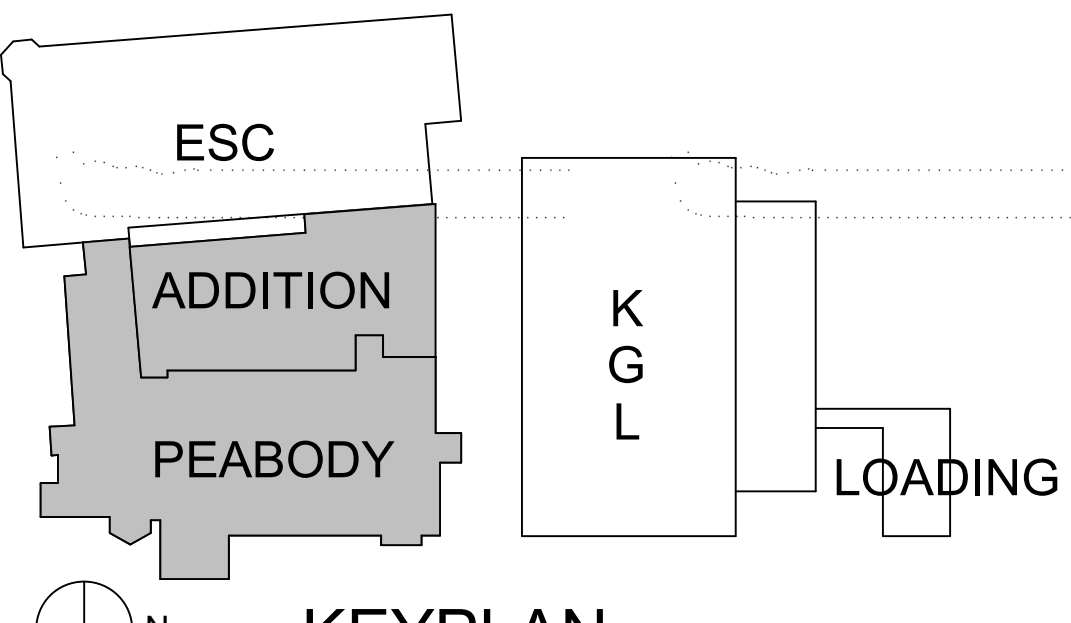


C12 1ST FLOOR REFLECTED CEILING PLAN - ESC CORRIDOR
1/8" = 1'-0"

CEILING LEGEND	
	ACB-1 2' x 4' ACOUSTIC BOARD
	ACP-1 2' x 6' ACP LAY-IN CEILING
	ACP-2 2' x 4' ACP LAY-IN CEILING
	ACP-3 2' x 2' ACP LAY-IN CEILING
	ACP-4 1' x 2' (MT) ACP LAY-IN CEILING
	APP-1 ACOUSTIC PLASTER PANEL
	DFS-1 DIRECT APPLIED FINISH SYSTEM
	FRP-1 4' x 8' FIBER REINFORCED PANEL
	GWB-1 GWB CEILING
	GWB-2 GWB SPRING ISOLATION CEILING, AWP-3
	GWB-3 GWB 1 HOUR RATED CEILING
	GWB-4 GWB 2 HOUR RATED CEILING
	GVP-1 GYPSUM VENEER PLASTER
	MSP-1 METAL SOFFIT PANEL
	WGC-1 TYPICAL WOOD GRILLE CEILING
	WGC-2 CUSTOM WOOD GRILLE CEILING
	AREA OUTSIDE SCOPE OF WORK
RCP NOTES	
SEE A8 SERIES CEILING FINISH PLANS FOR GENERAL NOTES	
SEE A8 SERIES BASIS OF DESIGN FOR SHADES AND OTHER PRODUCT INFORMATION	
DEVICE LEGEND	
	ABUSE RESISTANT LINEAR PENDANT
	INDIRECT/DIRECT LINEAR PENDANT
	DIRECT LINEAR PENDANT
	COLLECTIONS DIRECT LINEAR PENDANT
	UNDER CABINET TASK FIXTURE
	GALLERY TRACK
	LINEAR PERIMETER COVE
	1X4' TROFFER LIGHT
	WALL MOUNTED LINEAR INDIRECT
	EGRESS STAIR
	WALL MOUNTED DOWNLIGHT
	EMERGENCY ELEC. CLOSET
	WALL MOUNTED DOWNLIGHT
	LARGE FORMAT RECESSED DOWNLIGHT
	RECESSED DOWNLIGHT
	RECESSED WALL WASHER
	PENDANT DOWN LIGHT
	PENDANT 1
	PENDANT 2
	LINEAR DIFFUSER / RETURN
	CLG ACCESS DOOR
	CLG CONTROL JOINT
	CLG REVEAL
	POWER REEL
	RETRACTABLE DATA
	SPEAKER
	MICROPHONE
	PROJECTOR
	FIRE SPRINKLER
	SMOKE DETECTOR
	FIRE ALARM STROBE
	LIGHTING OCCUP SENSOR
	SEC. MOTION DETECTOR
	SEC. CAMERA
	SEC. GLASS BREAK SENSOR



M1 1ST FLOOR REFLECTED CEILING PLAN - PEABODY
1/8" = 1'-0"

Yale University

Central Campus

Office of Facilities
2 Whitney Avenue
New Haven, CT 06520

Acoustic & Audio Visual Consultant
CAVANAUGH TOCCI ASSOCIATES Inc.

Building Envelope Consultant
LEAVITT ASSOCIATES Inc.

Civil Engineer
LANGAN ENGINEERING

Code Consultant
PHILIP R. SHERMAN, P.E.

Elevator Consultant
STERLING ELEVATOR CONSULTANTS, LLC

Door Hardware Consultant
ARKASPEC, Inc.

Irrigation Consultant
NORTHERN DESIGNS LLC

Landscape Architects
JAMES CORNER FIELD OPERATIONS

Lighting Designer
CRBLD Inc.

Signage Consultant
STRONG COHEN LLC

Site Steam Engineer
RMF ENGINEERING Inc.

Specification Writer
KALIN ASSOCIATES Inc.

Structural Engineer
GILZANZ MURRAY STEPIECK LLP

Mechanical, Electrical, Plumbing, Fire Protection, Fire Alarm, IT & Security Engineers
ARUP

CENTERBROOK

Architects and Planners, LLP

67 Main Street
Post Office Box 955
Centerbrook, Connecticut 06409-0955

Telephone 860.767.0175
Facsimile 860.767.8719

BID DOCUMENTS

PROJECT NAME
Yale Peabody Museum Comprehensive Renovation

BUILDING NAME & ADDRESS
YALE PEABODY MUSEUM
150 WHITNEY AVENUE, NEW HAVEN, CT

PROJECT NUMBER
17101902

DRAWING TITLE
1ST FLOOR REFLECTED CEILING PLAN - PEABODY

SCALE
1/8" = 1'-0"

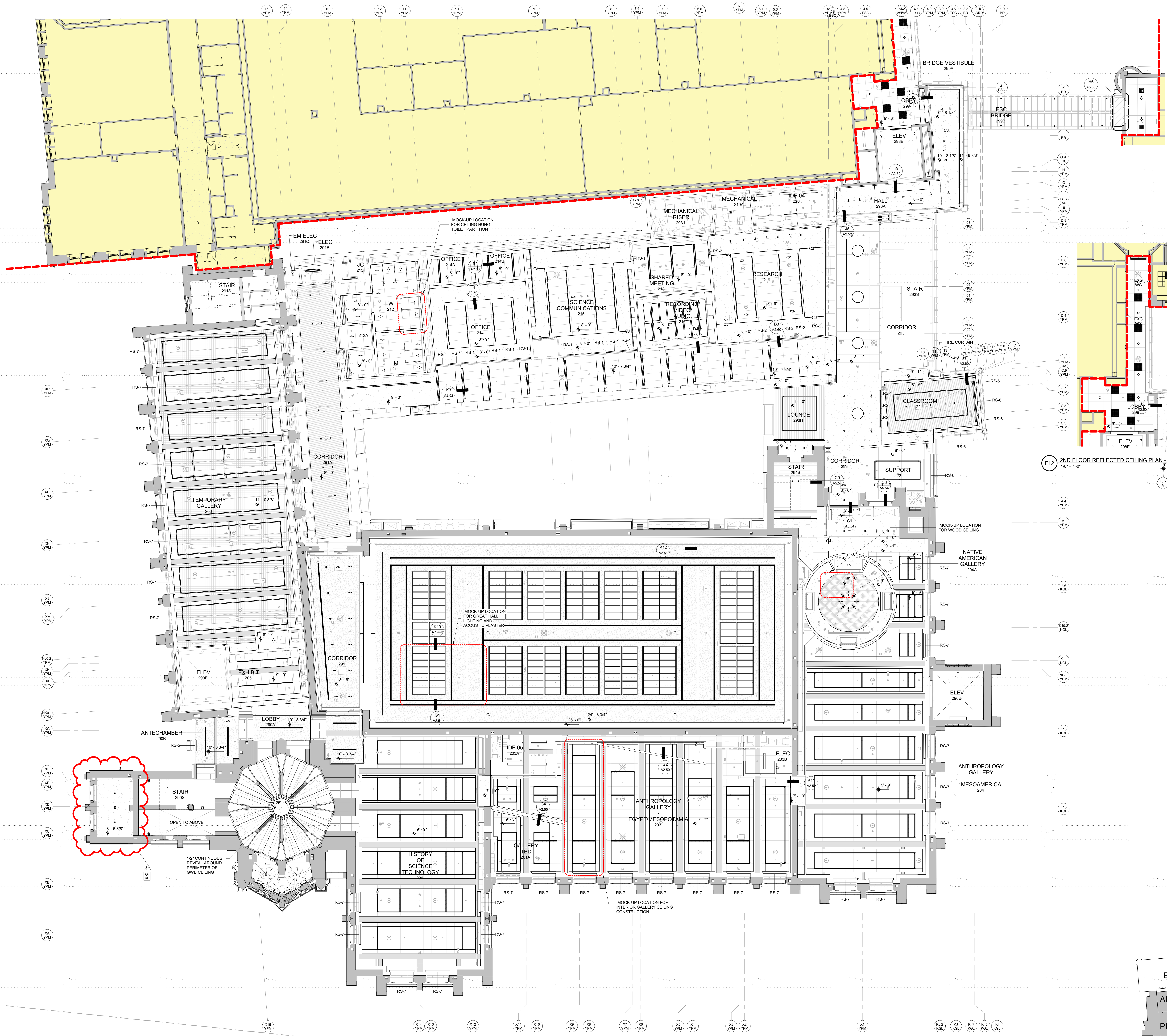
CAD FILENAME
17101902_A2.11

DRAWING NUMBER
A2.11

DRAWN BY
A.W.

DATE
6/12/2020

1710202.2 23.02.20
Centerbrook Associates, Inc.
1710202.2 23.02.20



Yale University

Central Campus

Office of Facilities
2 Whitney Avenue
New Haven, CT 06520

Acoustic & Audio Visual Consultant
CAVANAUGH TOCCI ASSOCIATES Inc.

Building Envelope Consultant
LEAVITT ASSOCIATES Inc.

Civil Engineer
LANGAN ENGINEERING

Code Consultant
PHILIP R. SHERMAN, P.E.

Elevator Consultant
STERLING ELEVATOR CONSULTANTS, LLC

Door Hardware Consultant
ARKASPEC, Inc.

Irrigation Consultant
NORTHERN DESIGNS LLC

Landscape Architects
JAMES CORNER FIELD OPERATIONS

Lighting Designer
CBBLD Inc.

Signage Consultant
STRONG COHEN LLC

Site Steam Engineer
RMF ENGINEERING Inc.

Specification Writer
KALIN ASSOCIATES Inc.

Structural Engineer
GILZANZ MURRAY STEPIEC LLP

Mechanical, Electrical, Plumbing, Fire Protection, Fire Alarm, IT & Security Engineers
ARUP

CENTERBROOK

Architects and Planners, LLP

67 Main Street
Post Office Box 955
Centerbrook, Connecticut 06409-0955

Telephone 860.767.0175
Facsimile 860.767.8719

BID DOCUMENTS

PROJECT NAME
Yale Peabody Museum Comprehensive Renovation

BUILDING NAME & ADDRESS
YALE PEABODY MUSEUM
150 WHITNEY AVENUE, NEW HAVEN, CT

PROJECT NUMBER
17101902

DRAWING TITLE
2ND FLOOR REFLECTED CEILING PLAN - PEABODY

SCALE
1/8" = 1'-0"

CAD FILE NAME
17101902 A2.21

DRAWN BY
A.W.

DATE
6/12/2020

DRAWING NUMBER
A2.21

CEILING LEGEND

- AB-1 2' x 4' ACOUSTIC BOARD
- ACP-1 2' x 6' ACP LAY-IN CEILING
- ACP-2 2' x 4' ACP LAY-IN CEILING
- ACP-3 2' x 2' ACP LAY-IN CEILING
- ACP-4 1' x 2' (MT) ACP LAY-IN CEILING
- APP-1 ACOUSTIC PLASTER PANEL
- DPS-1 DIRECT-APPLIED FINISH SYSTEM
- FRP-1 4' x 8' FIBER REINFORCED PANEL
- GWB-1 GWB CEILING
- GWB-2 GWB SPRING ISOLATION CEILING, AWP-3
- GWB-3 GWB 1 HOUR RATED CEILING
- GWB-4 GWB 2 HOUR RATED CEILING
- GVP-1 GYPSUM VENEER PLASTER
- MSP-1 METAL SOFFIT PANEL
- WGC-1 TYPICAL WOOD GRILLE CEILING
- WGC-2 CUSTOM WOOD GRILLE CEILING
- AREA OUTSIDE SCOPE OF WORK

RCP NOTES

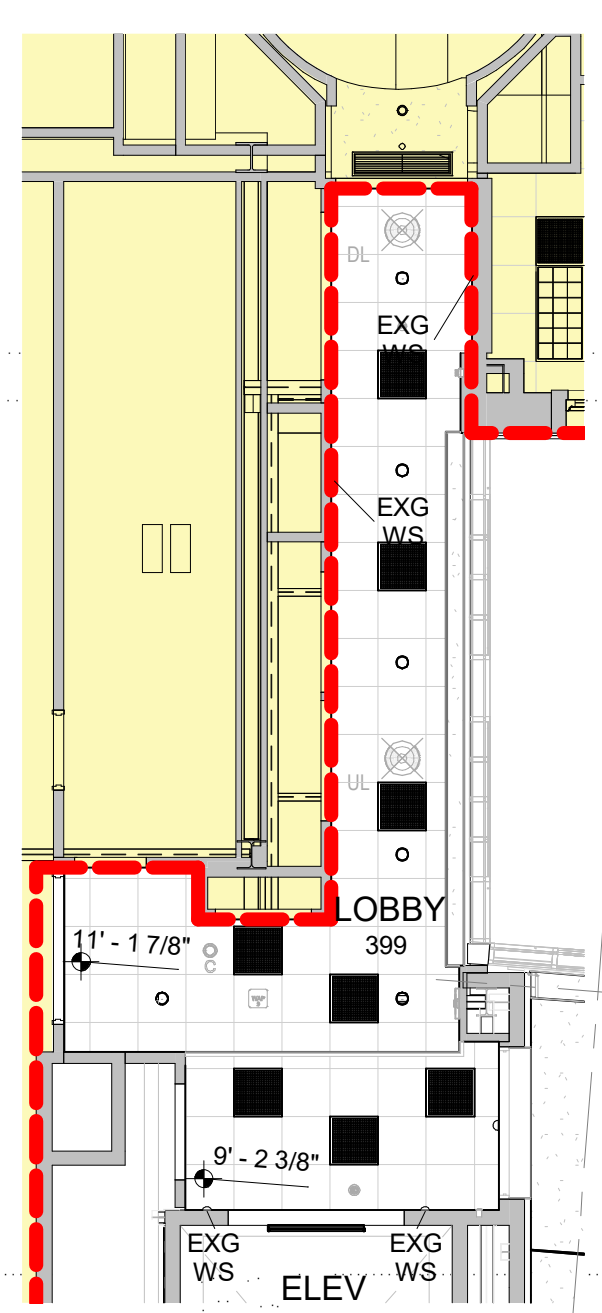
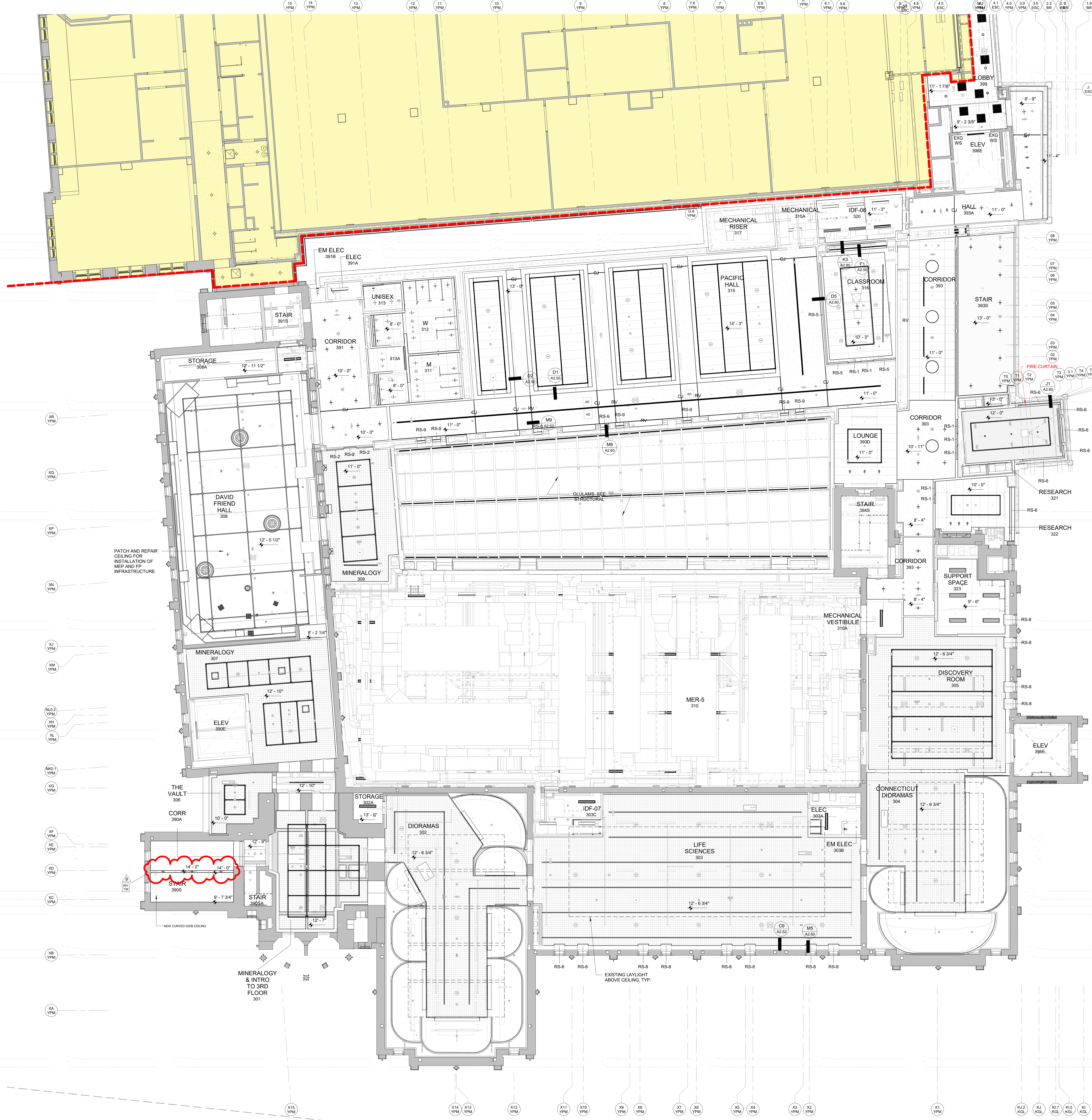
SEE A8 SERIES CEILING FINISH PLANS FOR GENERAL NOTES

SEE A8 SERIES BASIS OF DESIGN FOR SHADE AND OTHER PRODUCT INFORMATION

DEVICE LEGEND

- ABUSE RESISTANT LINEAR PENDANT
- INDIRECT/DIRECT LINEAR PENDANT
- INDIRECT/DIRECT LINEAR PENDANT
- DIRECT LINEAR PENDANT
- COLLECTIONS DIRECT LINEAR PENDANT
- UNDER CABINET TASK FIXTURE
- GALLERY TRACK
- LINEAR PERIMETER COVE
- 1X4 TROFFER LIGHT
- WALL MOUNTED LINEAR INDIRECT
- EGRESS STAIR WALL MOUNTED DOWNLIGHT
- EMERGENCY ELEC. CLOSET WALL MOUNTED DOWNLIGHT
- LARGE FORMAT RECESSED DOWNLIGHT
- RECESSED DOWNLIGHT
- RECESSED WALL WASHER
- PENDANT DOWN LIGHT
- PENDANT 1
- PENDANT 2
- LINEAR DIFFUSER / RETURN
- CLG ACCESS DOOR
- CLG CONTROL JOINT
- CLG REVEAL
- POWER REEL
- RETRACTABLE DATA
- SPEAKER
- MICROPHONE
- PROJECTOR
- FIRE SPRINKLER
- SMOKE DETECTOR
- FIRE ALARM STROBE
- LIGHTING OCCUP SENSOR
- SEC. MOTION DETECTOR
- SEC. CAMERA
- SEC. GLASS BREAK SENSOR

M1 2ND FLOOR REFLECTED CEILING PLAN - PEABODY
1/8" = 1'-0"



C12 3RD FLOOR REFLECTED CEILING PLAN - ESC CORRIDOR
1/8" = 1'-0"

- CEILING LEGEND**
- AB-1 2' x 4' ACOUSTIC BOARD
 - ACP-1 2' x 6' ACP LAY-IN CEILING
 - ACP-2 2' x 4' ACP LAY-IN CEILING
 - ACP-3 2' x 2' ACP LAY-IN CEILING
 - ACP-4 1' x 2' (MT) ACP LAY-IN CEILING
 - APP-1 ACOUSTIC PLASTER PANEL
 - DPS-1 DIRECT-APPLIED FINISH SYSTEM
 - FRP-1 4' x 8' FIBER REINFORCED PANEL
 - GWB-1 GWS CEILING
 - GWB-2 GWS SPRING ISOLATION CEILING, AWP-3
 - GWB-3 GWS 1 HOUR RATED CEILING
 - GWB-4 GWS 2 HOUR RATED CEILING
 - GVP-1 GYPSUM VENEER PLASTER
 - MSP-1 METAL SOFFIT PANEL
 - WGC-1 TYPICAL WOOD GRILLE CEILING
 - WGC-2 CUSTOM WOOD GRILLE CEILING
 - AREA OUTSIDE SCOPE OF WORK
- RCP NOTES**
- SEE A8 SERIES CEILING FINISH PLANS FOR GENERAL NOTES
SEE A8 SERIES BASIS OF DESIGN FOR SHADE AND OTHER PRODUCT INFORMATION
- DEVICE LEGEND**
- ABUSE RESISTANT LINEAR PENDANT
 - INDIRECT/DIRECT LINEAR PENDANT
 - INDIRECT/DIRECT LINEAR PENDANT
 - DIRECT LINEAR PENDANT
 - COLLECTIONS DIRECT LINEAR PENDANT
 - UNDER CABINET TASK FIXTURE
 - GALLERY TRACK
 - LINEAR PERIMETER COVE
 - 1'x4' TROFFER LIGHT
 - WALL MOUNTED LINEAR INDIRECT
 - EGRESS STAIR WALL MOUNTED DOWNLIGHT
 - EMERGENCY ELEC. CLOSET WALL MOUNTED DOWNLIGHT
 - LARGE FORMAT RECESSED DOWNLIGHT
 - RECESSED DOWNLIGHT
 - RECESSED WALL WASHER
 - PENDANT DOWN LIGHT
 - PENDANT 1
 - PENDANT 2
 - LINEAR DIFFUSER / RETURN
 - CLG ACCESS DOOR
 - CLG CONTROL JOINT
 - CLG REVEAL
 - POWER REEL
 - RETRACTABLE DATA
 - SPEAKER
 - MICROPHONE
 - PROJECTOR
 - FIRE SPRINKLER
 - SMOKE DETECTOR
 - FIRE ALARM STROBE
 - LIGHTING OCCUP SENSOR
 - SEC. MOTION DETECTOR
 - SEC. CAMERA
 - SEC. GLASS BREAK SENSOR

Yale University

Central Campus

Office of Facilities
2 Whitney Avenue
New Haven, CT 06520

Acoustic & Audio Visual Consultant
CAVANAUGH TOCCI ASSOCIATES Inc.

Building Envelope Consultant
LEAVITT ASSOCIATES Inc.

Civil Engineer
LANGAN ENGINEERING

Code Consultant
PHILIP R. SHERMAN, P.E.

Elevator Consultant
STERLING ELEVATOR CONSULTANTS, LLC

Door Hardware Consultant
ARKASPECs, Inc.

Irrigation Consultant
NORTHERN DESIGNS LLC

Landscape Architects
JAMES CORNER FIELD OPERATIONS

Lighting Designer
CBBLD Inc.

Signage Consultant
STRONG COHEN LLC

Site Steam Engineer
RMF ENGINEERING Inc.

Specification Writer
KALIN ASSOCIATES Inc.

Structural Engineer
GILZANZ MURRAY STEPIECK LLP

Mechanical, Electrical, Plumbing, Fire Protection, Fire Alarm, IT & Security Engineers
ARUP

CENTERBROOK

Architects and Planners, LLP

67 Main Street
Post Office Box 955
Centerbrook, Connecticut 06409-0955

Telephone 860.767.0175
Facsimile 860.767.8719

BID DOCUMENTS

PROJECT NAME
Yale Peabody Museum Comprehensive Renovation

BUILDING NAME & ADDRESS
YALE PEABODY MUSEUM
150 WHITNEY AVENUE, NEW HAVEN, CT

PROJECT NUMBER
17101902

DRAWING TITLE
3RD FLOOR REFLECTED CEILING PLAN - PEABODY

SCALE
1/8" = 1'-0"

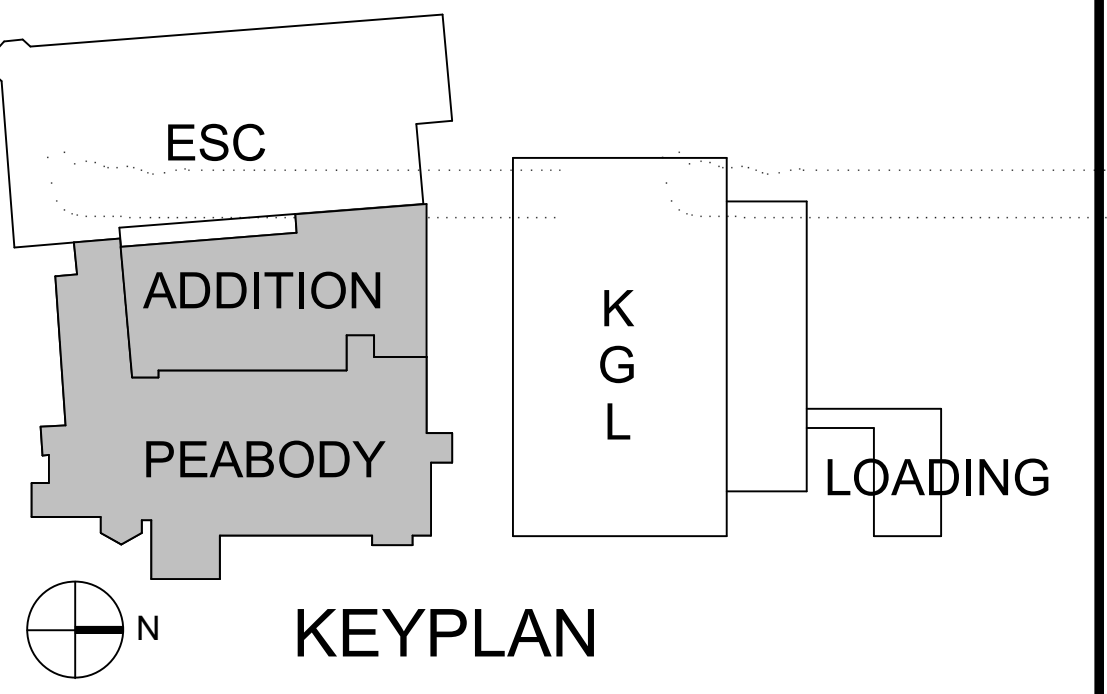
CAD FILE NAME
17101902 A2.31

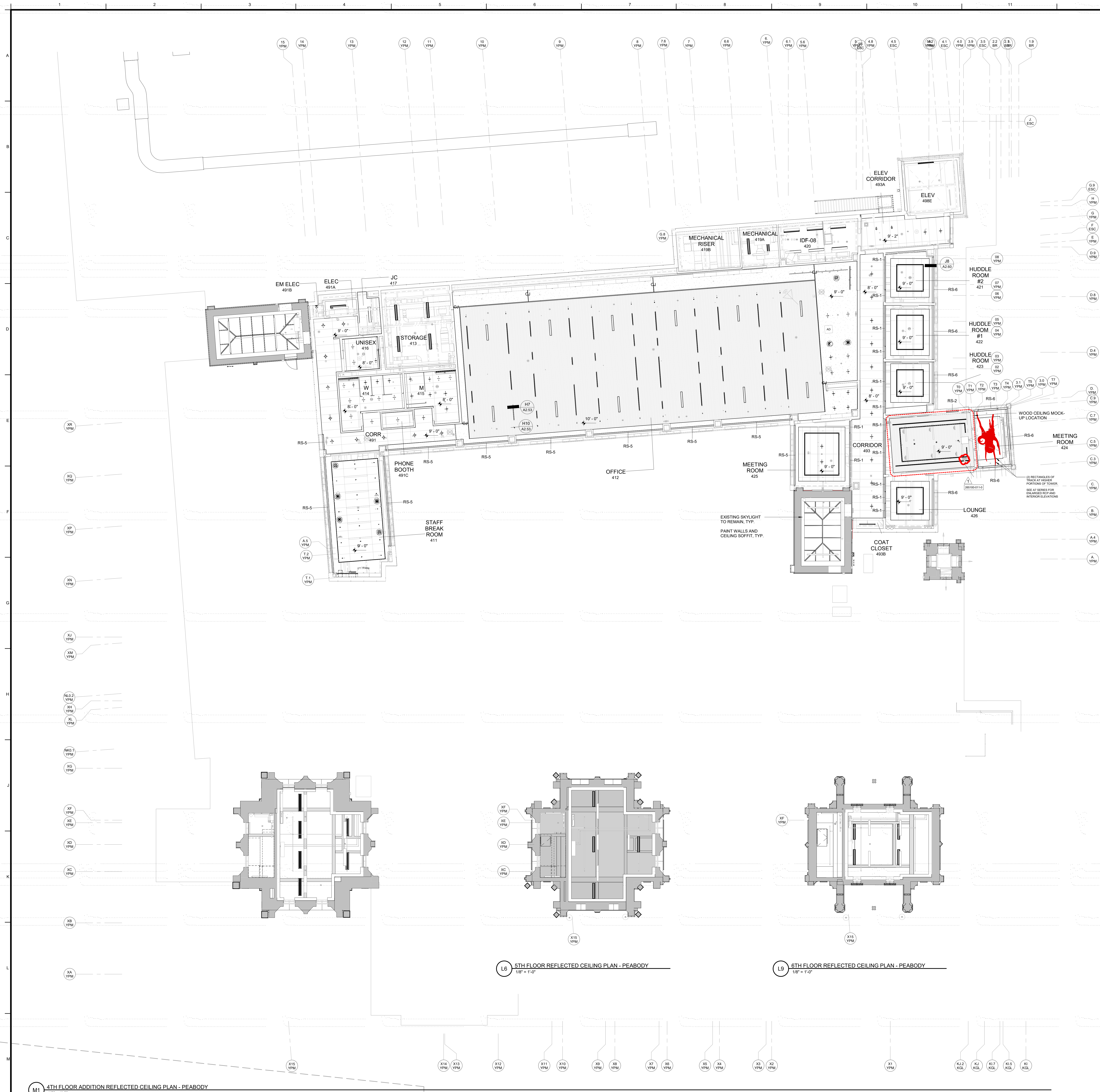
DRAWN BY
A.W.

DATE
6/12/2020

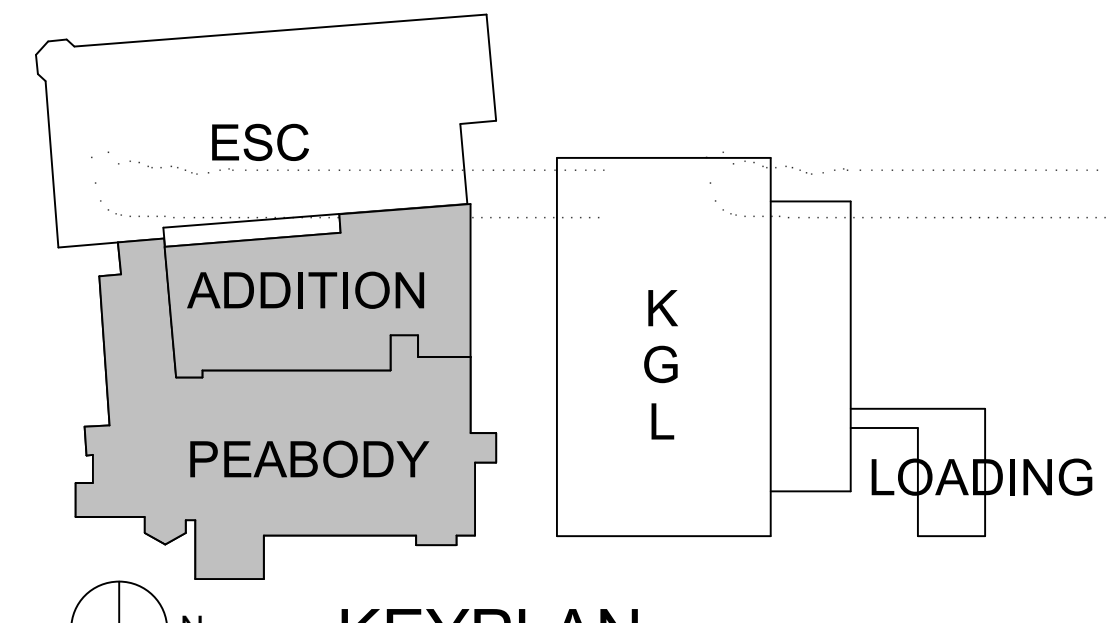
DRAWING NUMBER
A2.31

M1 3RD FLOOR REFLECTED CEILING PLAN - PEABODY
1/8" = 1'-0"





CEILING LEGEND	
	AB-1 2' x 4' ACPUSTIC BOARD
	ACP-1 2' x 6' ACP LAY-IN CEILING
	ACP-2 2' x 4' ACP LAY-IN CEILING
	ACP-3 2' x 2' ACP LAY-IN CEILING
	ACP-4 1' x 2' (MTO) ACP LAY-IN CEILING
	APP-1 ACOUSTIC PLASTER PANEL
	DFS-1 DIRECT-APPLIED FINISH SYSTEM
	FRP-1 4' x 8' FIBER REINFORCED PANEL
	GWB-1 GWB CEILING
	GWB-2 GWB SPRING ISOLATION CEILING, AWP-3
	GWB-3 GWB 1 HOUR RATED CEILING
	GWB-4 GWB 2 HOUR RATED CEILING
	GVP-1 GYPSUM VENEER PLASTER
	MSP-1 METAL SOFFIT PANEL
	WGC-1 TYPICAL WOOD GRILLE CEILING
	WGC-2 CUSTOM WOOD GRILLE CEILING
	AREA OUTSIDE SCOPE OF WORK
RCP NOTES	
SEE A8 SERIES CEILING FINISH PLANS FOR GENERAL NOTES	
SEE A8 SERIES BASIS OF DESIGN FOR SHADE AND OTHER PRODUCT INFORMATION	
DEVICE LEGEND	
	ABUSE RESISTANT LINEAR PENDANT
	INDIRECT/DIRECT LINEAR PENDANT
	DIRECT LINEAR PENDANT
	COLLECTIONS DIRECT LINEAR PENDANT
	UNDER CABINET TASK FIXTURE
	GALLERY TRACK
	LINEAR PERIMETER COVE
	1'x4' TROFFER LIGHT
	WALL MOUNTED LINEAR INDIRECT
	EGRESS STAIR
	WALL MOUNTED DOWNLIGHT
	EMERGENCY ELEC. CLOSET
	WALL MOUNTED DOWNLIGHT
	LARGE FORMAT RECESSED DOWNLIGHT
	RECESSED DOWNLIGHT
	RECESSED WALL WASHER
	PENDANT DOWN LIGHT
	PENDANT 1
	PENDANT 2
	LINEAR DIFFUSER / RETURN
	CLG ACCESS DOOR
	CLG CONTROL JOINT
	CLG REVEAL
	POWER REEL
	RETRACTABLE DATA
	SPEAKER
	MICROPHONE
	PROJECTOR
	FIRE SPRINKLER
	SMOKE DETECTOR
	FIRE ALARM STROBE
	LIGHTING OCCUP SENSOR
	SEC. MOTION DETECTOR
	SEC. CAMERA
	SEC. GLASS BREAK SENSOR



Yale University

Central Campus

Office of Facilities
2 Whitney Avenue
New Haven, CT 06520

Acoustic & Audio Visual Consultant
CAVANAUGH TOCCI ASSOCIATES Inc.

Building Envelope Consultant
LEAVITT ASSOCIATES Inc.

Civil Engineer
LANGAN ENGINEERING

Code Consultant
PHILIP R. SHERMAN, P.E.

Elevator Consultant
STERLING ELEVATOR CONSULTANTS, LLC

Door Hardware Consultant
ARKASPECs, Inc.

Irrigation Consultant
NORTHERN DESIGNS LLC

Landscape Architects
JAMES CORNER FIELD OPERATIONS

Lighting Designer
CBLD Inc.

Signage Consultant
STRONG COHEN LLC

Site Steam Engineer
RMF ENGINEERING Inc.

Specification Writer
KALIN ASSOCIATES Inc.

Structural Engineer
GILZANZ MURRAY STEPICEK LLP

Mechanical, Electrical, Plumbing, Fire Protection, Fire Alarm, IT & Security Engineers
ARUP

CENTERBROOK

Architects and Planners, LLP

67 Main Street
Post Office Box 955
Centerbrook, Connecticut 06409-0955

Telephone 860.767.0175
Facsimile 860.767.8719

1	11/05/2021	BULLETIN 87	REVISION
NO.	DATE		

BID DOCUMENTS

PROJECT NAME
Yale Peabody Museum Comprehensive Renovation

BUILDING NAME & ADDRESS
YALE PEABODY MUSEUM
150 WHITNEY AVENUE, NEW HAVEN, CT

PROJECT NUMBER
17101902

DRAWING TITLE
4TH FLOOR REFLECTED CEILING PLAN - PEABODY

SCALE
1/8" = 1'-0"

DRAWN BY
A.W.

CAD FILENAME
17101902 A2.41

DATE
6/12/2020

DRAWING NUMBER
A2.41

11

114

A2.50



Office of Facilities
2 Whitney Avenue
New Haven, CT 06520

CENTERBROOK

NO.	DATE	REVISION
ISSUE/REVISION		

SCALE	DRAWN BY
6" = 1'-0"	A.W.
CAD FILENAME	DATE
17101902 A2.51	6/12/2021

A2.51



Office of Facilities
2 Whitney Avenue
New Haven, CT 06520

CENTERBROOK

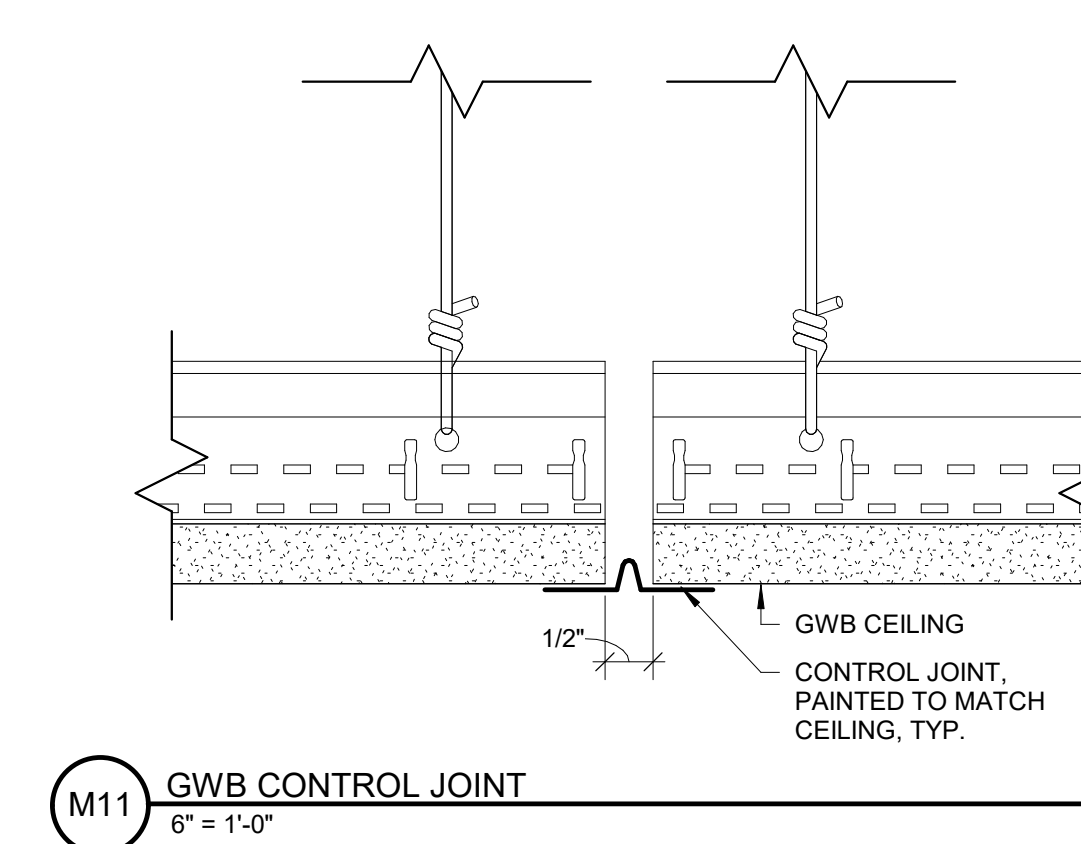
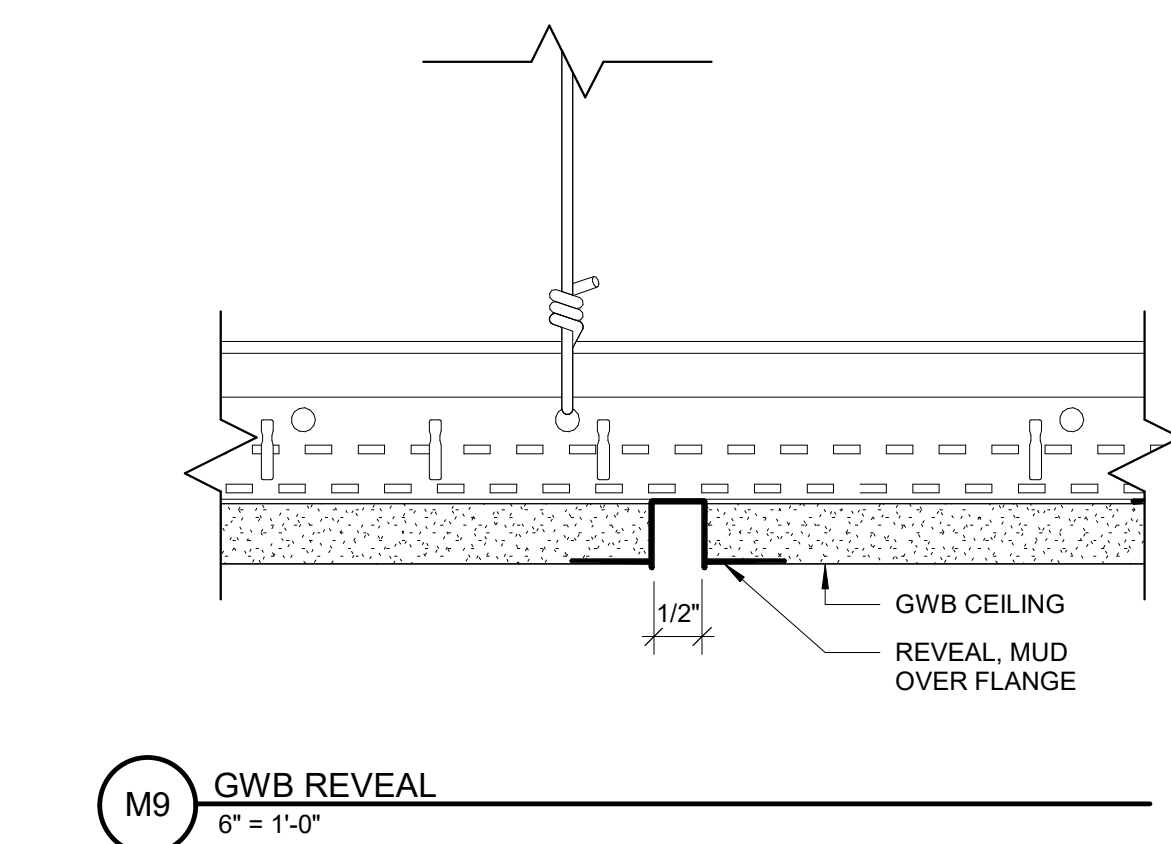
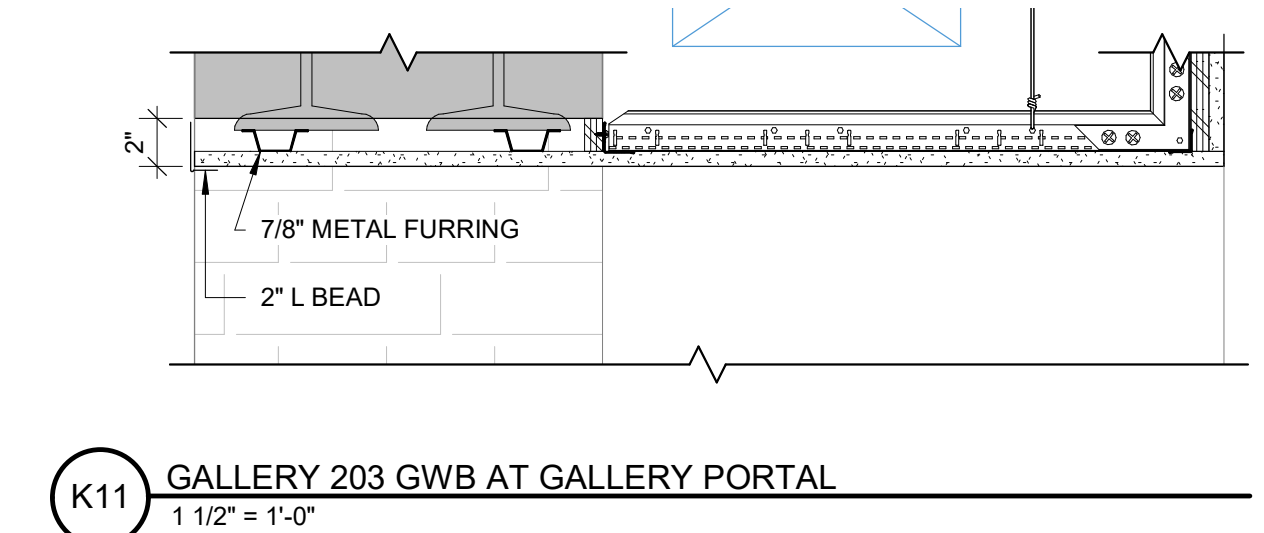
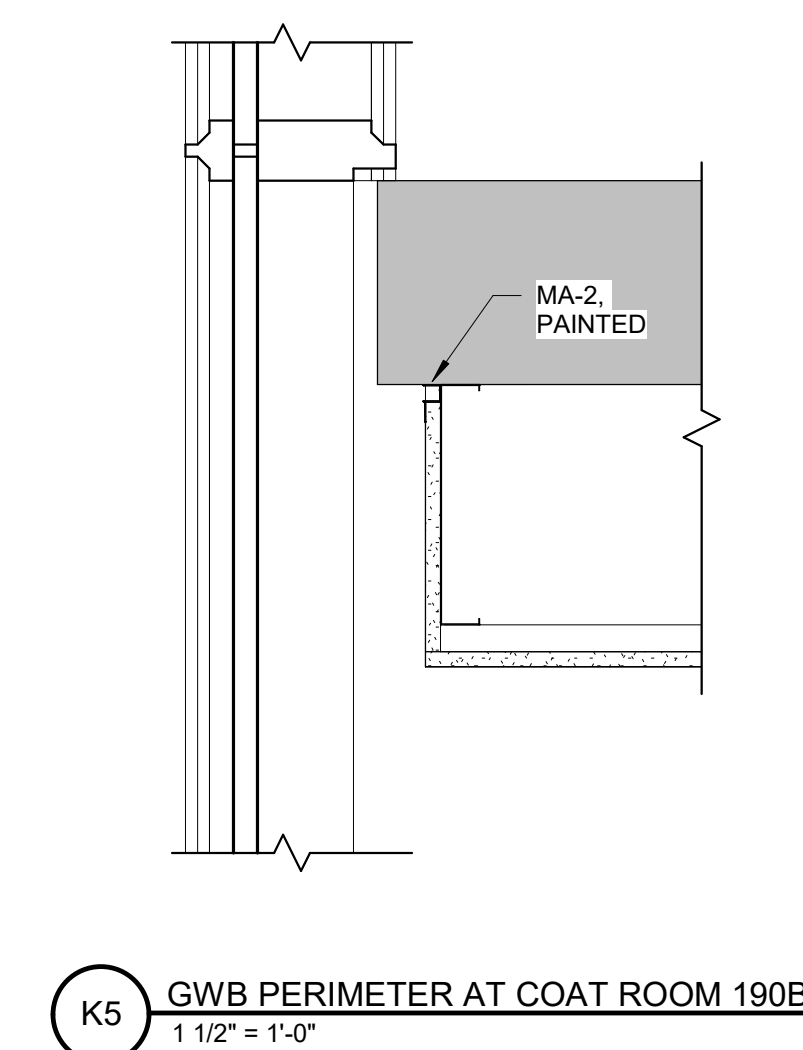
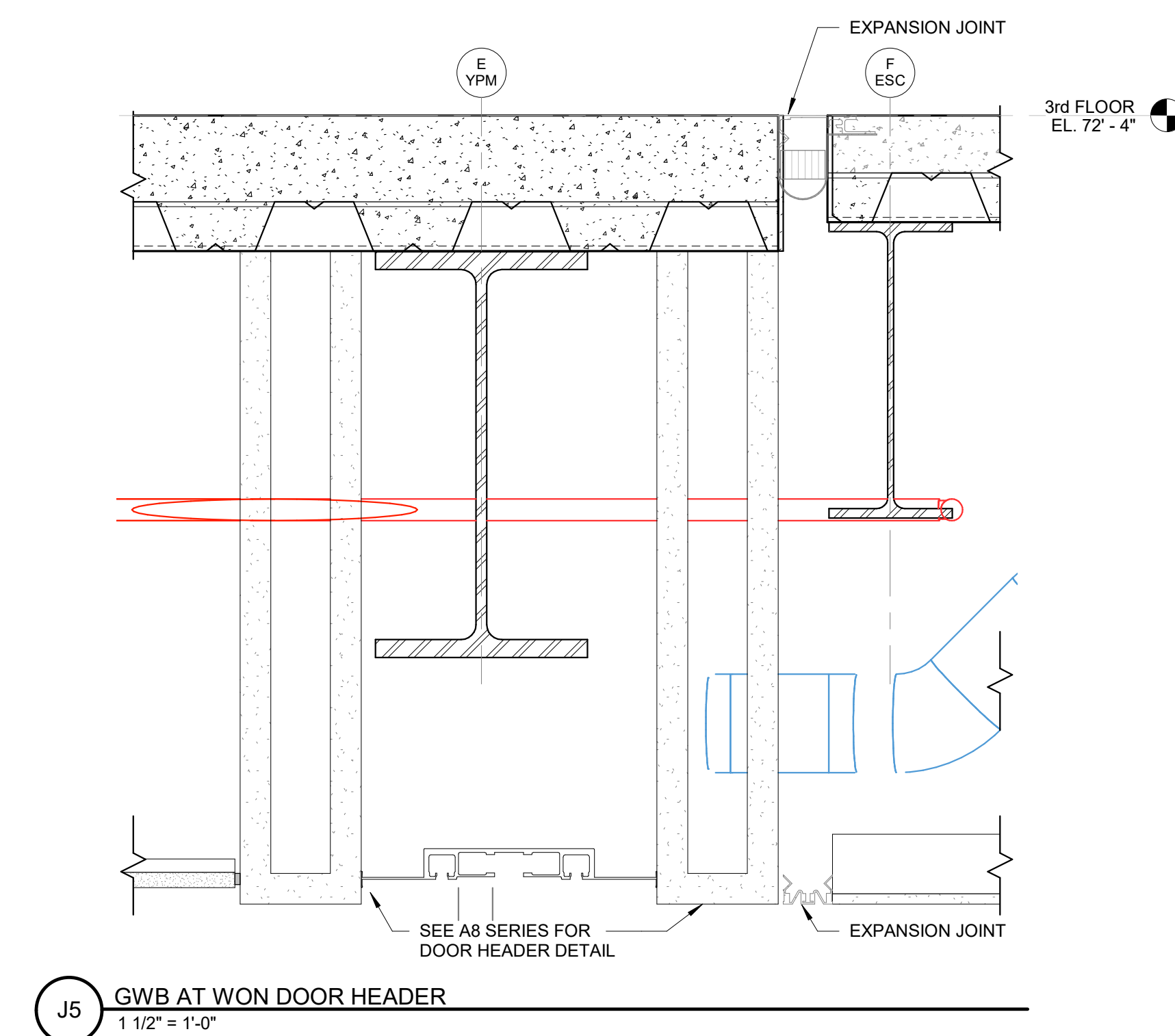
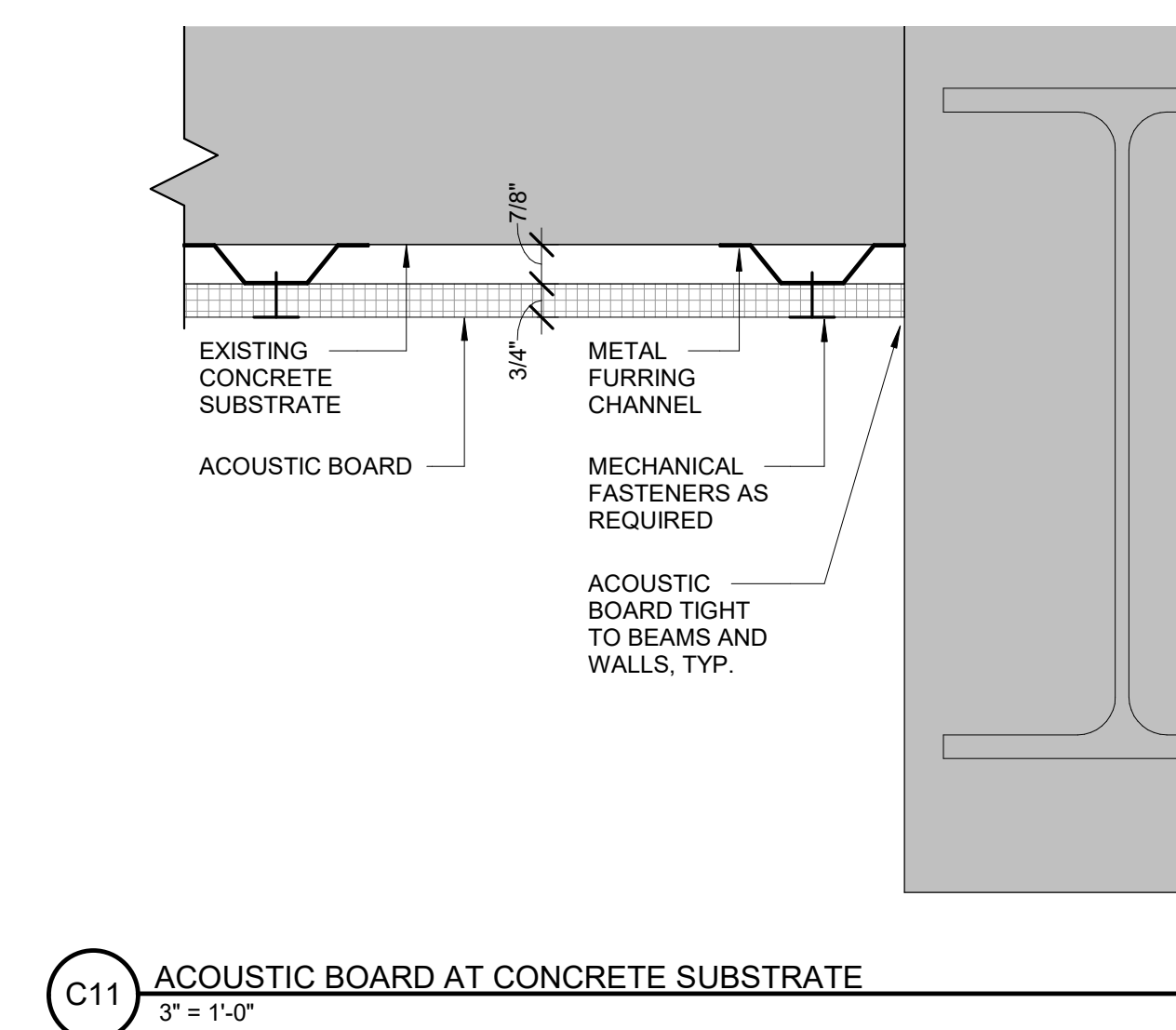
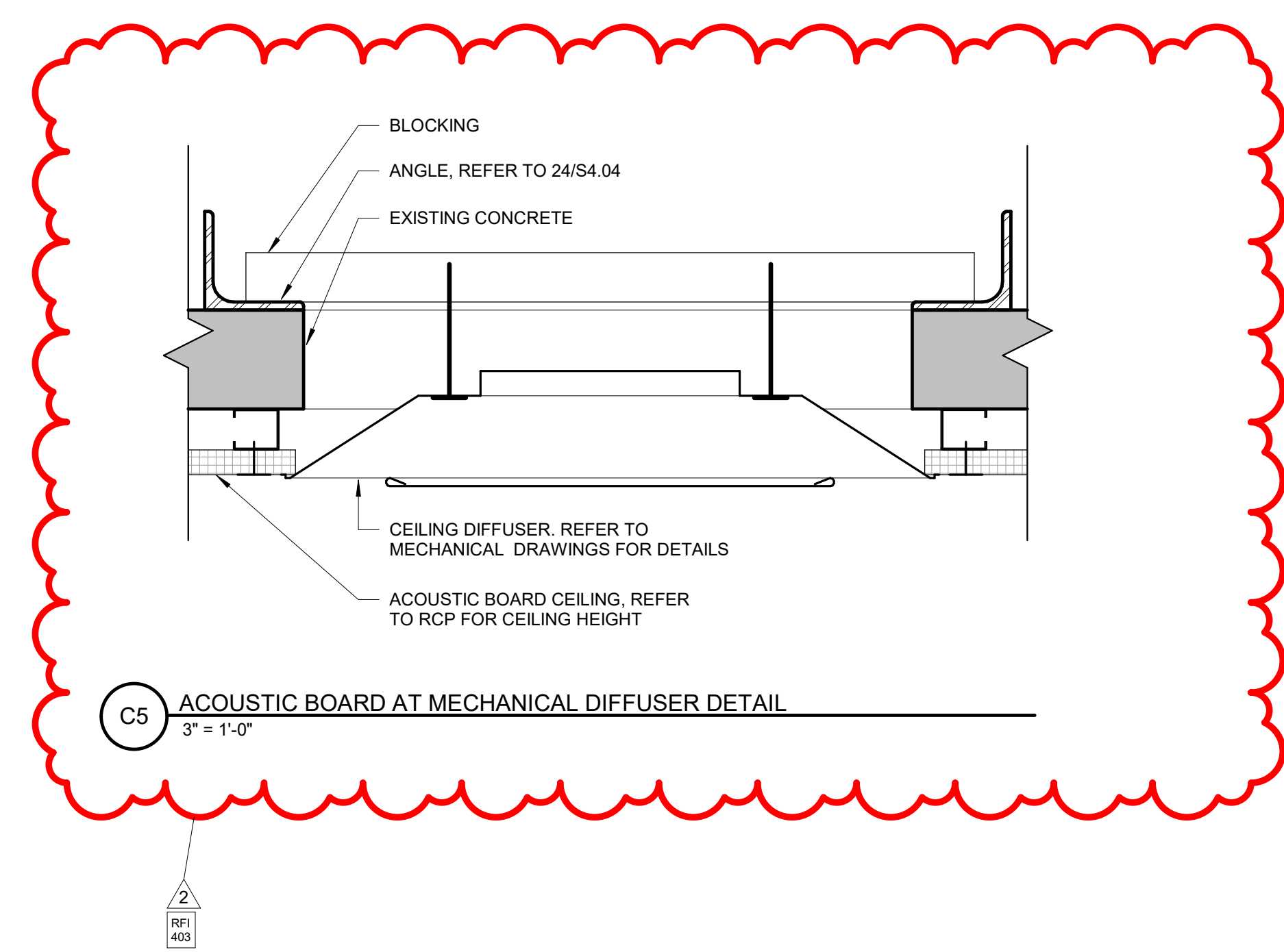
2	6/11/2021	BULLETIN #58
1	5/7/2021	BULLETIN #47
NO.	DATE	REVISION
ISSUE/REVISION		

PROJECT NAME
Yale Peabody Museum
Comprehensive
Renovation

DRAWING TITLE

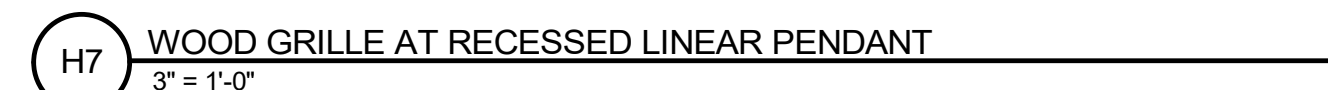
CEILING DETAILS - GWB

A2.52



Office of Facilities
2 Whitney Avenue
New Haven, CT 06520

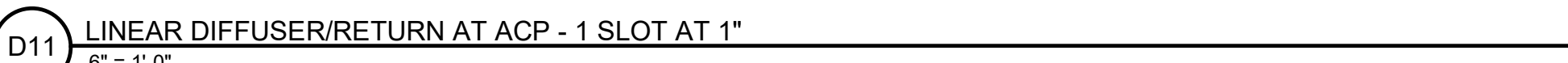
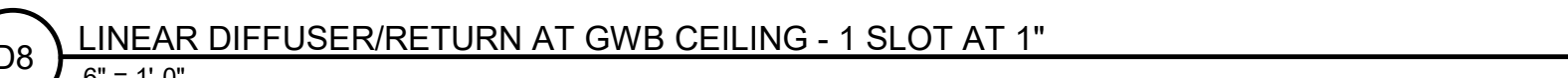
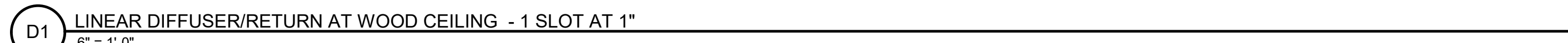
CENTERBROOK



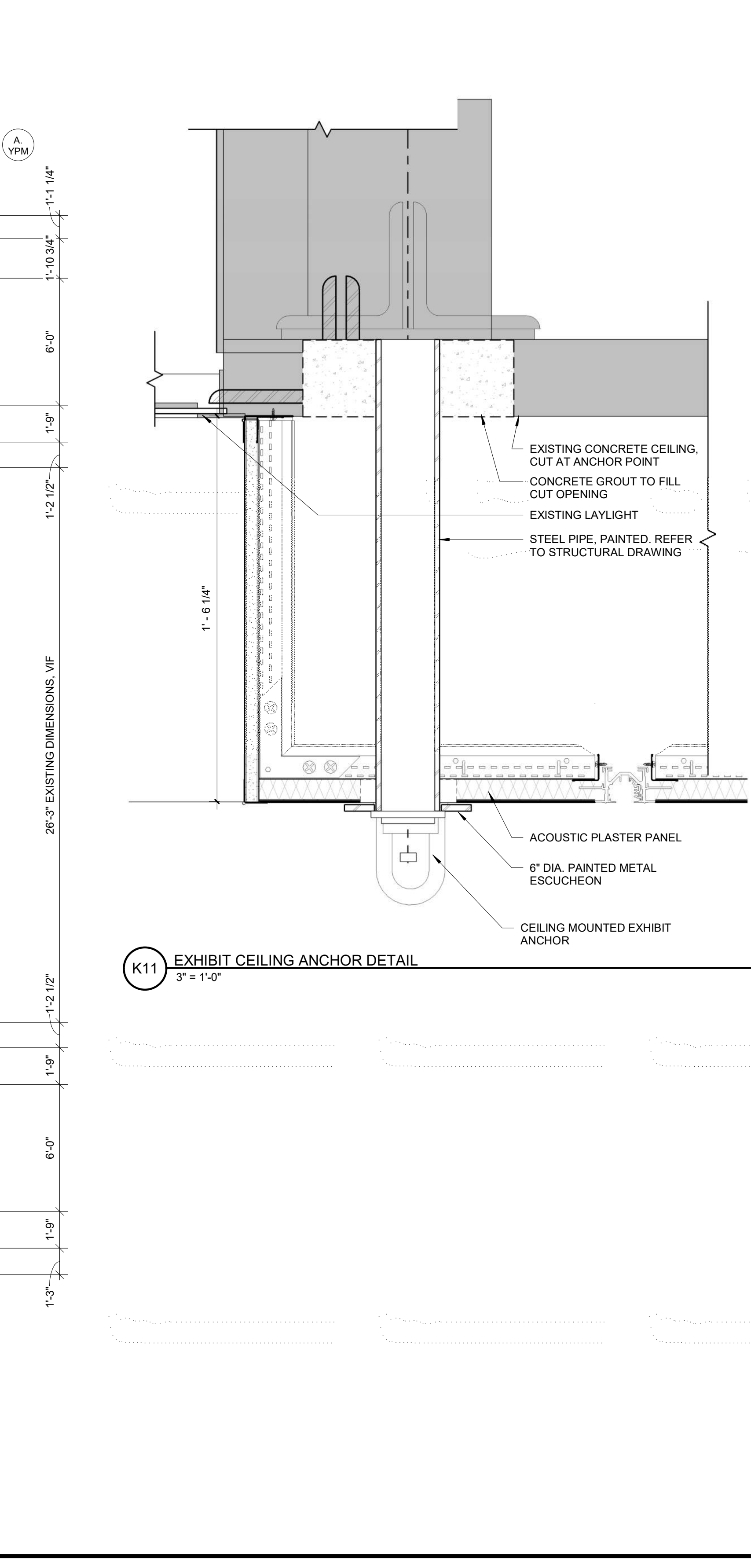
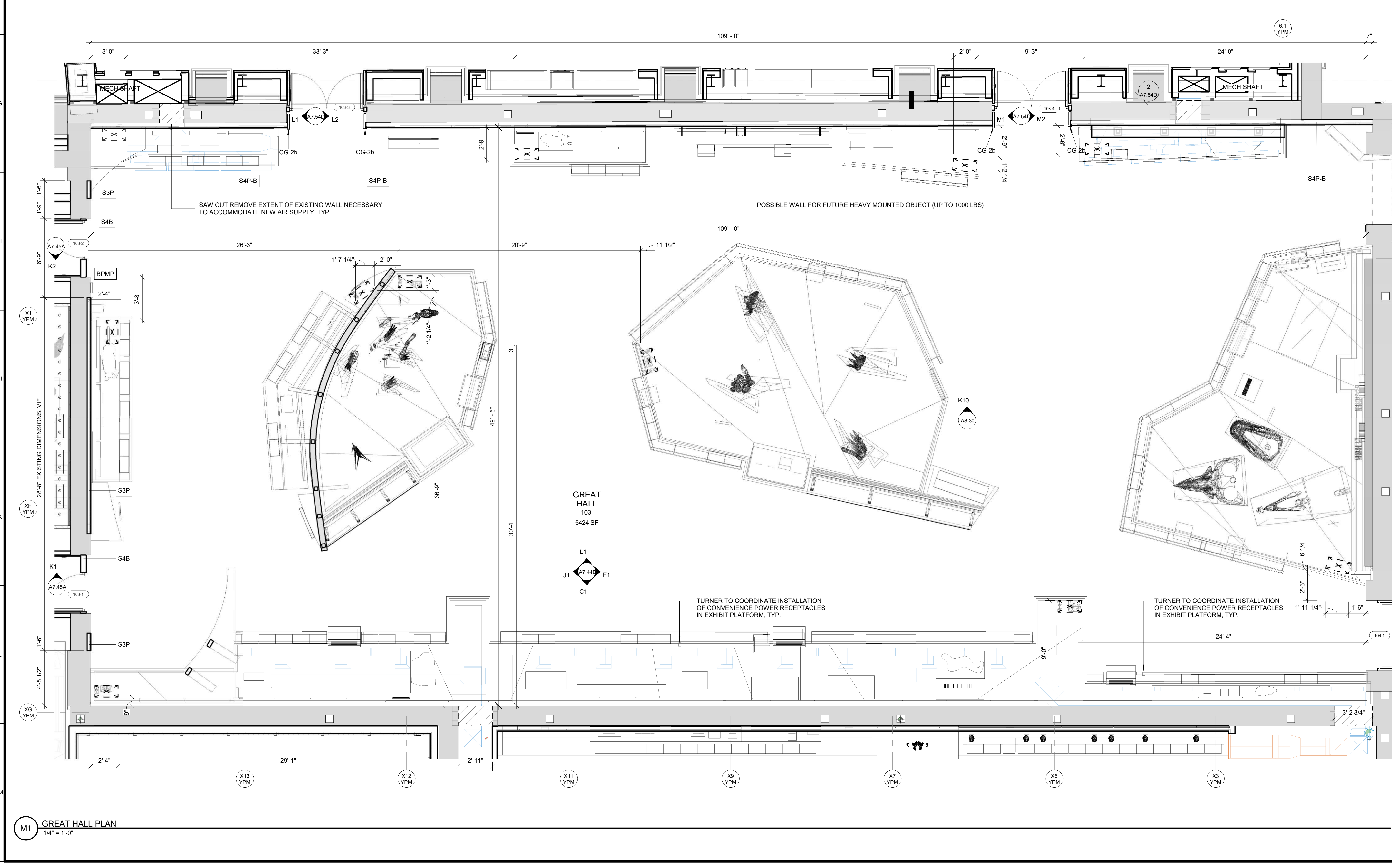
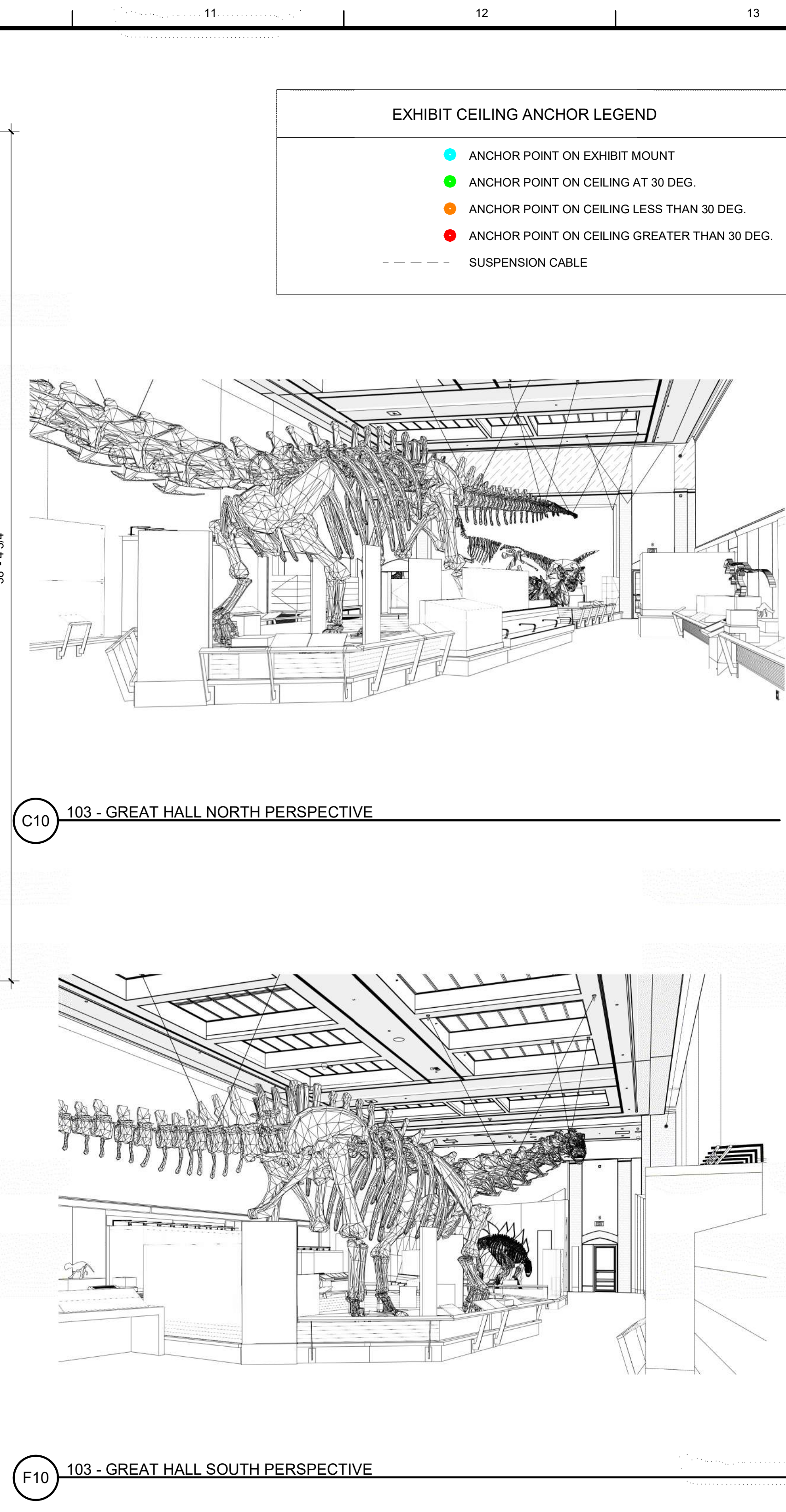
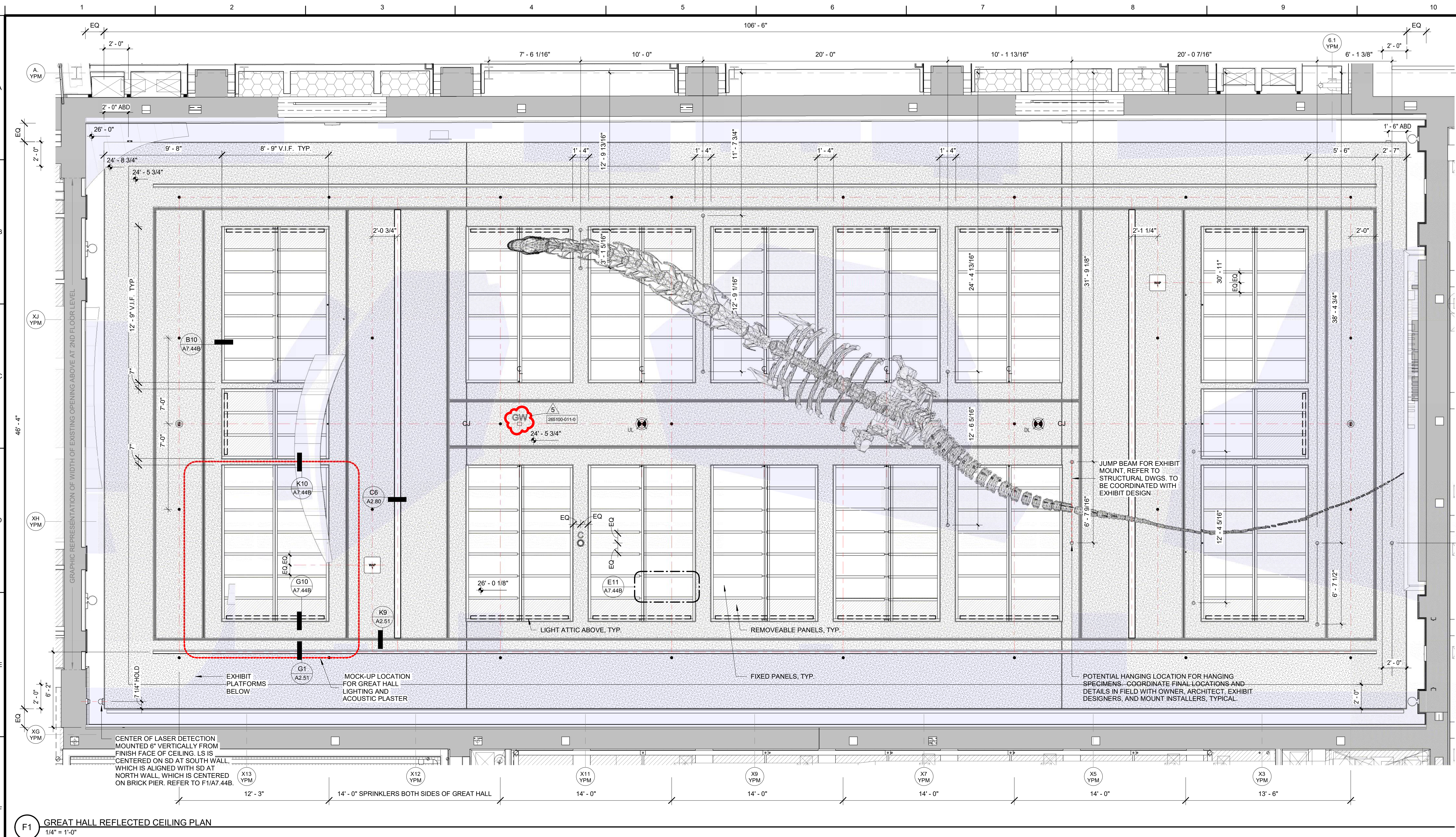
BID DOCUMENTS

A2.53

Office of Facilities
2 Whitney Avenue
New Haven, CT 06520

[illegible]

A27



GENERAL NOTES - ENLARGED PLANS, ENLARGED REFLECTED CEILING PLANS, INTERIOR ELEVATIONS

- REFER TO A800 SERIES DRAWINGS FOR CEILING AND FLOOR FINISH INFORMATION AND GENERAL NOTES
- REFER TO A200 SERIES DRAWINGS FOR RCP LEGEND
- REFER TO A800 SERIES FOR INTERIOR GLAZING DETAILS AND SCHEDULE
- REFER TO A800 SERIES FOR CASEWORK MENU, SCHEDULE AND NAMING CONVENTION
- WALL FINISH PAINTED, UNLESS NOTED OTHERWISE, TYPICAL
- REFER TO TYPICAL DEVICE MOUNTING HEIGHT DIAGRAM AT 30 TO LOCATE ELECTRICAL WALL DEVICES UNLESS NOTED OTHERWISE, TYPICAL
- OVERALL ROOM DIMENSIONS ON ENLARGED PLANS ARE MEASURED TO FACE OF FINISH
- SPOT ELEVATIONS IN EITHER ESC OR KGL ARE BASED ON LEVELS IN YPM

INTERIOR PLAN LEGEND

- EXISTING WALLS
- EXISTING DOORS
- NEW DOORS
- AREA BEYOND ARCHITECTURAL PROJECT SCOPE
- EXPANSION JOINT
- REFER 7 SERIES SHEET FOR ENLARGED PLANS
- PARTITION TYPE, REFER TO PARTITION SCHEDULE
- ACOUSTICALLY SENSITIVE PARTITION LOCATION

INTERIOR TAG LEGEND

ABBREVIATIONS

- MRC-1 INTERIOR MASONRY REPAIR & CLEANING
- MRC-2 CLEANING & REPAIR OF EXTERIOR MASONRY TO BECOME INTERIOR
- MRC-6 INTERIOR MASONRY DUSTPROOFER
- CSM-1 CAST STONE MASONRY
- MB-1 DIAMOND PLATE WAINSCOT
- CG-1 STAINLESS STEEL CORNER GUARD
- CG-2-4 CUSTOM PAINTED CORNER GUARD
- BPMP BRONZE PAINTED METAL PANEL
- MSR-2 STEEL STAR HANDRAIL GUARDRAIL
- MSR-5 METAL GRATE STAIRS
- DMR-1 INTERIOR GUARD RAILS, PAINTED BRONZE
- DMR-2 GLASS SUPPORTED RAILING
- DMR-3 GUARDRAILS WITH WOOD HANDRAILS
- DMR-4 STAINLESS STEEL ORNAMENTAL RAILINGS
- WT-1 WOOD TRIM, TRANSPARENT FINISH
- WT-2 WOOD TRIM, OPAQUE FINISH
- WB-1 WOOD BASE, OPAQUE FINISH
- WR-1 WOOD RAILING
- PLC PLASTIC LAMINATE COUNTERTOP*
- SSC SOLID SURFACE MATERIAL*
- SPC SOAP STONE BENCHTOP*
- PHC COMPOSITE LABORATORY WORK SURFACE
- WDC BUTCHERBLOCK*
- QZC QUARTZ AGGLOMERATE COUNTERTOP*
- SSC PLASTIC COUNTERTOP*
- ST METAL MANUFACTURED TABLE SYSTEM*
- WT WOOD MANUFACTURED TABLE SYSTEM*
- FLRS LABORATORY FURNITURE SYSTEM**
- WW WOOD LABORATORY CASEWORK WALL CABINET**
- WF WOOD LABORATORY CASEWORK FULL HEIGHT CABINET**
- WB WOOD LABORATORY CASEWORK BASE CABINET**
- WP WOOD LABORATORY CASEWORK END COVER PANEL**
- SW METAL LABORATORY CASEWORK WALL CABINET**
- SF METAL LABORATORY CASEWORK FULL HEIGHT CABINET**
- SB METAL LABORATORY CASEWORK BASE CABINET**
- SP METAL LABORATORY CASEWORK END COVER PANEL**
- AWL INTERIOR ARCHITECTURAL WOODWORK WALL CABINET**
- AF INTERIOR ARCHITECTURAL WOODWORK TALL CABINET**
- AB INTERIOR ARCHITECTURAL WOODWORK BASE CABINET**
- WL METAL LOCKER**
- WS WOOD SHELF**
- STS STAINLESS STEEL SHELF**
- PLS PLASTIC LAMINATE SHELF**
- ASB WOOD SHELF BRACKET**
- WH1 COAT HOOKS ON WOOD BACKPLATE**
- MRP-1 MARSH ROOM PANELING RESTORATION
- FRP-1 GLASS FIBER REINFORCED WALL PANELING
- ISF INTERIOR ALUMINUM STOREFRONT***
- FRG FIRE RATED STOREFRONT***
- ADP-1 SEAMLESS ACOUSTIC PLASTER SYSTEM
- PPT-1 GAUGED PORCELAIN PANEL
- PPT-2 GAUGED PORCELAIN FLOOR TILE
- PPT-3 THROUGH BODY PORCELAIN WALL TILE
- PPT-4 EXTERIOR TILE
- AWP-2 1 1/8" IMPACT RESISTANT TACKABLE WALL PANEL
- AWP-3 2 1/8" IMPACT RESISTANT TACKABLE WALL PANEL
- AWP-5 BUCKSKIN WRAPPED PANEL
- PNT PAINTED FINISH, REFER TO FINISH PLANS
- MKBD-1 DRY ERASE MAGNETIC WRITING SURFACE
- MKBD-2 ERASABLE MAGNETIC GLASS MARKER BOARD
- MP-1 MAGNETIC PLASTER SURFACE
- DR-1 HANGING DISPLAY SYSTEMS
- DR-2 HANGING DISPLAY SYSTEMS
- RMS SIGNAGE
- WMP WIRE MESH PARTITIONS
- OP-1 FOLDING PANEL PARTITIONS
- BR BUMPER RAIL
- AED AUTOMATIC EXTERNAL DEFIBRILLATOR
- FEC-1 RECESSED FIRE EXTINGUISHER CABINET
- FEC-2 SEMI-RECESSED FIRE EXTINGUISHER CABINET
- RS WINDOW SHADE, REFER TO A200 SERIES

BID DOCUMENTS

PROJECT NAME

Yale Peabody Museum Comprehensive Renovation

BUILDING NAME & ADDRESS

YALE PEABODY MUSEUM
150 WHITNEY AVENUE, NEW HAVEN, CT

PROJECT NUMBER

17101902

DRAWING TITLE

GREAT HALL 103 - ENLARGED PLANS

SCALE

As Indicated

DRAWN BY

JCH - AWW

CAD FILENAME

17101902_A7.44A

DATE

6/12/2020

DRAWING NUMBER

A7.44A

GENERAL NOTES - ENLARGED PLANS, ENLARGED REFLECTED CEILING PLANS, INTERIOR ELEVATIONS

- REFER TO A800 SERIES DRAWINGS FOR CEILING AND FLOOR FINISH INFORMATION AND GENERAL NOTES
- REFER TO A200 SERIES DRAWINGS FOR RCP LEGEND
- REFER TO A800 SERIES FOR INTERIOR GLAZING DETAILS AND SCHEDULE
- REFER TO A800 SERIES FOR CASEWORK MENU, SCHEDULE AND NAMING CONVENTION
- WALL FINISH PAINTED, UNLESS NOTED OTHERWISE, TYPICAL
- REFER TO TYPICAL DEVICE MOUNTING HEIGHT DIAGRAM AT 30 TO LOCATE ELECTRICAL WALL DEVICES UNLESS NOTED OTHERWISE, TYPICAL
- OVERALL ROOM DIMENSIONS ON ENLARGED PLANS ARE MEASURED TO FACE OF FINISH
- SPOT ELEVATIONS IN EITHER ESC OR KGL ARE BASED ON LEVELS IN YPM

INTERIOR PLAN LEGEND

- EXISTING WALLS
- EXISTING DOORS
- NEW DOORS
- AREA BEYOND ARCHITECTURAL PROJECT SCOPE
- EXPANSION JOINT
- REFER 7 SERIES SHEET FOR ENLARGED PLANS
- PARTITION TYPE, REFER TO PARTITION SCHEDULE
- ACOUSTICALLY SENSITIVE PARTITION LOCATION

INTERIOR TAG LEGEND

ABBREVIATIONS

- MRC-1 INTERIOR MASONRY REPAIR & CLEANING
- MRC-2 CLEANING & REPAIR OF EXTERIOR MASONRY TO BECOME INTERIOR
- MRC-6 INTERIOR MASONRY DUSTPROOFER
- CSM-1 CAST STONE MASONRY
- MB-1 DIAMOND PLATE WAINSCOT
- CG-1 STAINLESS STEEL CORNER GUARD
- CG-2-4 CUSTOM PAINTED CORNER GUARD
- BPMP BRONZE PAINTED METAL PANEL
- MSR-2 STEEL STAR HANDRAIL GUARDRAIL
- MSR-5 METAL GRATE STAIRS
- DMR-1 INTERIOR GUARD RAILS, PAINTED BRONZE
- DMR-2 GLASS SUPPORTED RAILING
- DMR-3 GUARDRAILS WITH WOOD HANDRAILS
- DMR-4 STAINLESS STEEL ORNAMENTAL RAILINGS
- WT-1 WOOD TRIM, TRANSPARENT FINISH
- WT-2 WOOD TRIM, OPAQUE FINISH
- WB-1 WOOD BASE, OPAQUE FINISH
- WR-1 WOOD RAILING
- PLC PLASTIC LAMINATE COUNTERTOP*
- SSC SOLID SURFACE MATERIAL*
- SPC SOAP STONE BENCHTOP*
- PHC COMPOSITE LABORATORY WORK SURFACE
- WDC BUTCHERBLOCK*
- QZC QUARTZ AGGLOMERATE COUNTERTOP*
- SSC PLASTIC COUNTERTOP*
- ST METAL MANUFACTURED TABLE SYSTEM*
- WT WOOD MANUFACTURED TABLE SYSTEM*
- FLRS LABORATORY FURNITURE SYSTEM**
- WW WOOD LABORATORY CASEWORK WALL CABINET**
- WF WOOD LABORATORY CASEWORK FULL HEIGHT CABINET**
- WB WOOD LABORATORY CASEWORK BASE CABINET**
- WP WOOD LABORATORY CASEWORK END COVER PANEL**
- SW METAL LABORATORY CASEWORK WALL CABINET**
- SF METAL LABORATORY CASEWORK FULL HEIGHT CABINET**
- SB METAL LABORATORY CASEWORK BASE CABINET**
- SP METAL LABORATORY CASEWORK END COVER PANEL**
- AWL INTERIOR ARCHITECTURAL WOODWORK WALL CABINET**
- AF INTERIOR ARCHITECTURAL WOODWORK TALL CABINET**
- AB INTERIOR ARCHITECTURAL WOODWORK BASE CABINET**
- WL METAL LOCKER**
- WS WOOD SHELF**
- STS STAINLESS STEEL SHELF**
- PLS PLASTIC LAMINATE SHELF**
- ASB WOOD SHELF BRACKET**
- WH1 COAT HOOKS ON WOOD BACKPLATE**
- MRP-1 MARSH ROOM PANELING RESTORATION
- FRP-1 GLASS FIBER REINFORCED WALL PANELING
- ISF INTERIOR ALUMINUM STOREFRONT***
- FRG FIRE RATED STOREFRONT***
- ADP-1 SEAMLESS ACOUSTIC PLASTER SYSTEM
- PPT-1 GAUGED PORCELAIN PANEL
- PPT-2 GAUGED PORCELAIN FLOOR TILE
- PPT-3 THROUGH BODY PORCELAIN WALL TILE
- PPT-4 EXTERIOR TILE
- AWP-2 1 1/8" IMPACT RESISTANT TACKABLE WALL PANEL
- AWP-3 2 1/8" IMPACT RESISTANT TACKABLE WALL PANEL
- AWP-5 BUCKSKIN WRAPPED PANEL
- PNT PAINTED FINISH, REFER TO FINISH PLANS
- MKBD-1 DRY ERASE MAGNETIC WRITING SURFACE
- MKBD-2 ERASABLE MAGNETIC GLASS MARKER BOARD
- MP-1 MAGNETIC PLASTER SURFACE
- DR-1 HANGING DISPLAY SYSTEMS
- DR-2 HANGING DISPLAY SYSTEMS
- RMS SIGNAGE
- WMP WIRE MESH PARTITIONS
- OP-1 FOLDING PANEL PARTITIONS
- BR BUMPER RAIL
- AED AUTOMATIC EXTERNAL DEFIBRILLATOR
- FEC-1 RECESSED FIRE EXTINGUISHER CABINET
- FEC-2 SEMI-RECESSED FIRE EXTINGUISHER CABINET
- RS WINDOW SHADE, REFER TO A200 SERIES

BID DOCUMENTS

PROJECT NAME

Yale Peabody Museum Comprehensive Renovation

BUILDING NAME & ADDRESS

YALE PEABODY MUSEUM
150 WHITNEY AVENUE, NEW HAVEN, CT

PROJECT NUMBER

17101902

DRAWING TITLE

GREAT HALL 103 - ENLARGED PLANS

SCALE

As Indicated

DRAWN BY

JCH - AWW

CAD FILENAME

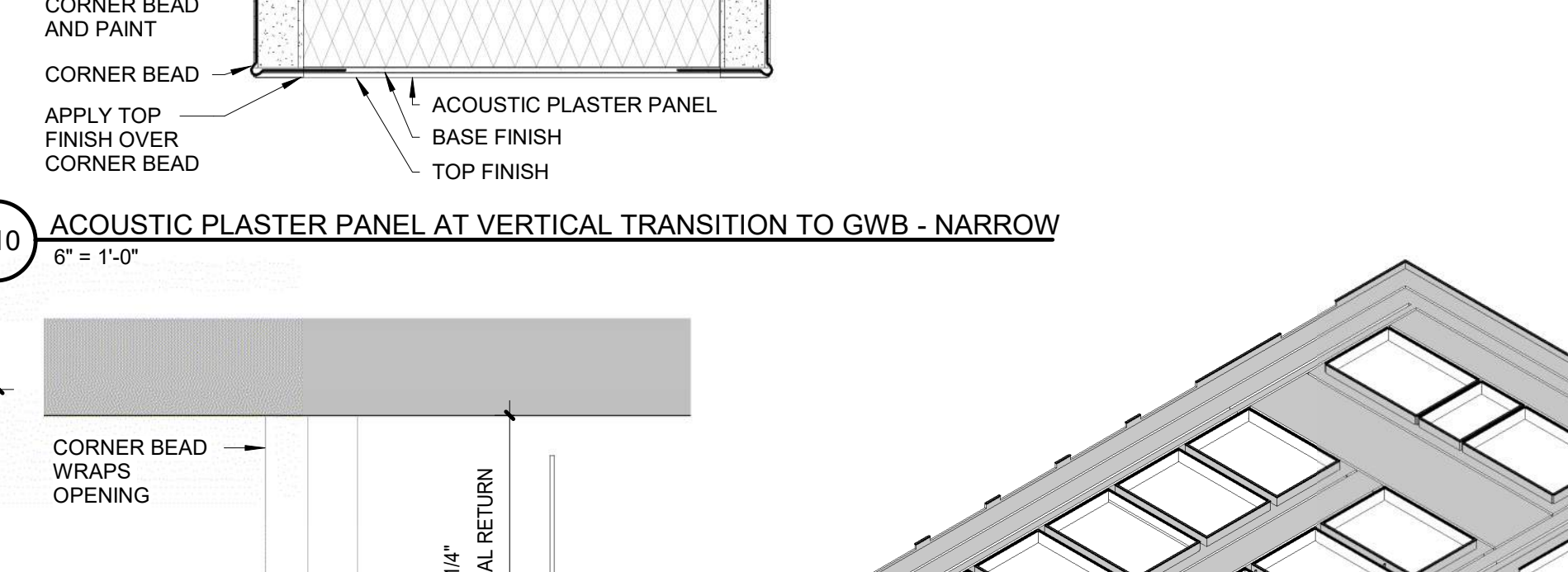
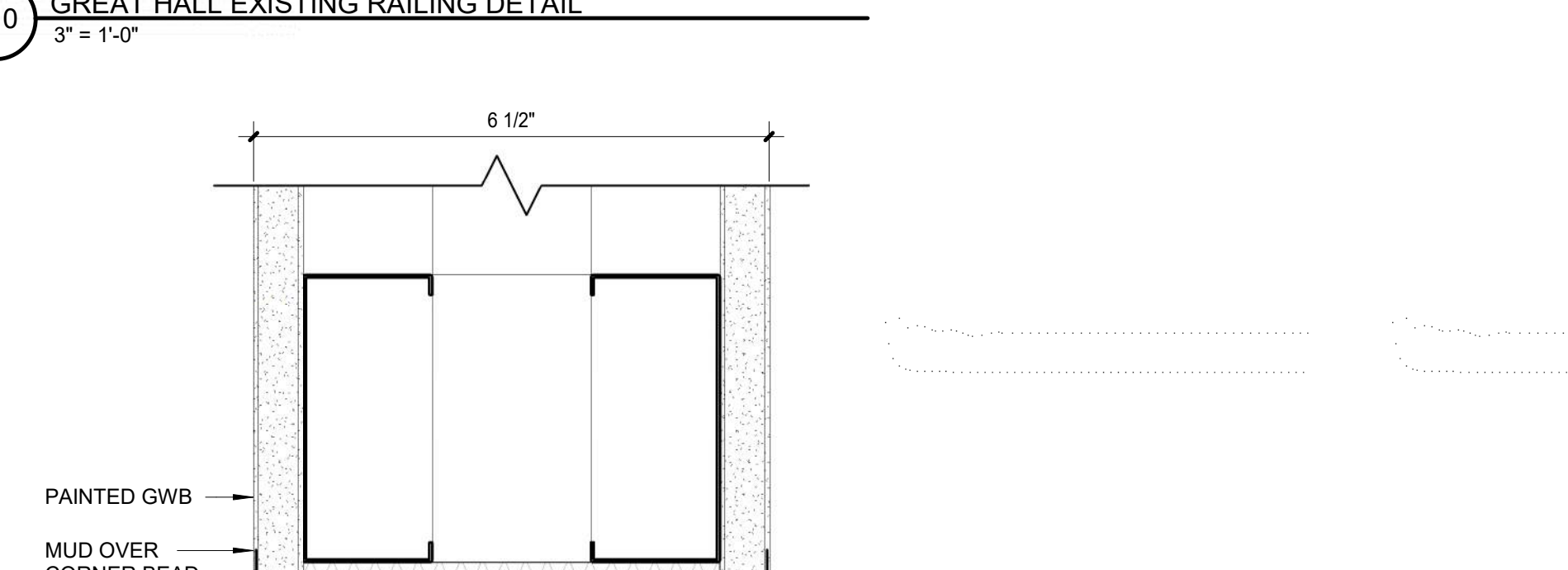
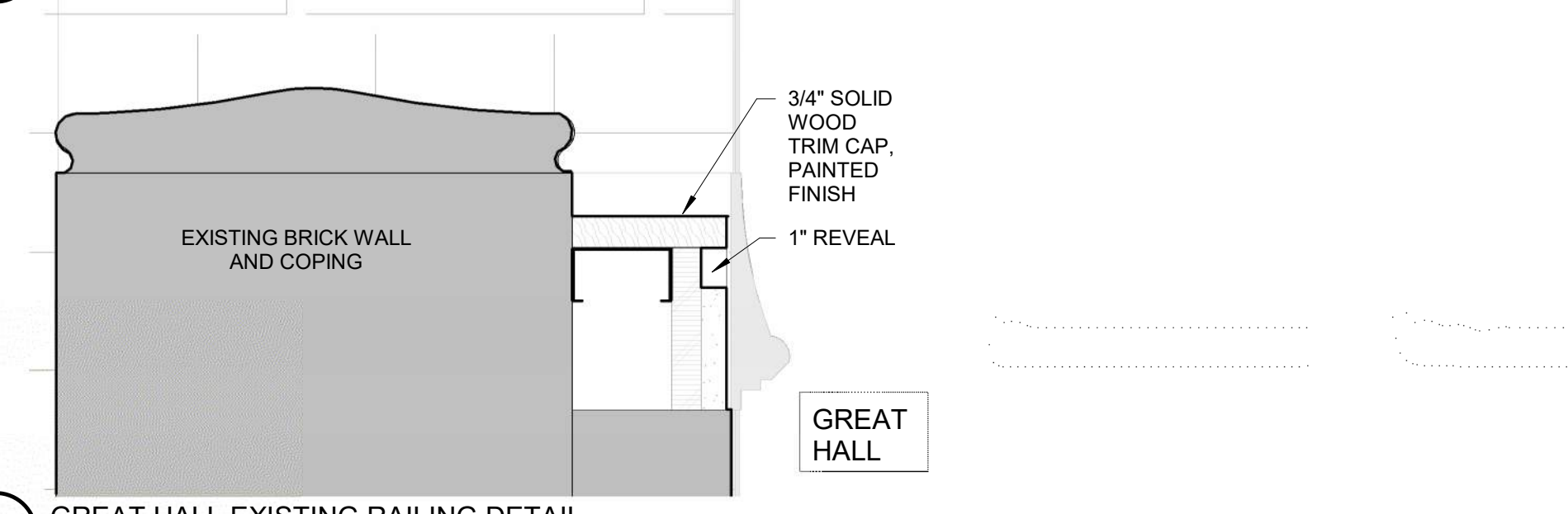
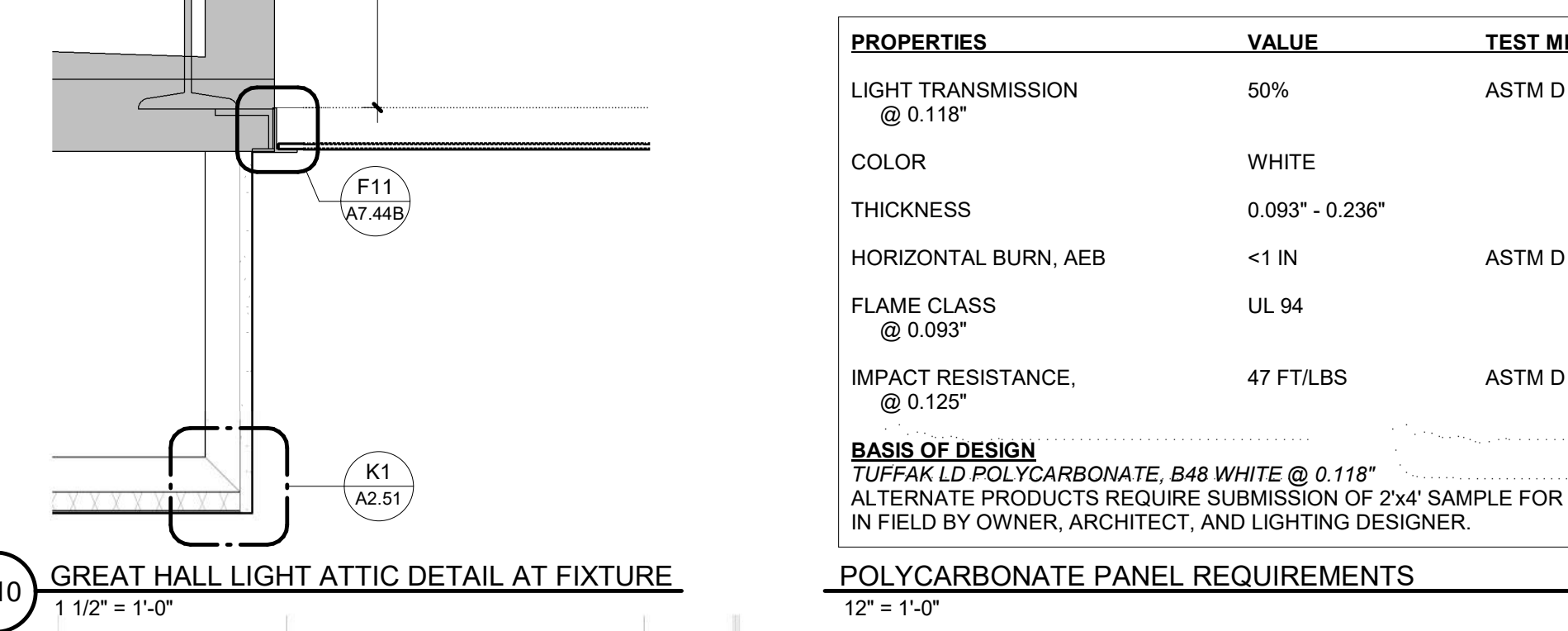
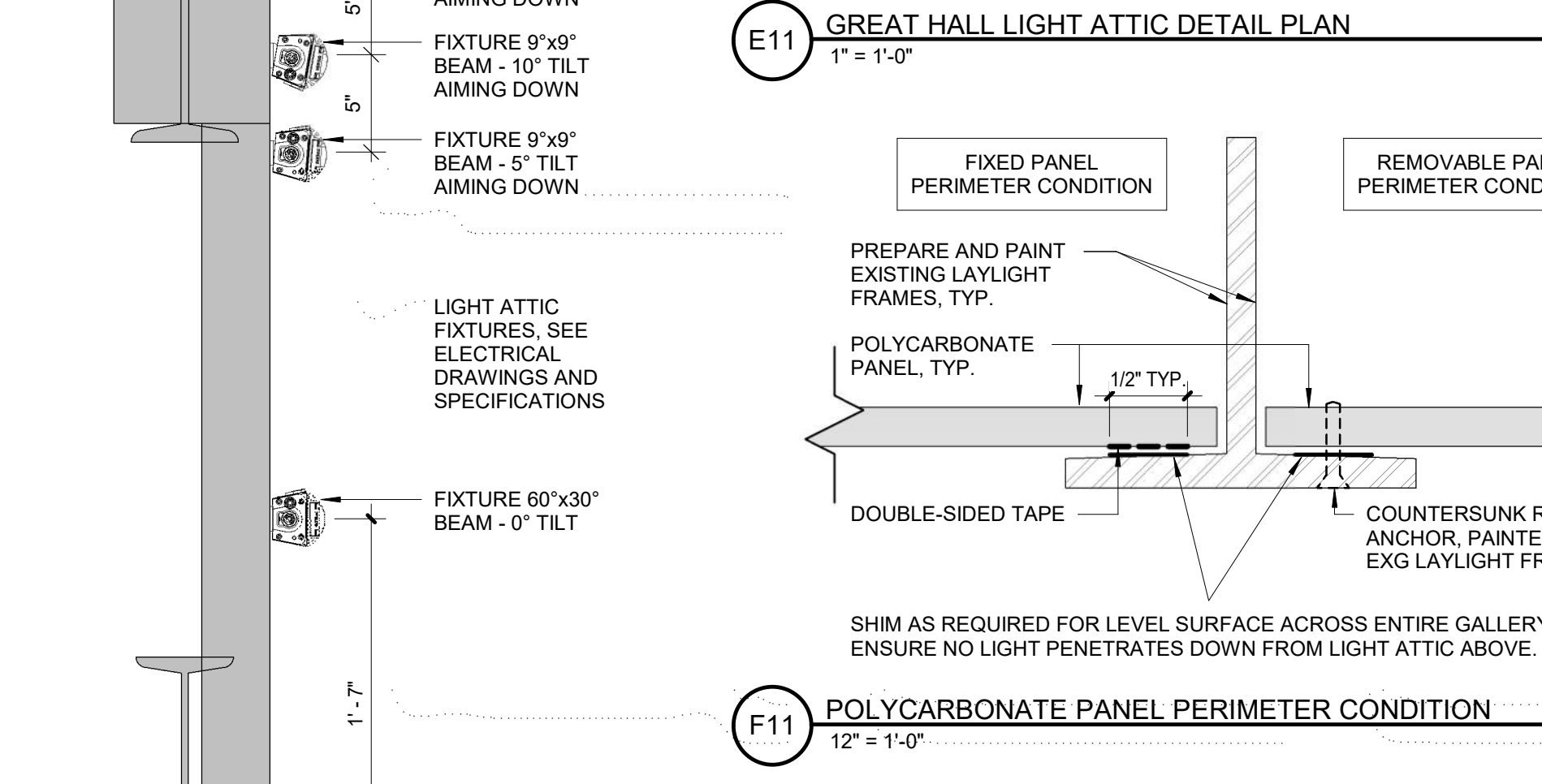
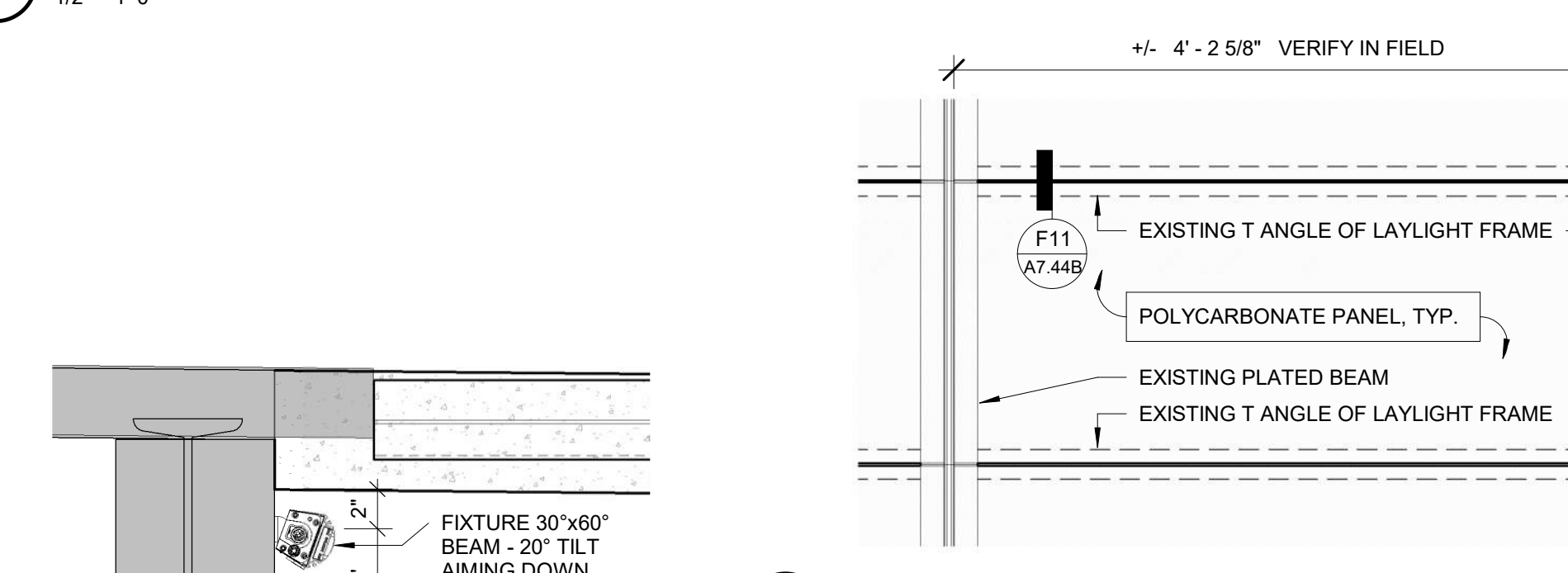
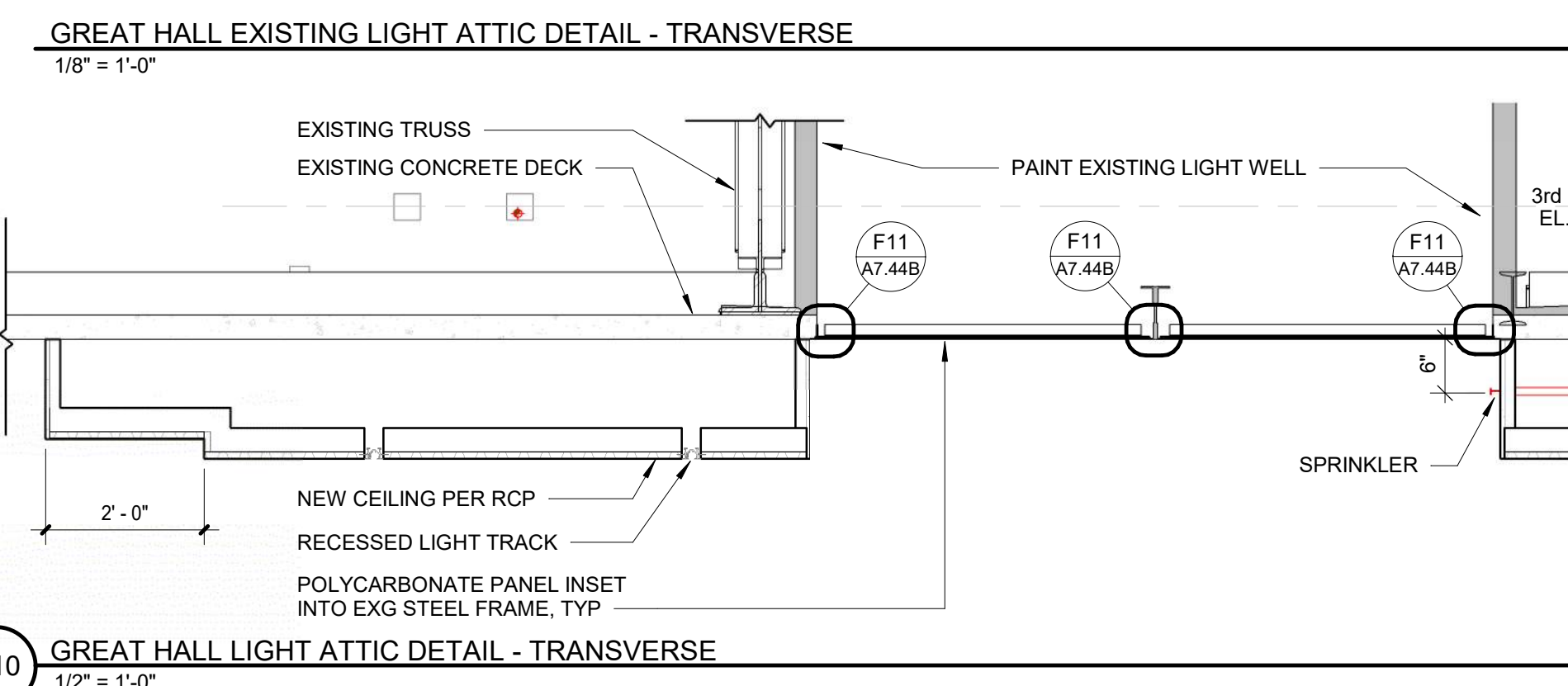
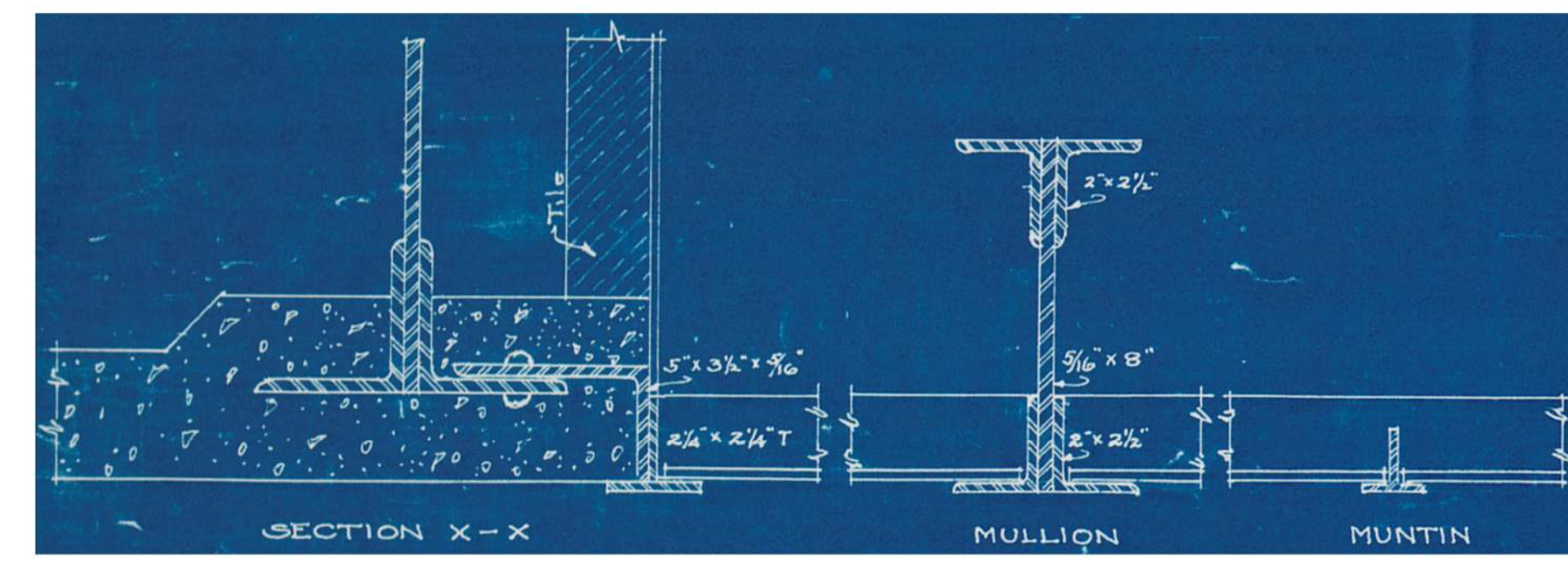
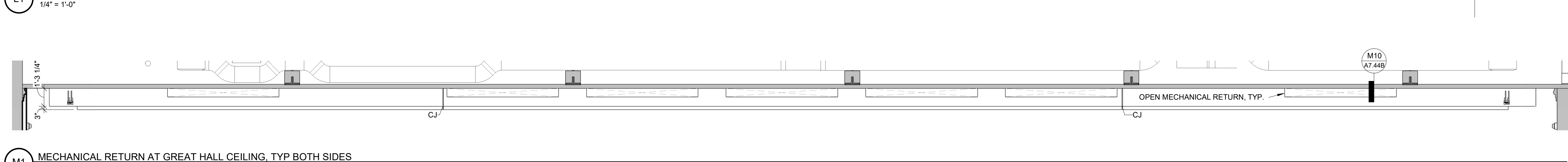
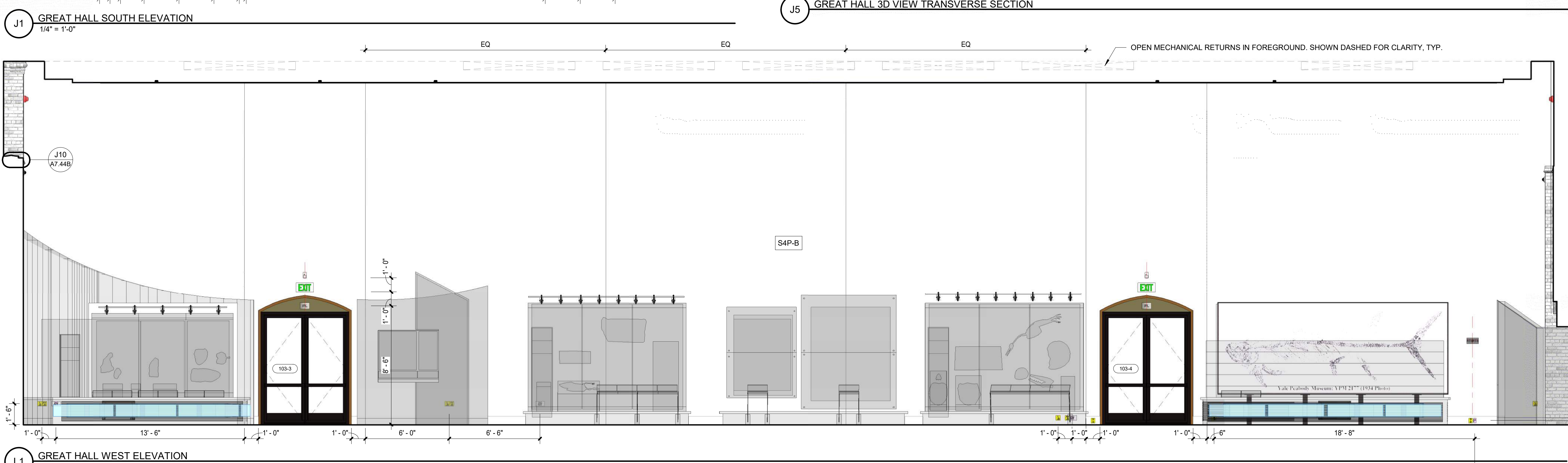
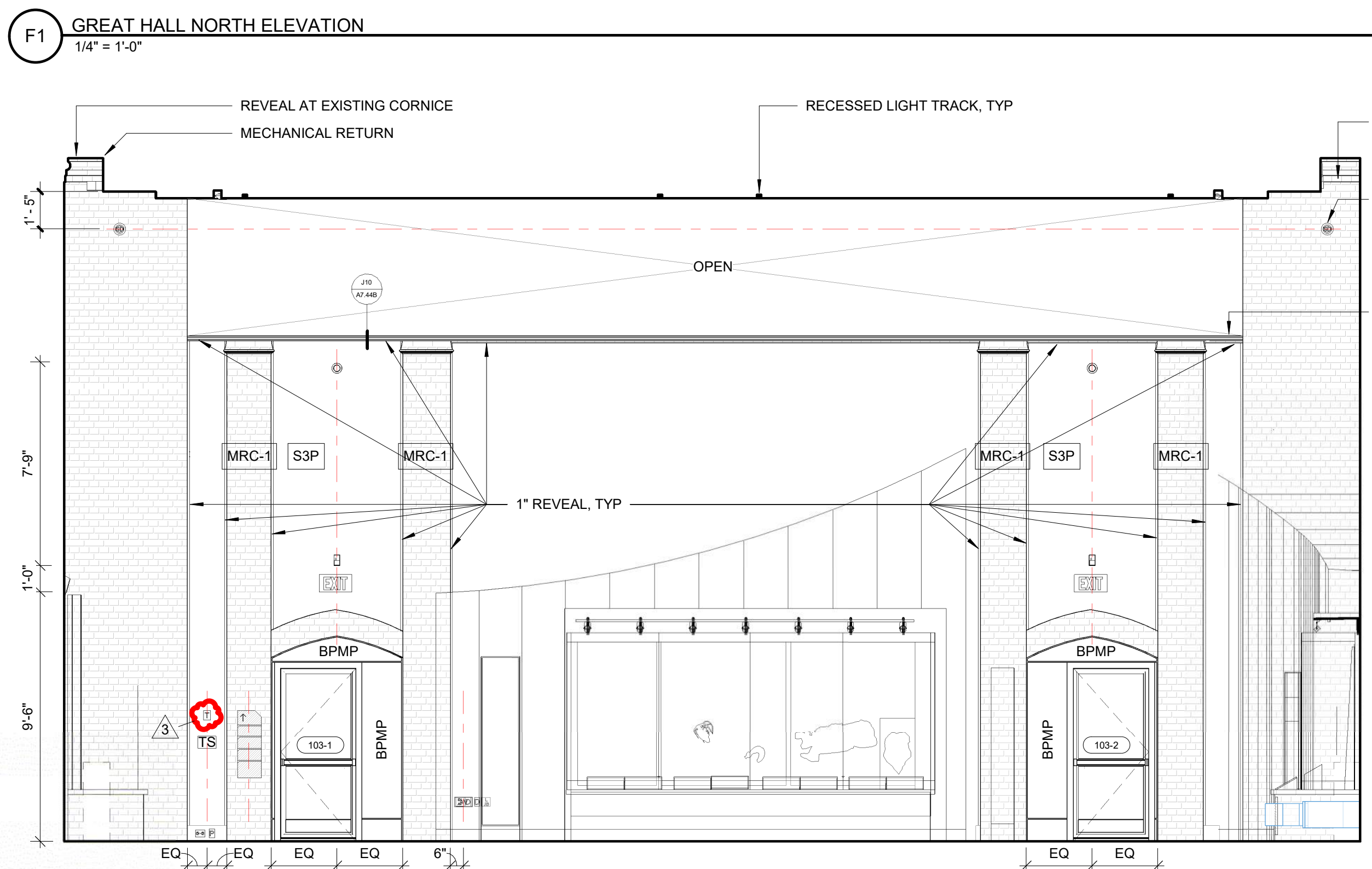
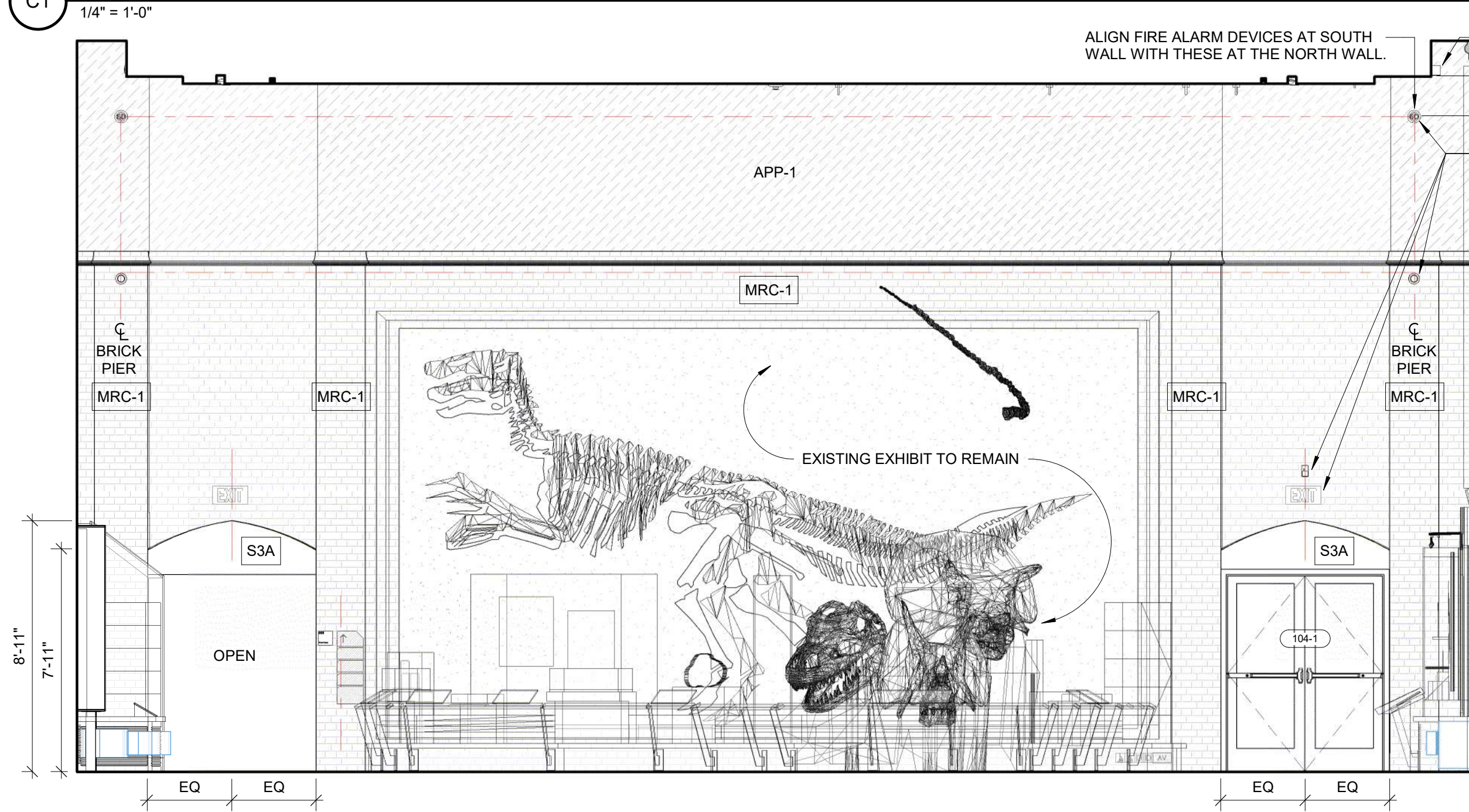
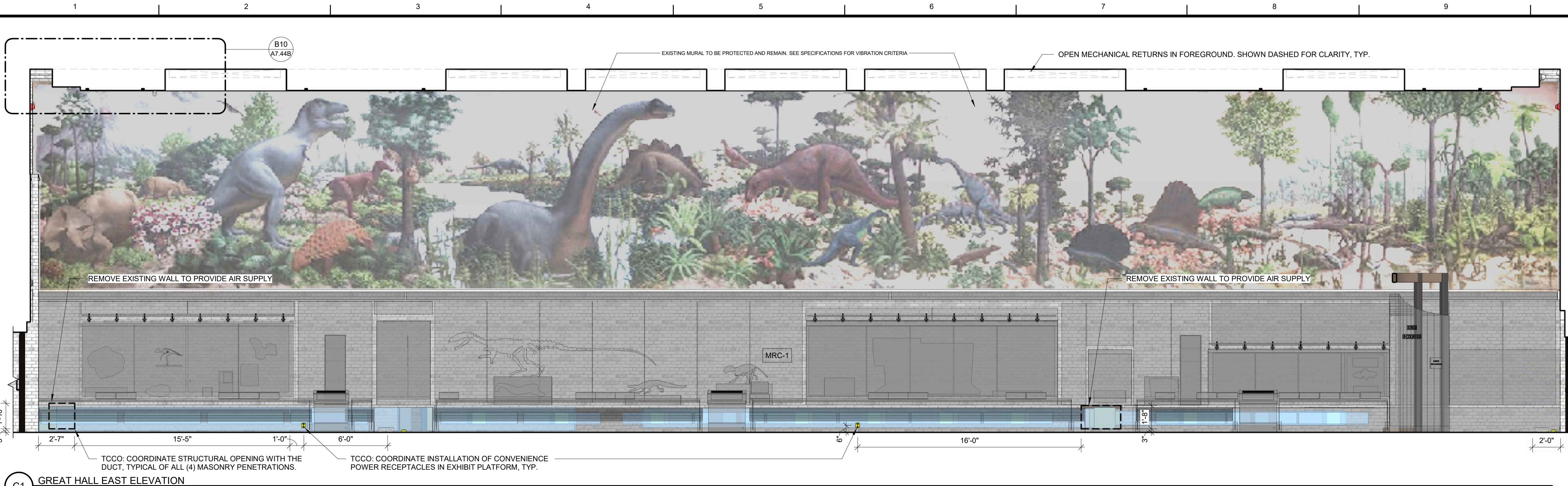
17101902_A7.44A

DATE

6/12/2020

DRAWING NUMBER

A7.44A



- GENERAL NOTES - ENLARGED PLANS, ENLARGED REFLECTED CEILING PLANS, INTERIOR ELEVATIONS**
1. REFER TO A800 SERIES DRAWINGS FOR CEILING AND FLOOR FINISH INFORMATION AND GENERAL NOTES
 2. REFER TO A200 SERIES DRAWINGS FOR RCP LEGEND
 3. REFER TO A800 SERIES FOR INTERIOR GLAZING DETAILS AND SCHEDULE
 4. REFER TO A900 SERIES FOR CASEWORK MENU, SCHEDULE AND NAMING CONVENTION
 5. WALL FINISH PAINTED, UNLESS NOTED OTHERWISE, TYPICAL
 6. REFER TO TYPICAL DEVICE MOUNTING HEIGHT DIAGRAM AT 70 TO LOCATE ELECTRICAL WALL DEVICES UNLESS NOTED OTHERWISE, TYPICAL
 7. OVERALL ROOM DIMENSIONS ON ENLARGED PLANS ARE MEASURED TO FACE OF FINISH
 8. SPOT ELEVATIONS IN EITHER ESC OR KGL ARE BASED ON LEVELS IN TYP.

INTERIOR PLAN LEGEND

EXISTING WALLS
EXISTING DOORS
NEW DOORS
AREA BEYOND ARCHITECTURAL PROJECT SCOPE
EXPANSION JOINT
REF: --- REFER TO SERIES SHEET FOR ENLARGED PLANS
SPR-F PARTITION TYPE, REFER TO PARTITION SCHEDULE
ACoustically Sensitive Partition Location

INTERIOR TAG LEGEND

ABBREVIATIONS

MRC-1	INTERIOR MASONRY REPAIR & CLEANING
MRC-2	CLEANING & REPAIR OF EXTERIOR MASONRY TO BECOME INTERIOR
MRC-6	INTERIOR MASONRY DUSTPROOFER
CSM-1	CAS STONE MASONRY
MB-1	DIAMOND PLATE WAINSCOT
CG-1	STAINLESS STEEL CORNER GUARD
CG-2	CUSTOM PAINTED CORNER GUARD
BPMP	BROnze PAINTED METAL PANEL
MSR-2	STEEL STAIR HANDRAIL/GUARDRAIL
MSR-6	METAL GRATE STAIRS
DMR-1	INTERIOR GUARD RAILS, PAINTED BRONZE
DMR-2	GLASS SUPPORTED RAILING
DMR-3	GUARDRAILS WITH WOOD HANDRAILS
DMR-4	STAINLESS STEEL ORNAMENTAL RAILINGS
WT-1	WOOD TRIM, TRANSPARENT FINISH
WT-2	WOOD TRIM, OPAQUE FINISH
WB-1	WOOD BASE, OPAQUE FINISH
WR-1	WOOD RAILING
PLC	PLASTIC LAMINATE COUNTERTOP*
SSC	SOLID SURFACE MATERIAL*
SPC	SOAP STONE BENCHTOP*
PHC	COMPOSITE LABORATORY WORK SURFACE*
WDC	BUTCHERBLOCK*
QZC	QUARTZ AGGLOMERATE COUNTERTOP*
SSC	PLASTIC COUNTERTOP*
ST	METAL MANUFACTURED TABLE SYSTEM*
WT	WOOD MANUFACTURED TABLE SYSTEM*
FLFS	LABORATORY FURNITURE SYSTEM*
WW	WOOD LABORATORY CASEWORK WALL CABINET*
WF	WOOD LABORATORY CASEWORK FULL HEIGHT CABINET*
WP	WOOD LABORATORY CASEWORK END COVER PANEL*
SW	METAL LABORATORY CASEWORK WALL CABINET*
SF	METAL LABORATORY CASEWORK FULL HEIGHT CABINET*
SB	METAL LABORATORY CASEWORK BASE CABINET*
SP	METAL LABORATORY CASEWORK END COVER PANEL*
AW	INTERIOR ARCHITECTURAL WOODWORK WALL CABINET**
AF	INTERIOR ARCHITECTURAL WOODWORK TALL CABINET**
AB	INTERIOR ARCHITECTURAL WOODWORK BASE CABINET**
WL	WOOD LOCKER**
ML	METAL LOCKER**
WSL	WOOD SHELF**
STSL	STAINLESS STEEL SHELF**
PLS	PLASTIC LAMINATE SHELF**
ASB	WOOD SHELF BRACKET**
WA1	COAT HOOKS ON WOOD BACKPLATE**
MRP-1	MARSH ROOM PANELING
RESTORATION	RESTORATION
FRP-1	GLASS FIBER REINFORCED WALL PANELING
ISF	INTERIOR ALUMINUM STOREFRONT***
FRQ	FIRE RATED STOREFRONT***
AGP-1	SEAMLESS ACOUSTIC PLASTER SYSTEM
PPT-1	GAUDED PORCELAIN PANEL
PPT-2	GAUDED PORCELAIN FLOOR TILE
PPT-3	THROUGH BODY PORCELAIN WALL TILE
PPT-4	EXTERIOR TILE
AWP-2	1 1/8" IMPACT RESISTANT TACKABLE WALL PANEL
AWP-3	2 1/8" IMPACT RESISTANT TACKABLE WALL PANEL
AWP-6	BUCKSON WRAPPED PANEL
PNT	PAINTED FINISH, REFER TO FINISH PLANS
MKB0-4	DRY ERASE MAGNETIC WRITING SURFACE
MKB0-8	ERASABLE MAGNETIC GLASS MARKER BOARD
MP-1	MAGNETIC PLASTER SURFACE
DR-1	HANGING DISPLAY SYSTEM
DR-2	HANGING DISPLAY SYSTEMS
TKB0-1	TACKBOARD LINOLEUM RESILIENT
RMS	SIGNAGE
VMP	WIRE MESH PARTITIONS
OP-1	FOLDING PANEL PARTITIONS
BR	BUMPER RAIL
AED	AUTOMATIC EXTERNAL DEFIBRILLATOR
FEC-1	RECESSED FIRE EXTINGUISHER CABINET
FEC-2	SEMI-RECESSED FIRE EXTINGUISHER CABINET
RS	WINDOW SHADE, REFER TO A200 SERIES

PROPERTY VALUE TEST METHOD

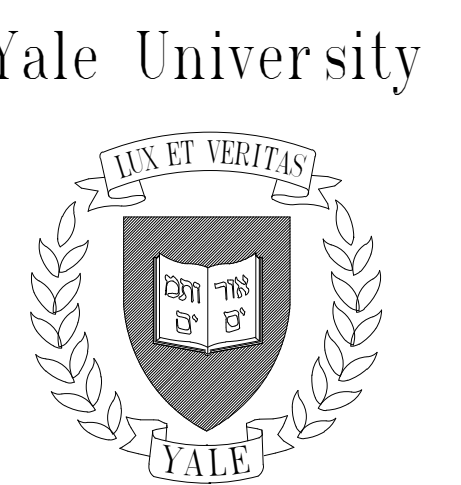
LIGHT TRANSMISSION @ 0.118"	50%	ASTM D 1003
COLOR	WHITE	
THICKNESS	0.093" - 0.236"	
HORIZONTAL BURN, AEB	<1 IN	ASTM D 835
FLAME GLASS @ 0.093"	UL 94	
IMPACT RESISTANCE, @ 0.125"	47 FT/LBS	ASTM D 3763

BASIS OF DESIGN

TUFFAK LD POLYCARBONATE, B48 WHITE @ 0.118" ALTERNATE PRODUCTS REDUCE SUBMISSION OF 2"X4" SAMPLE FOR REVIEW IN FIELD BY OWNER, ARCHITECT AND LIGHTING DESIGNER.

POLYCARBONATE PANEL REQUIREMENTS

12" x 1'-0"



Central Campus
Office of Facilities
2 Whitney Avenue
New Haven, CT 06520

Acoustic & Audio Visual Consultant
CAVANAUGH TOCCI ASSOCIATES Inc.
Building Envelope Consultant
LEAVITT ASSOCIATES Inc.
Civil Engineer
LANGAN ENGINEERING
Code Consultant
PHILIP R. SHERMAN, P.E.
Elevator Consultant
STERLING ELEVATOR CONSULTANTS, LLC
Door Hardware Consultant
ARKASPEC, Inc.
Irrigation Consultant
NORTHERN DESIGNS LLC
Landscape Architects
JAMES CORNER FIELD OPERATIONS
Lighting Designer
CIBLD Inc.
Signage Consultant
STRONG COHEN LLC
Site Steam Engineer
RMF ENGINEERING Inc.
Specification Writer
KALIN ASSOCIATES Inc.
Structural Engineer
GILZANZ MURRAY STEPIEC LLP
Mechanical, Electrical, Plumbing, Fire Protection, Fire Alarm, IT & Security Engineers
ARUP

CENTERBROOK
Architects and Planners, LLP
67 Main Street
Post Office Box 955
Centerbrook, Connecticut 06409-0955
Telephone 860.767.0175
Facsimile 860.767.8719

PROJECT NAME
Yale Peabody Museum
Comprehensive
Renovation

BUILDING NAME & ADDRESS
YALE PEABODY MUSEUM
145 WHITNEY AVENUE, NEW HAVEN, CT

PROJECT NUMBER
17101902

PROJECT NAME
Yale Peabody Museum
Comprehensive
Renovation

BUILDING NAME & ADDRESS
YALE PEABODY MUSEUM
145 WHITNEY AVENUE, NEW HAVEN, CT

PROJECT NUMBER
17101902

PROJECT NAME
Yale Peabody Museum
Comprehensive
Renovation

BUILDING NAME & ADDRESS
YALE PEABODY MUSEUM
145 WHITNEY AVENUE, NEW HAVEN, CT

PROJECT NUMBER
17101902

PROJECT NAME
Yale Peabody Museum
Comprehensive
Renovation

BUILDING NAME & ADDRESS
YALE PEABODY MUSEUM
145 WHITNEY AVENUE, NEW HAVEN, CT

PROJECT NUMBER
17101902

PROJECT NAME
Yale Peabody Museum
Comprehensive
Renovation

BUILDING NAME & ADDRESS
YALE PEABODY MUSEUM
145 WHITNEY AVENUE, NEW HAVEN, CT

PROJECT NUMBER
17101902

A7.44B