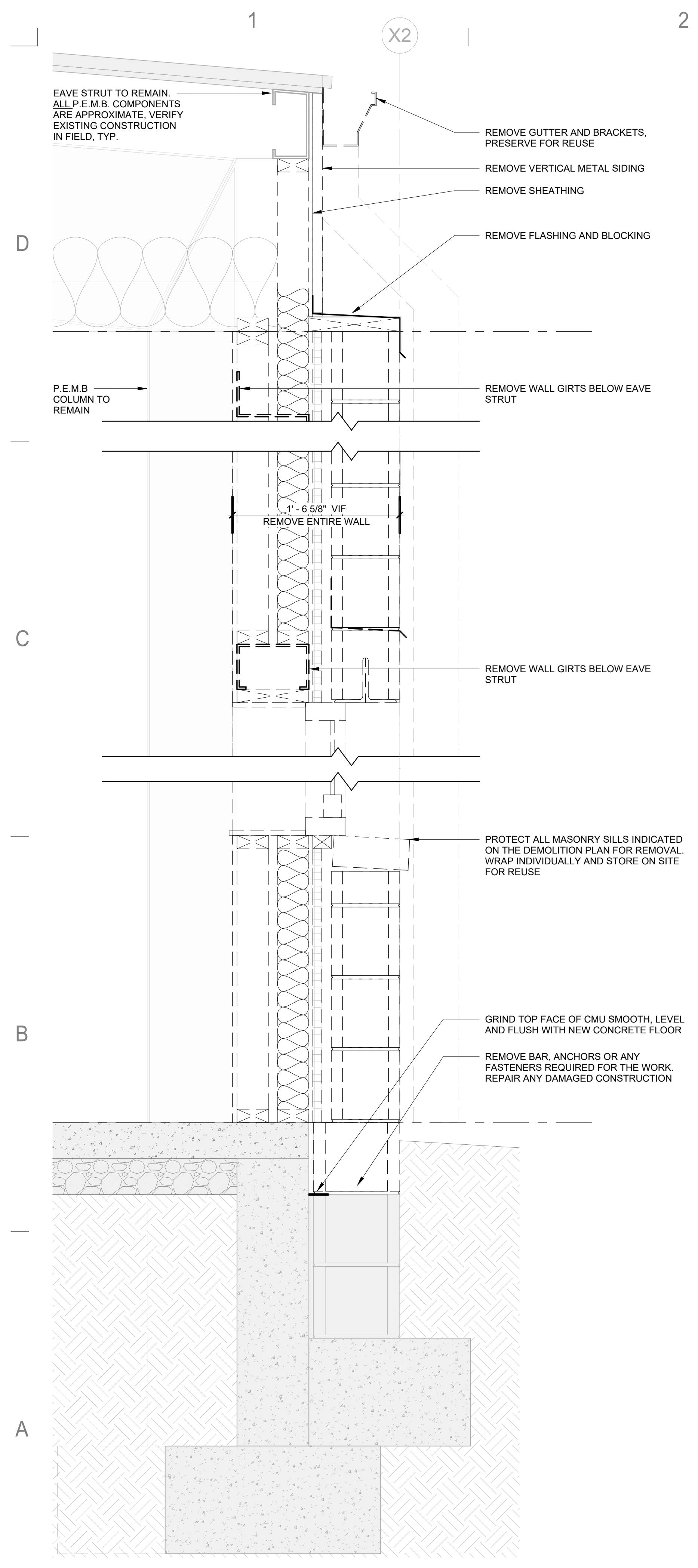
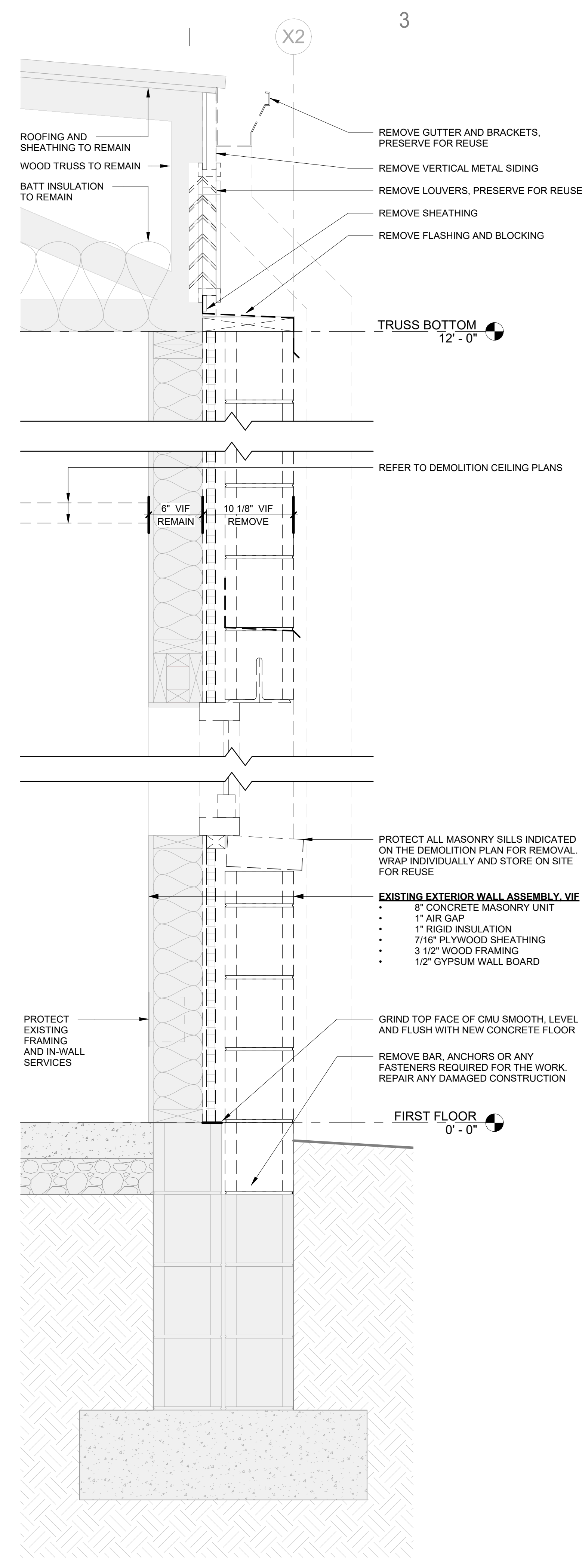


ALL IDEAS, ARRANGEMENTS AND PLANS INDICATED OR REPRESENTED BY THIS DRAWING ARE OWNED BY AND THE PROPERTY OF STROSSER BAER ARCHITECTS AND WERE CREATED, EVOLVED, AND DEVELOPED FOR USE ON AND IN CONNECTION WITH THE SPECIFIED PROJECT. NONE OF THE IDEAS, DESIGNS, ARRANGEMENTS, OR PLANS SHALL BE USED BY OR DISCLOSED TO ANY PERSON, FIRM, OR CORPORATION FOR ANY PURPOSE WHATSOEVER WITHOUT WRITTEN CONSENT OF STROSSER BAER ARCHITECTS. WRITTEN DIMENSIONS ON THESE DRAWINGS SHALL HAVE PRECEDENCE OVER SCALE DIMENSIONS. CONTRACTORS SHALL VERIFY AND BE RESPONSIBLE FOR ALL DIMENSIONS AND CONDITIONS ON THE JOB AND THIS OFFICE MUST BE NOTIFIED OF ANY VARIATION FROM THE DIMENSIONS AND CONDITIONS SHOWN BY THESE DRAWINGS.



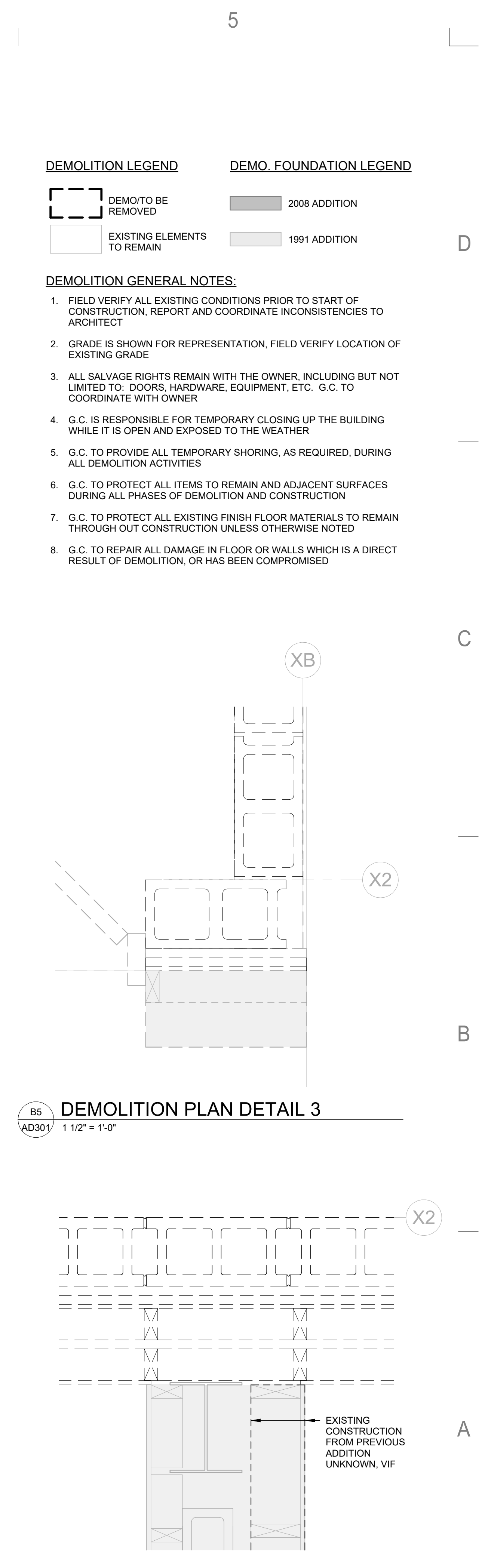
A1 DEMO WALL SECTION AT METAL BUILDING
AD301/ 1 1/2" = 1'-0"



A2 DEMO WALL SECTION AT WOOD ADDITION
AD301/ 1 1/2" = 1'-0"



A4 DEMOLITION PLAN DETAIL 1
AD301/ 1 1/2" = 1'-0"

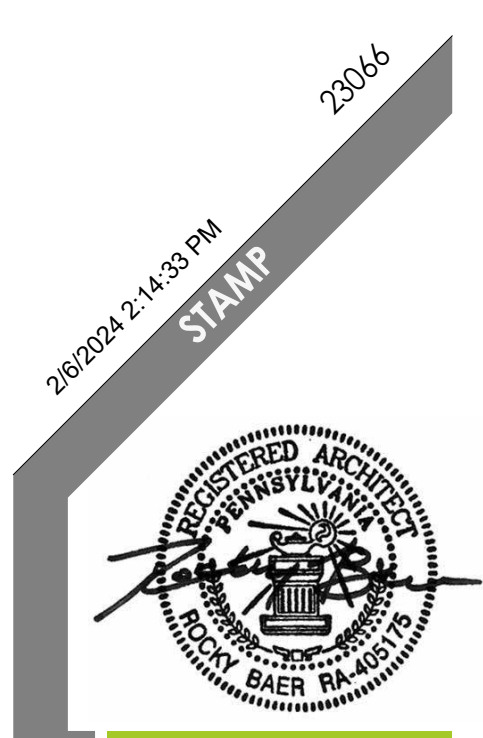


A5 DEMOLITION PLAN DETAIL 2
AD301/ 1 1/2" = 1'-0"

DEMOLITION LEGEND
 [Dashed line] DEMO/TO BE REMOVED
 [Solid line] EXISTING ELEMENTS TO REMAIN

DEMO. FOUNDATION LEGEND
 [Dark grey] 2008 ADDITION
 [Light grey] 1991 ADDITION

- DEMOLITION GENERAL NOTES:**
- FIELD VERIFY ALL EXISTING CONDITIONS PRIOR TO START OF CONSTRUCTION. REPORT AND COORDINATE INCONSISTENCIES TO ARCHITECT
 - GRADE IS SHOWN FOR REPRESENTATION, FIELD VERIFY LOCATION OF EXISTING GRADE
 - ALL SALVAGE RIGHTS REMAIN WITH THE OWNER, INCLUDING BUT NOT LIMITED TO: DOORS, HARDWARE, EQUIPMENT, ETC. G.C. TO COORDINATE WITH OWNER
 - G.C. IS RESPONSIBLE FOR TEMPORARY CLOSING UP THE BUILDING WHILE IT IS OPEN AND EXPOSED TO THE WEATHER
 - G.C. TO PROVIDE ALL TEMPORARY SHORING, AS REQUIRED, DURING ALL DEMOLITION ACTIVITIES
 - G.C. TO PROTECT ALL ITEMS TO REMAIN AND ADJACENT SURFACES DURING ALL PHASES OF DEMOLITION AND CONSTRUCTION
 - G.C. TO PROTECT ALL EXISTING FINISH FLOOR MATERIALS TO REMAIN THROUGH OUT CONSTRUCTION UNLESS OTHERWISE NOTED
 - G.C. TO REPAIR ALL DAMAGE IN FLOOR OR WALLS WHICH IS A DIRECT RESULT OF DEMOLITION, OR HAS BEEN COMPROMISED



SBA ARCHITECTS
 700 NORTH 4th STREET, SUITE A
 SUNBURRY, PA 17801

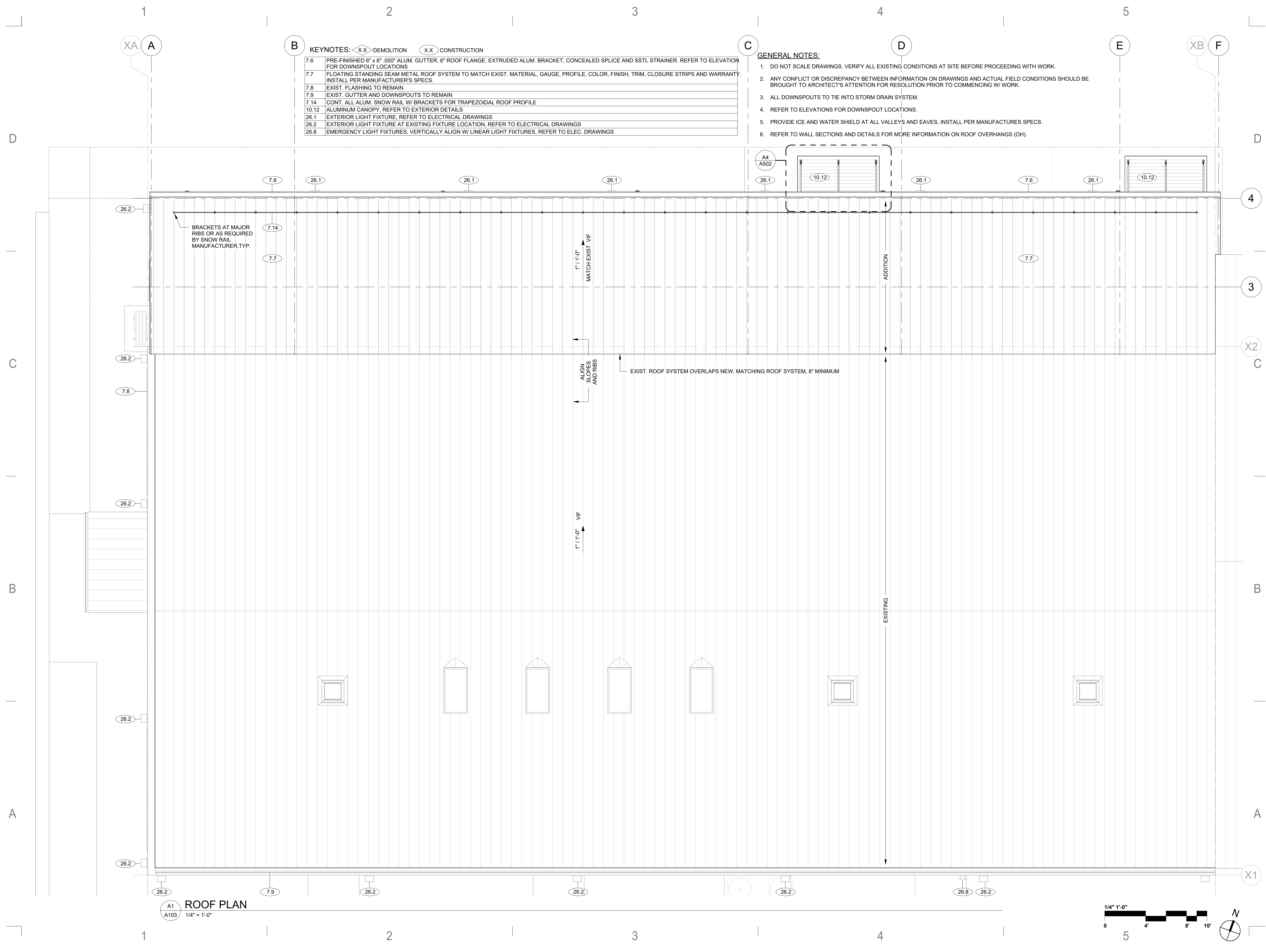
#	Description	Date
	CONSTRUCTION DOCUMENTS	02.06.2024

ISSUE DATE: 02.06.2024
 ISSUE TYPE: CONSTRUCTION DOCUMENTS

DEMOLITION DETAILS
 WASHINGTON TOWNSHIP MUNICIPAL BUILDING ADDITION
 CONSTRUCTION DOCUMENTS
 185 MANORS ROAD
 ELIZABETHVILLE, PA 17023

AD301

ALL IDEAS, ARRANGEMENTS AND PLANS INDICATED OR REPRESENTED BY THIS DRAWING ARE OWNED BY AND THE PROPERTY OF STROSSER BAER ARCHITECTS AND WERE CREATED, EVOLVED, AND DEVELOPED FOR USE ON AND IN CONNECTION WITH THE SPECIFIED PROJECT. NONE OF THE IDEAS, DESIGNS, ARRANGEMENTS, OR PLANS SHALL BE USED BY OR DISCLOSED TO ANY PERSON, FIRM, OR CORPORATION FOR ANY PURPOSE WHATSOEVER WITHOUT WRITTEN CONSENT OF STROSSER BAER ARCHITECTS. WRITTEN CONSENT ON THESE DRAWINGS SHALL HAVE PRECEDENCE OVER SCALE DIMENSIONS. CONTRACTORS SHALL VERIFY AND BE RESPONSIBLE FOR ALL DIMENSIONS AND CONDITIONS ON THE JOB AND THIS OFFICE MUST BE NOTIFIED OF ANY VARIATION FROM THE DIMENSIONS AND CONDITIONS SHOWN BY THESE DRAWINGS.

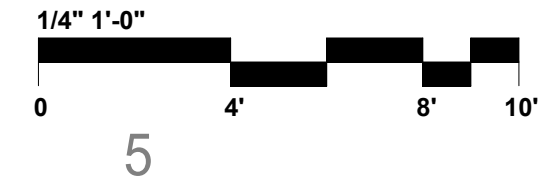


KEYNOTES: (X) DEMOLITION (XX) CONSTRUCTION

7.6	PRE-FINISHED 6" x 6" .050" ALUM. GUTTER, 6" ROOF FLANGE, EXTRUDED ALUM. BRACKET, CONCEALED SPLICE AND SSTL STRAINER. REFER TO ELEVATION FOR DOWNSPOUT LOCATIONS
7.7	FLOATING STANDING SEAM METAL ROOF SYSTEM TO MATCH EXIST. MATERIAL, GAUGE, PROFILE, COLOR, FINISH, TRIM, CLOSURE STRIPS AND WARRANTY. INSTALL PER MANUFACTURER'S SPECS.
7.8	EXIST. FLASHING TO REMAIN
7.9	EXIST. GUTTER AND DOWNSPOUTS TO REMAIN
7.14	CONT. ALL ALUM. SNOW RAIL W/ BRACKETS FOR TRAPEZOIDAL ROOF PROFILE
10.12	ALUMINUM CANOPY, REFER TO EXTERIOR DETAILS
26.1	EXTERIOR LIGHT FIXTURE, REFER TO ELECTRICAL DRAWINGS
26.2	EXTERIOR LIGHT FIXTURE AT EXISTING FIXTURE LOCATION, REFER TO ELECTRICAL DRAWINGS
26.8	EMERGENCY LIGHT FIXTURES, VERTICALLY ALIGN W/ LINEAR LIGHT FIXTURES, REFER TO ELEC. DRAWINGS

- GENERAL NOTES:**
- DO NOT SCALE DRAWINGS. VERIFY ALL EXISTING CONDITIONS AT SITE BEFORE PROCEEDING WITH WORK.
 - ANY CONFLICT OR DISCREPANCY BETWEEN INFORMATION ON DRAWINGS AND ACTUAL FIELD CONDITIONS SHOULD BE BROUGHT TO ARCHITECT'S ATTENTION FOR RESOLUTION PRIOR TO COMMENCING W/ WORK.
 - ALL DOWNSPOUTS TO TIE INTO STORM DRAIN SYSTEM.
 - REFER TO ELEVATIONS FOR DOWNSPOUT LOCATIONS.
 - PROVIDE ICE AND WATER SHIELD AT ALL VALLEYS AND EAVES, INSTALL PER MANUFACTURER'S SPECS.
 - REFER TO WALL SECTIONS AND DETAILS FOR MORE INFORMATION ON ROOF OVERHANGS (OH).

A1
A103
ROOF PLAN
1/4" = 1'-0"



2/6/2024 2:14:40 PM
STAMP



SBA
ARCHITECTS
STROSSER BAER ARCHITECTS, INC.
700 NORTH 4th STREET, SUITE A
SUNBURY, PA 17601

REVISIONS

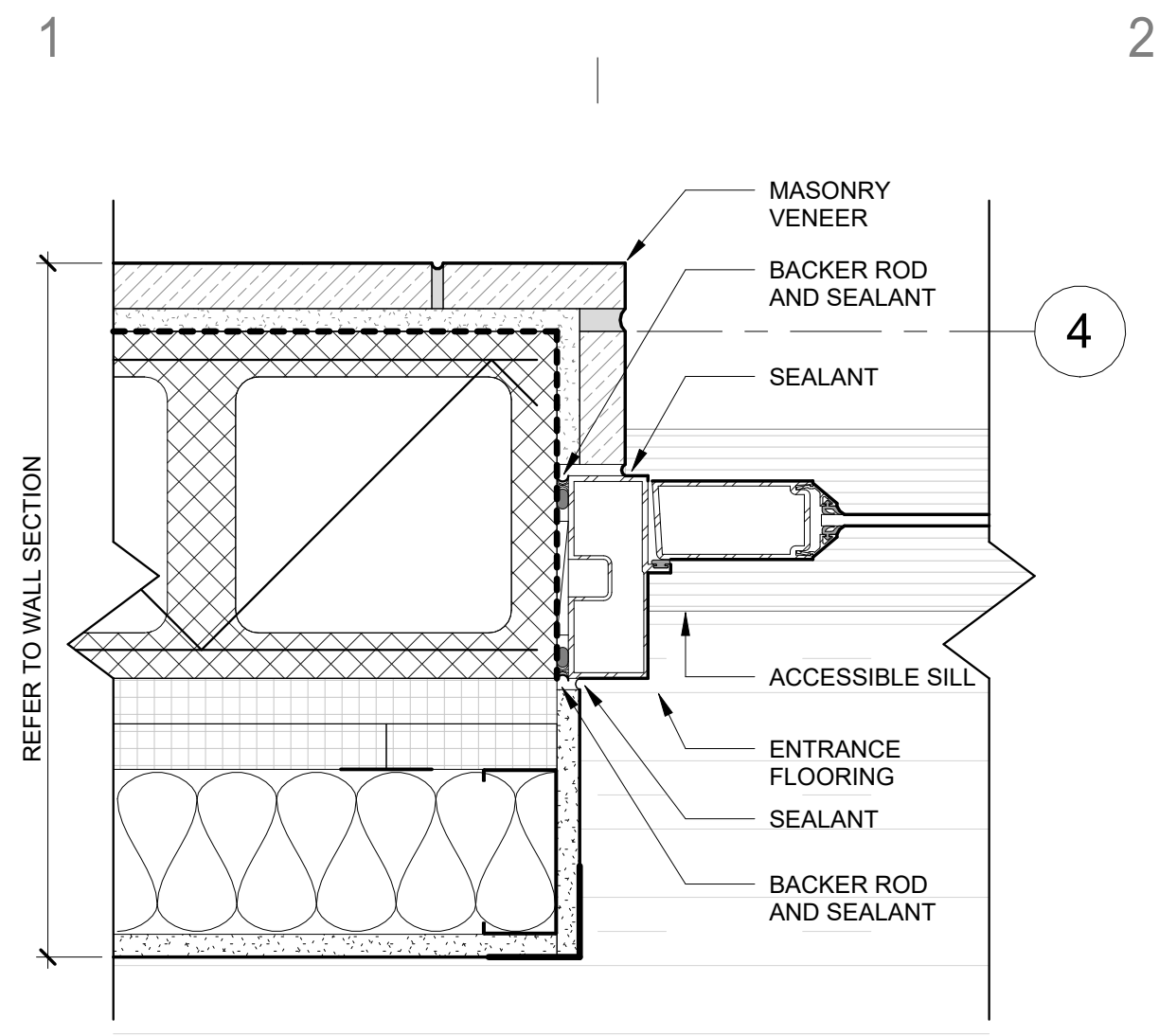
#	Description	Date

ISSUE DATE: 02.06.2024
ISSUE TYPE: CONSTRUCTION DOCUMENTS

ROOF PLAN
WASHINGTON TOWNSHIP MUNICIPAL BUILDING ADDITION
CONSTRUCTION DOCUMENTS
185 MANORS ROAD
ELIZABETHVILLE, PA 17023

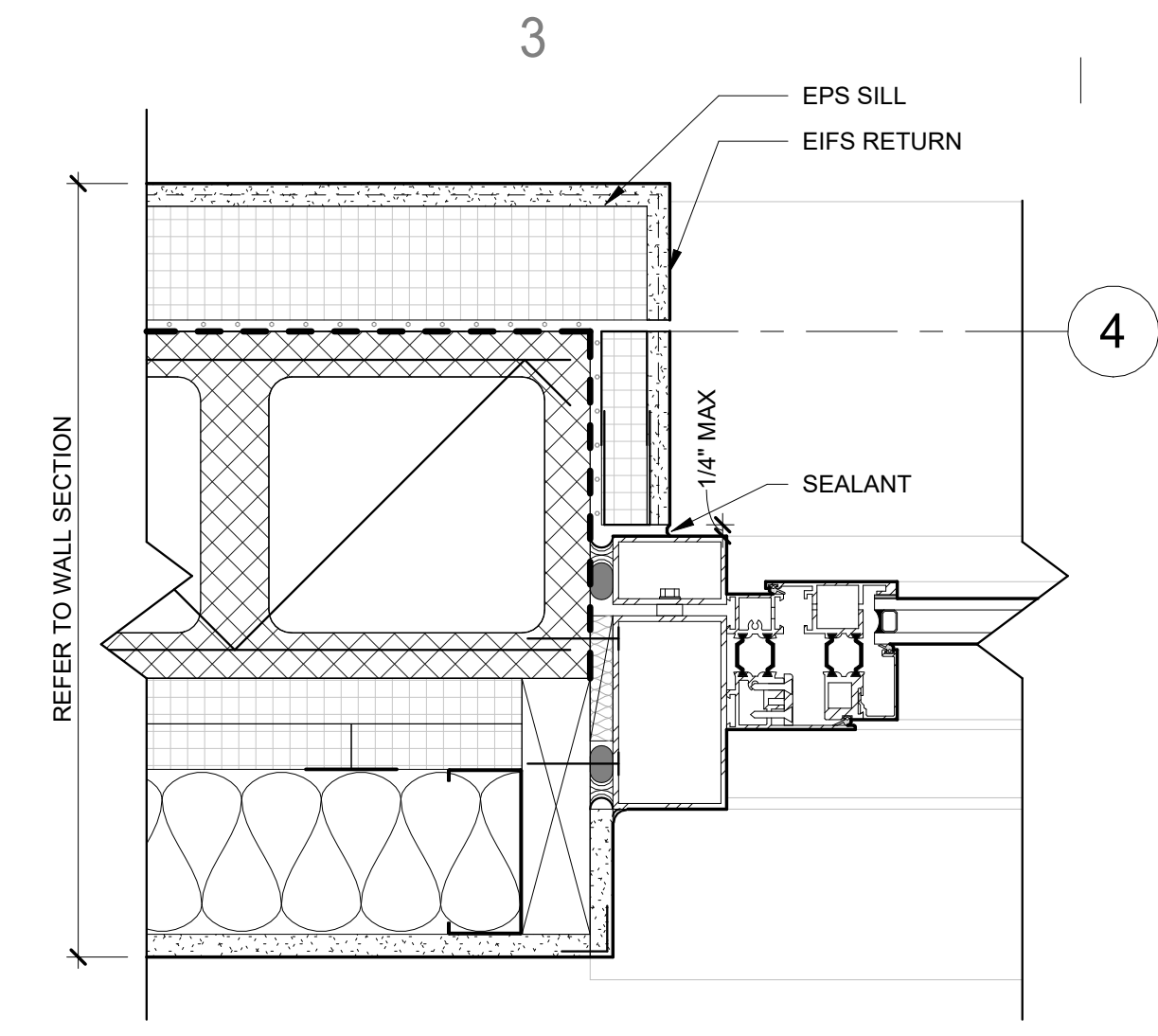
A103

ALL IDEAS, ARRANGEMENTS AND PLANS INDICATED OR REPRESENTED BY THIS DRAWING ARE OWNED BY AND THE PROPERTY OF STROSSER BAER ARCHITECTS AND WERE CREATED, EVOLVED, AND DEVELOPED FOR USE ON AND IN CONNECTION WITH THE SPECIFIED PROJECT. NONE OF THE IDEAS, DESIGNS, ARRANGEMENTS, OR PLANS SHALL BE USED BY OR DISCLOSED TO ANY PERSON, FIRM, OR CORPORATION FOR ANY PURPOSE WHATSOEVER WITHOUT THE WRITTEN CONSENT OF STROSSER BAER ARCHITECTS. WRITTEN DIMENSIONS ON THESE DRAWINGS SHALL HAVE PRECEDENCE OVER SCALE DIMENSIONS. CONTRACTORS SHALL VERIFY AND BE RESPONSIBLE FOR ALL DIMENSIONS AND CONDITIONS ON THE JOB AND THIS OFFICE MUST BE NOTIFIED OF ANY VARIATION FROM THE DIMENSIONS AND CONDITIONS SHOWN BY THESE DRAWINGS.



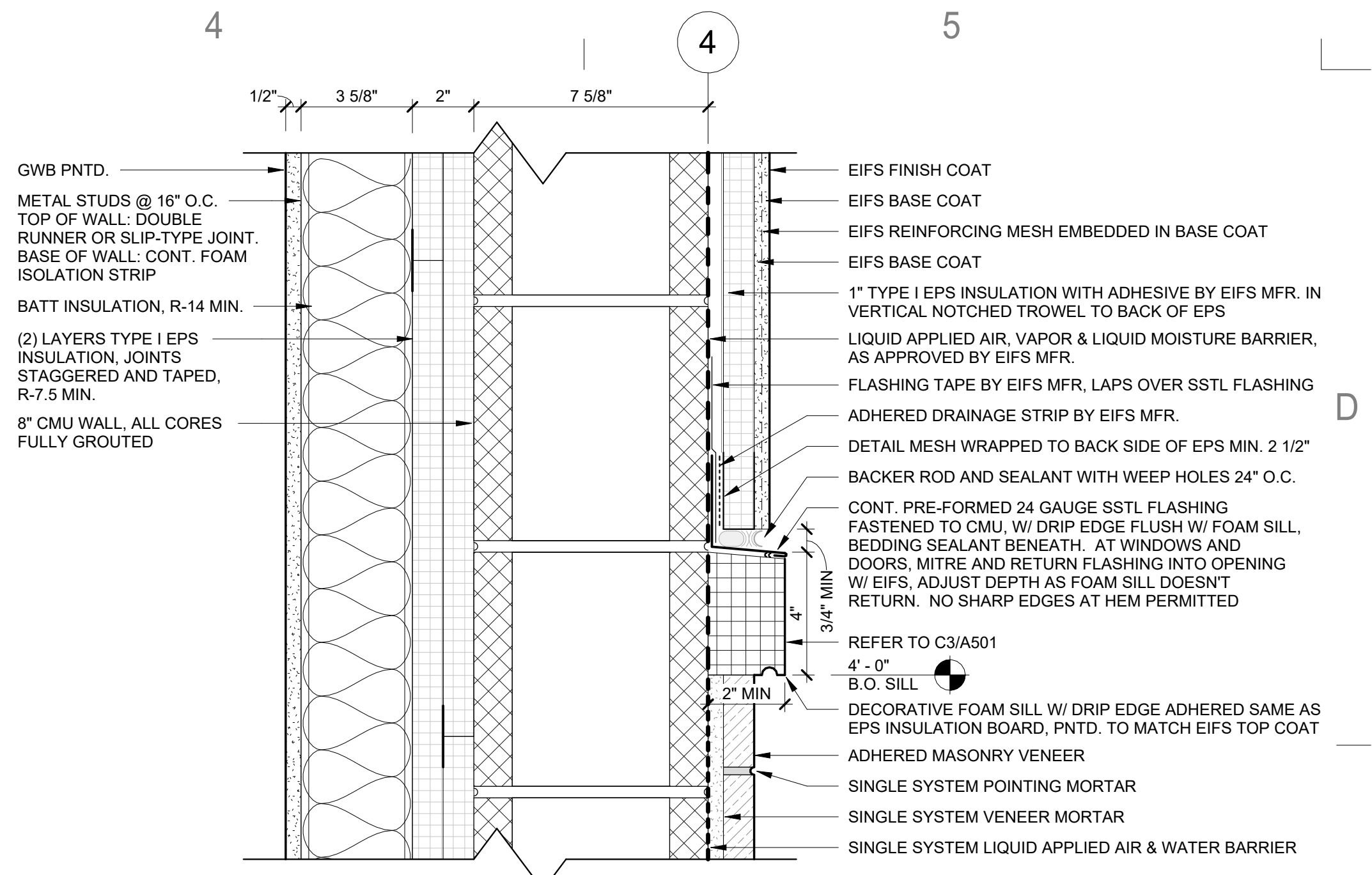
C1
A501
3" = 1'-0"

EXTERIOR DOOR JAMB DETAIL



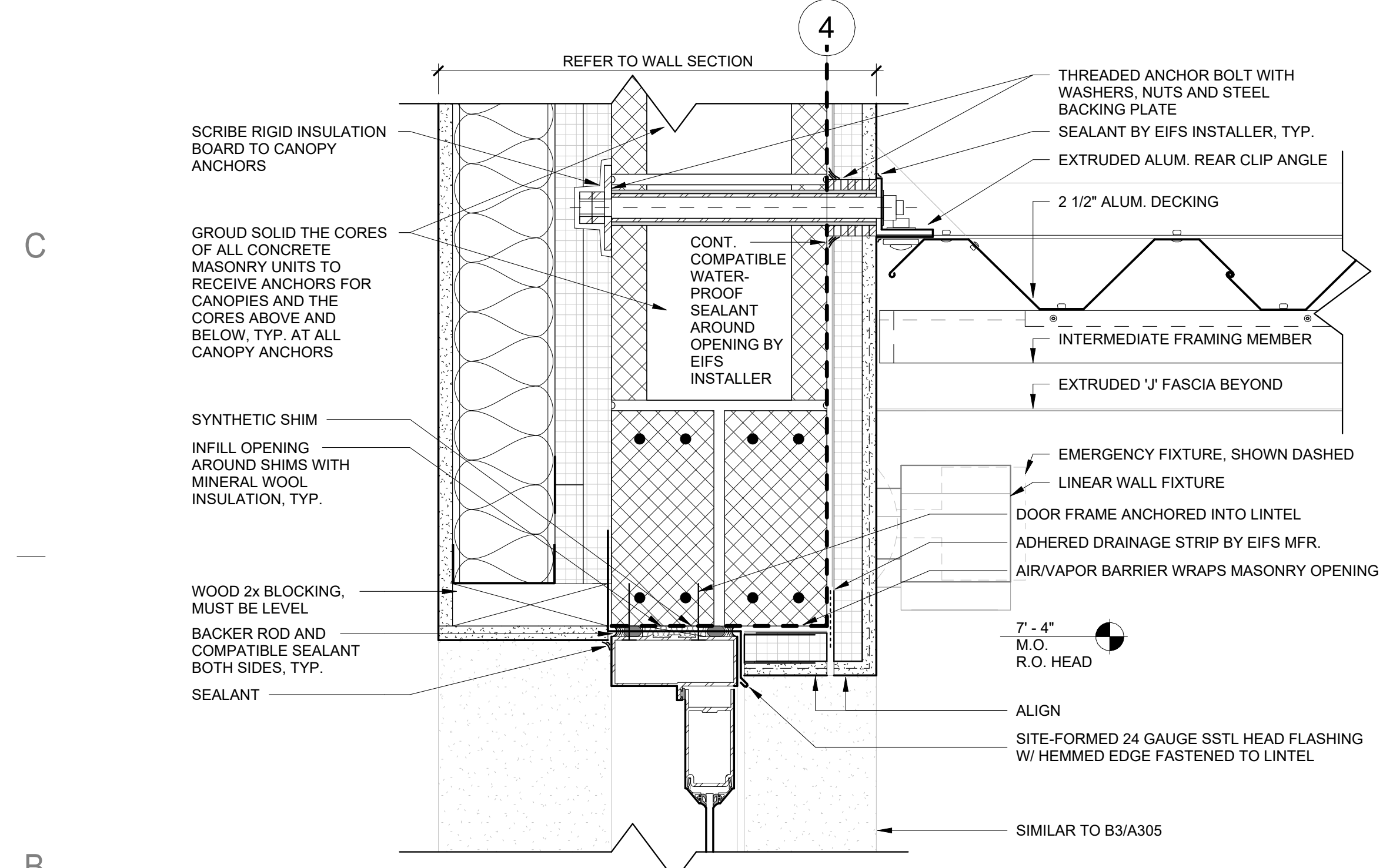
C3
A501
3" = 1'-0"

JAMB DETAIL AT EPS SILL



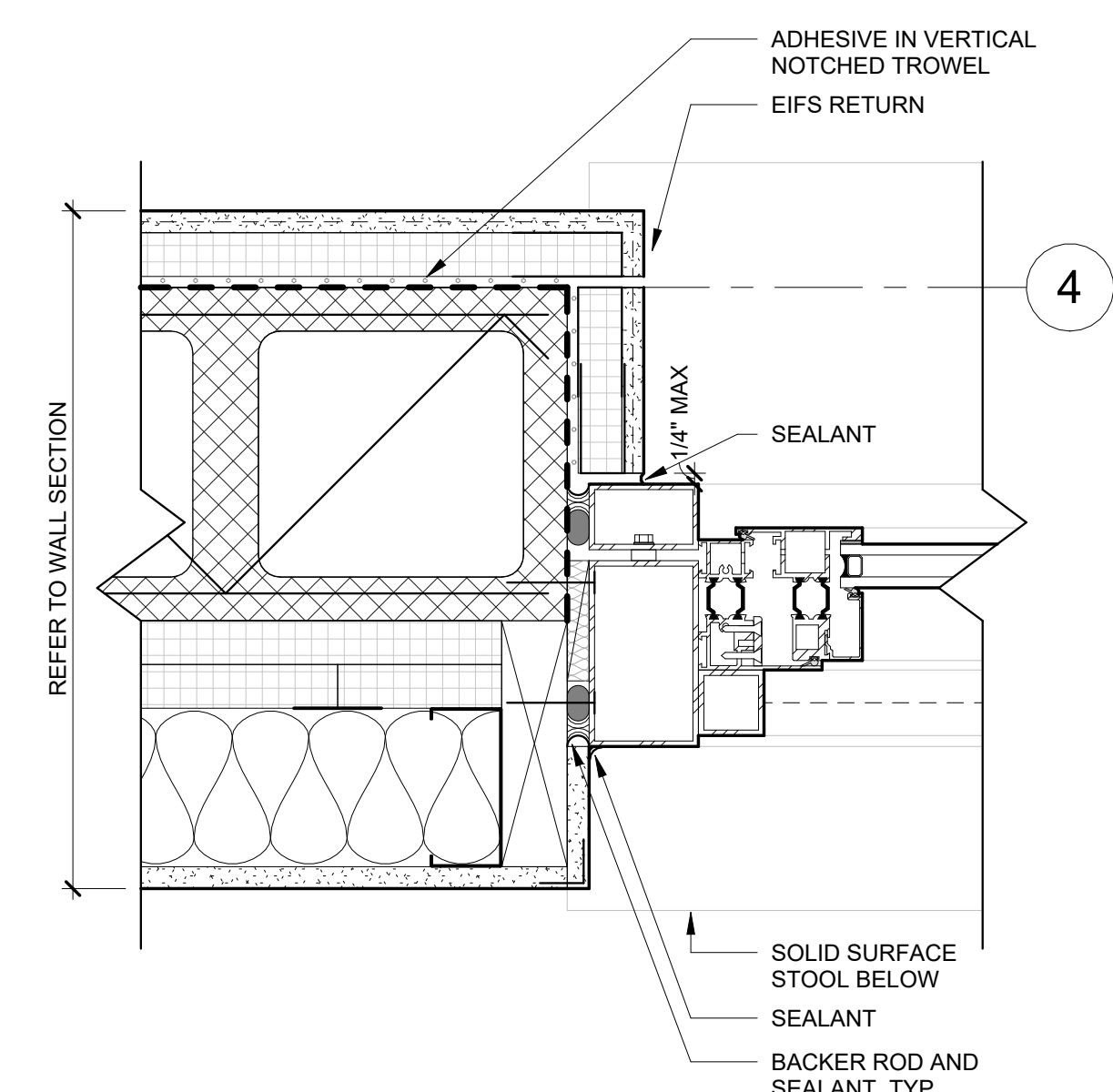
C4
A501
3" = 1'-0"

WALL SECTION AT MASONRY VENEER TO EIFS TRANSITION



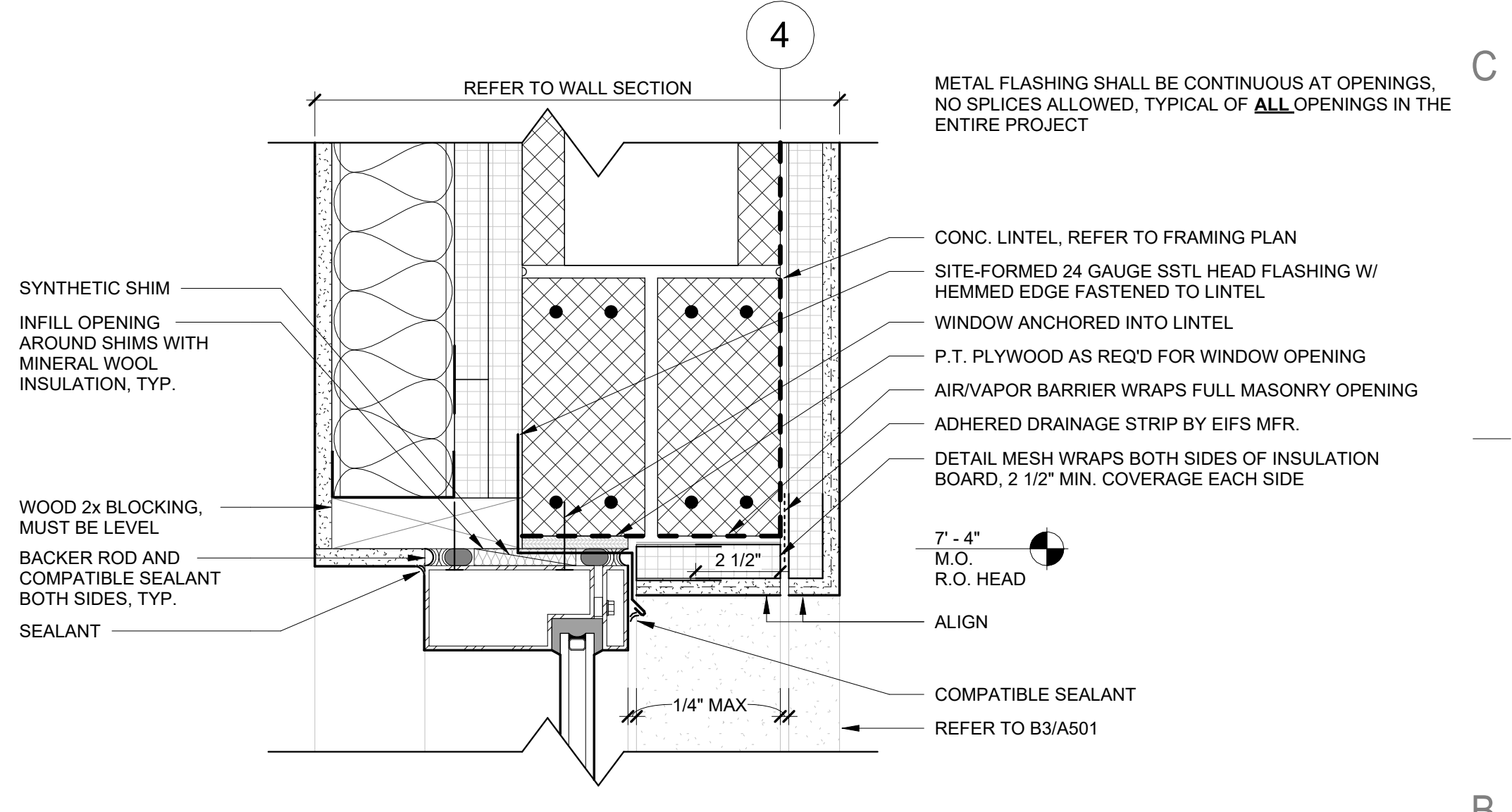
B1
A501
3" = 1'-0"

EXTERIOR DOOR HEAD DETAIL



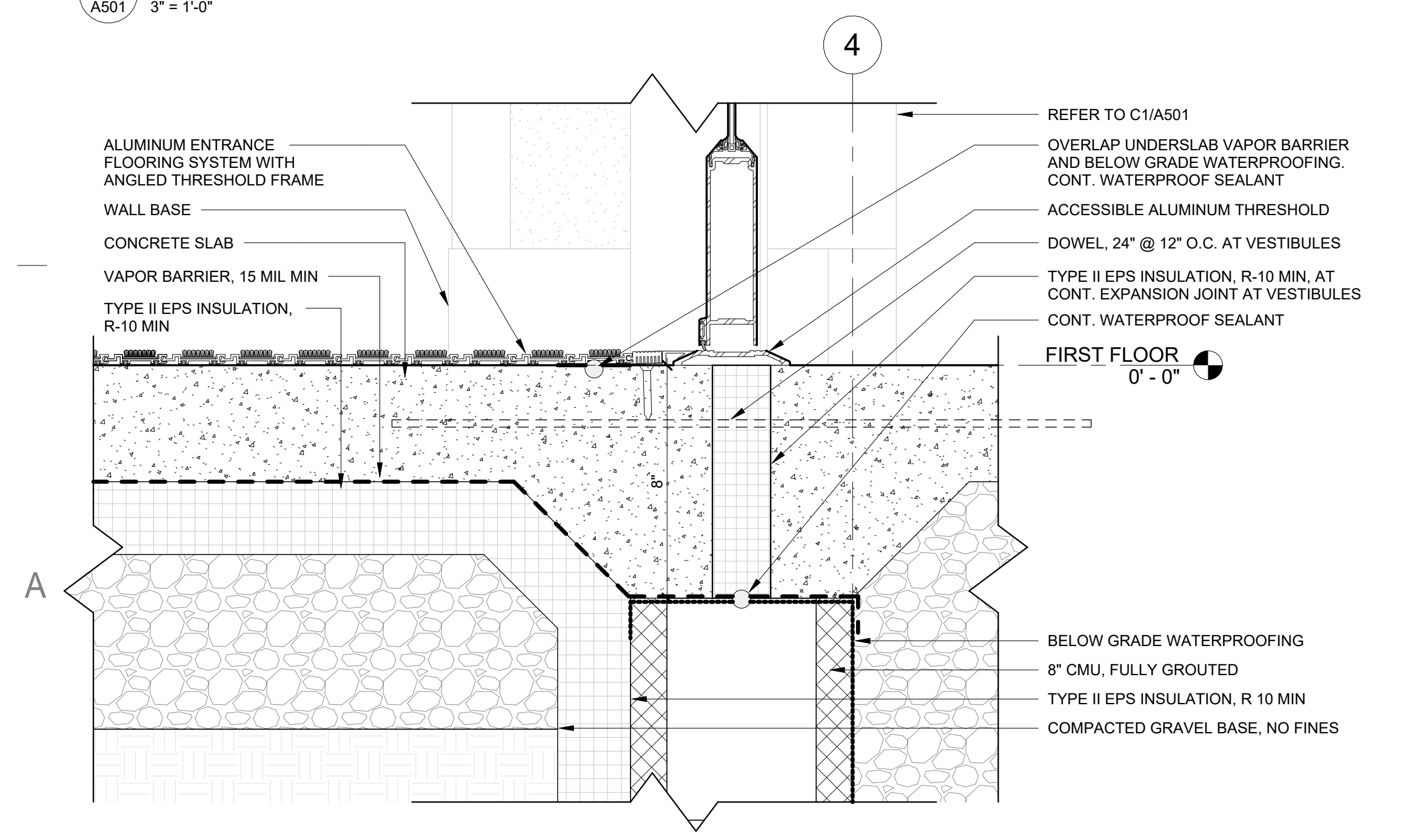
B3
A501
3" = 1'-0"

JAMB DETAIL AT EIFS RETURN



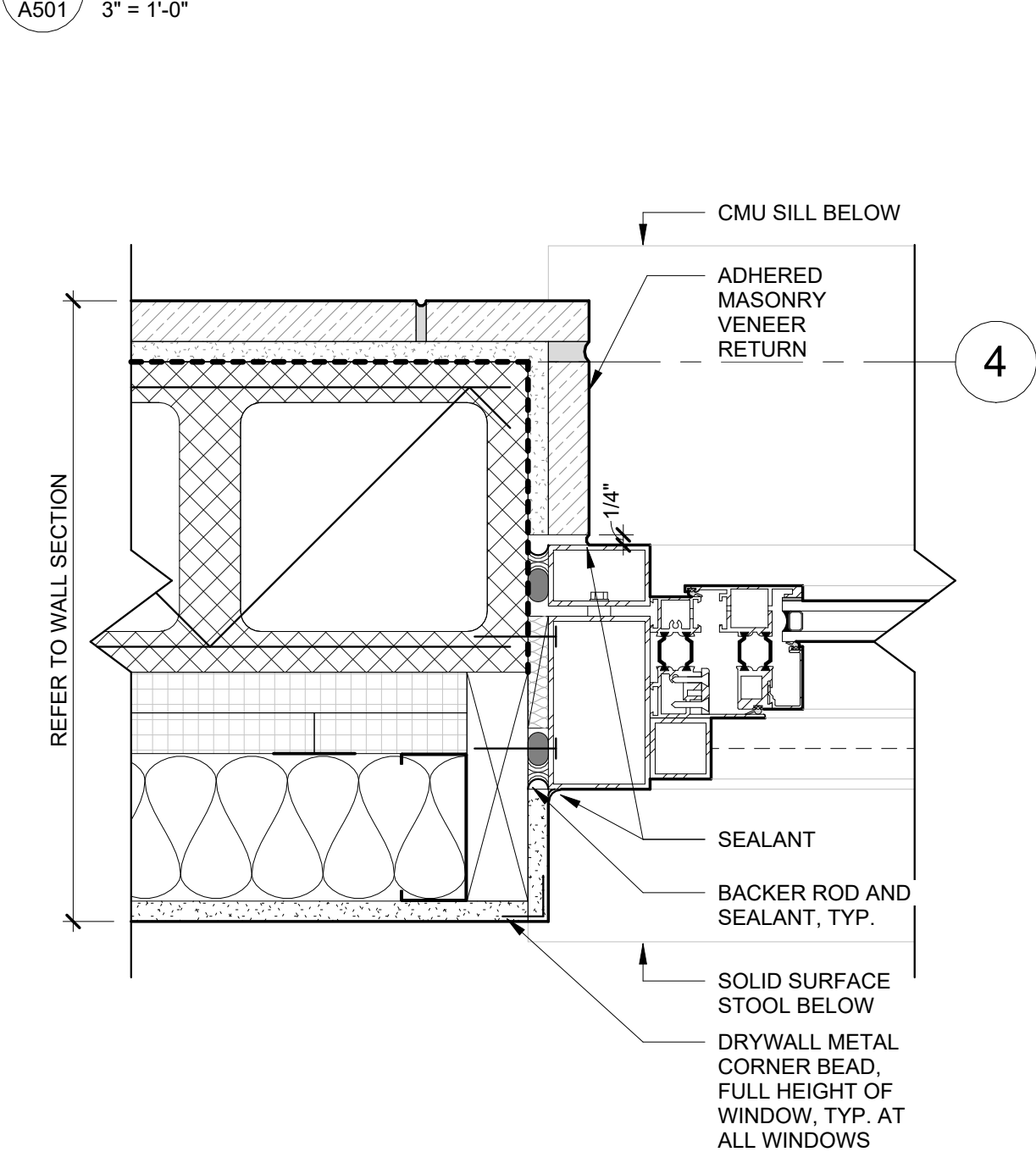
B4
A501
3" = 1'-0"

WINDOW HEAD DETAIL



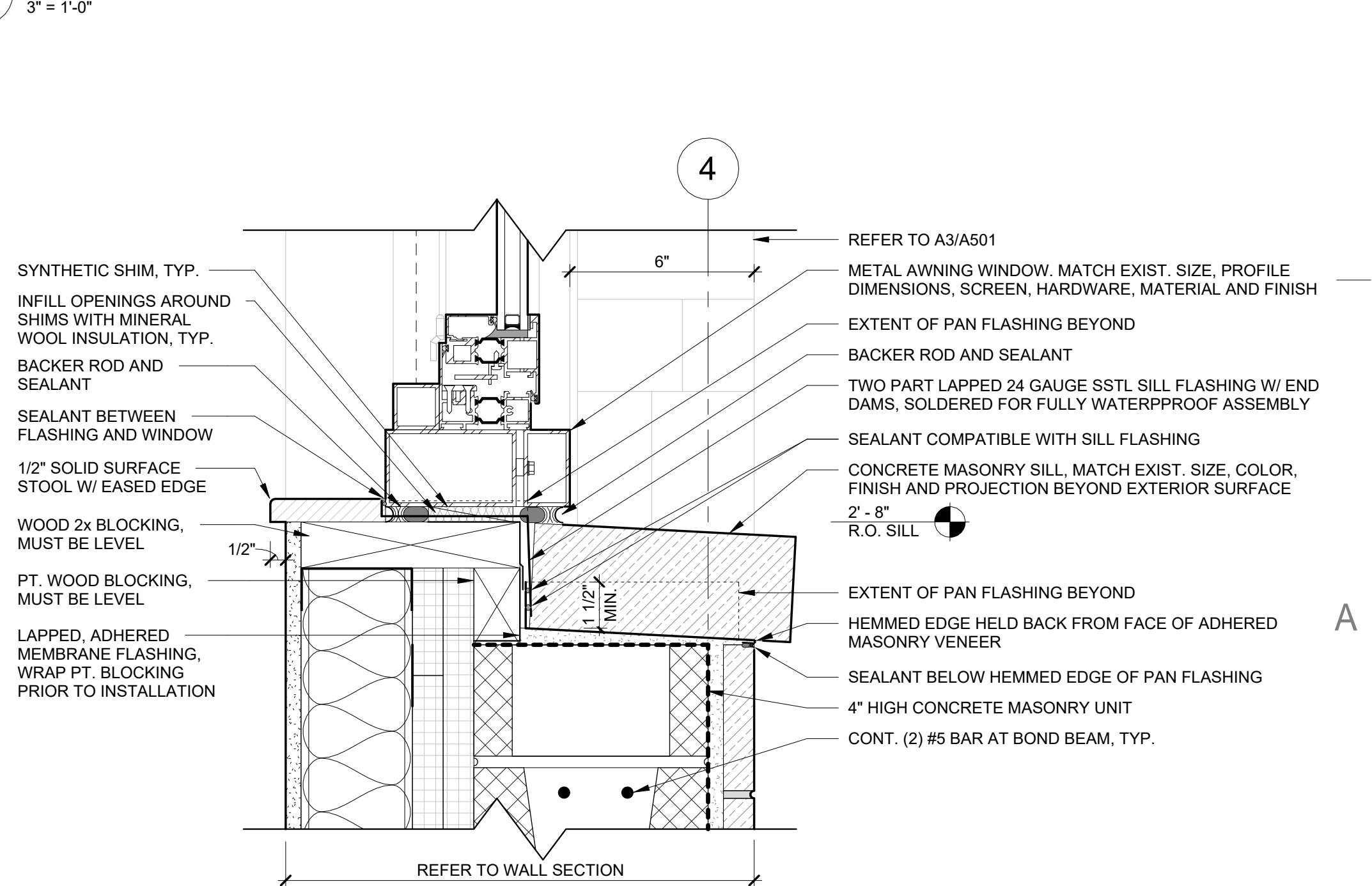
A1
A501
3" = 1'-0"

EXTERIOR DOOR SILL DETAIL



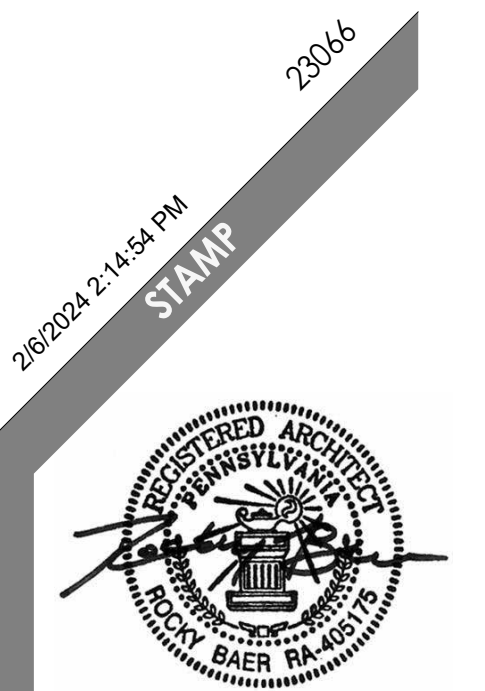
A3
A501
3" = 1'-0"

JAMB DETAIL AT MASONRY VENEER



A4
A501
3" = 1'-0"

WINDOW SILL DETAIL



SBA ARCHITECTS
700 NORTH 4th STREET, SUITE A
SUNBURY, PA 17801

REVISIONS

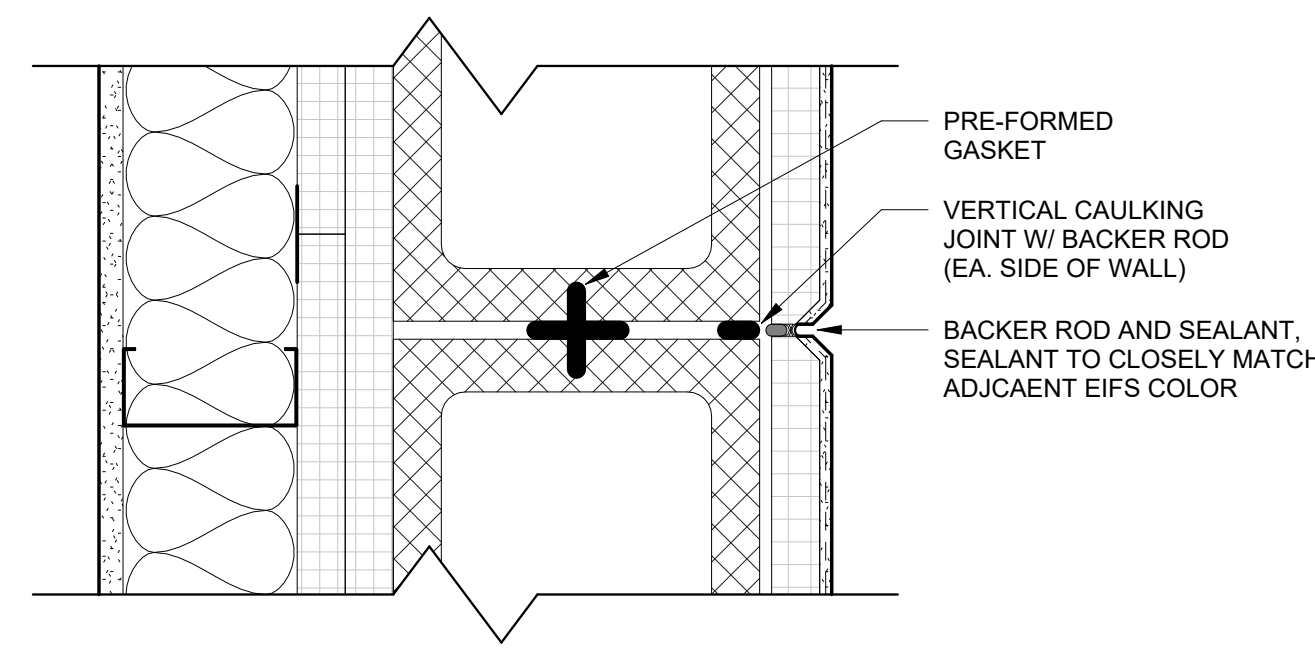
#	Description	Date
1		
2		
3		
4		
5		

ISSUE DATE: 02.06.2024
ISSUE TYPE: CONSTRUCTION DOCUMENTS

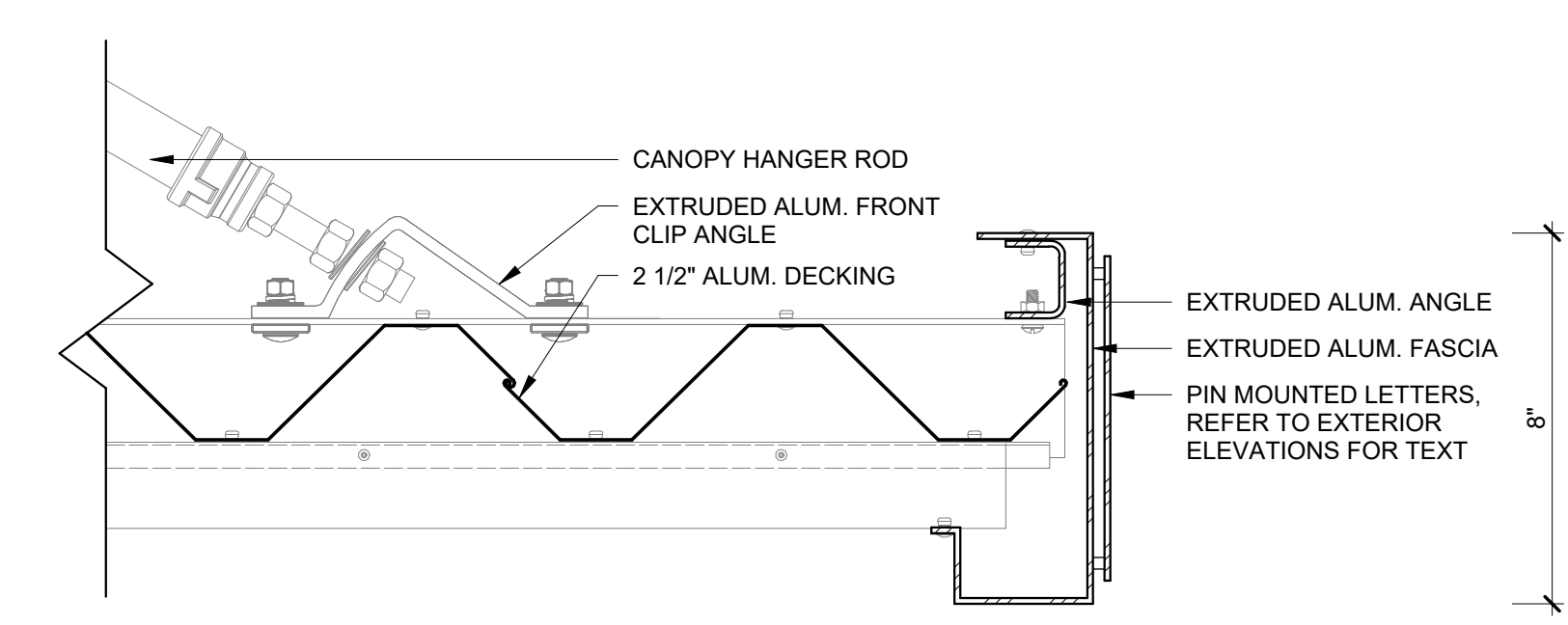
EXTERIOR DETAILS
WASHINGTON TOWNSHIP MUNICIPAL BUILDING ADDITION
CONSTRUCTION DOCUMENTS
185 MANORS ROAD
ELIZABETHVILLE, PA 17023

A501

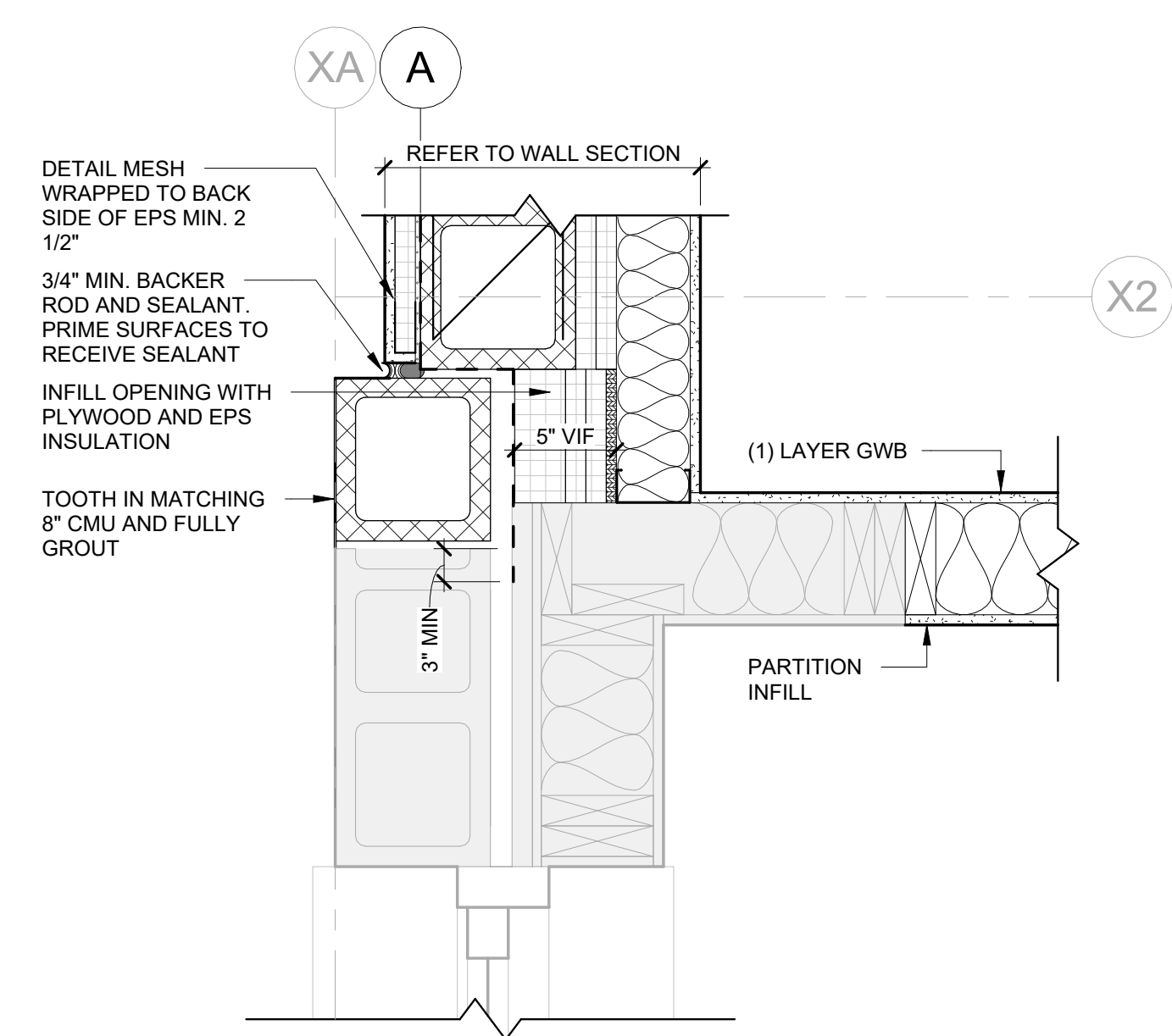
ALL IDEAS, ARRANGEMENTS AND PLANS INDICATED OR REPRESENTED BY THIS DRAWING ARE OWNED BY AND THE PROPERTY OF STROSSER BAER ARCHITECTS AND WERE CREATED, EVOLVED, AND DEVELOPED FOR USE ON AND IN CONNECTION WITH THE SPECIFIED PROJECT. NONE OF THE IDEAS, DESIGNS, ARRANGEMENTS, OR PLANS SHALL BE USED BY OR DISCLOSED TO ANY PERSON, FIRM, OR CORPORATION FOR ANY PURPOSE WHATSOEVER WITHOUT WRITTEN CONSENT OF STROSSER BAER ARCHITECTS. WRITTEN CONSENTS ON THESE DRAWINGS SHALL HAVE PRECEDENCE OVER SCALE DIMENSIONS. CONTRACTORS SHALL VERIFY AND BE RESPONSIBLE FOR ALL DIMENSIONS AND CONDITIONS ON THE JOB AND THIS OFFICE MUST BE NOTIFIED OF ANY VARIATION FROM THE DIMENSIONS AND CONDITIONS SHOWN BY THESE DRAWINGS.



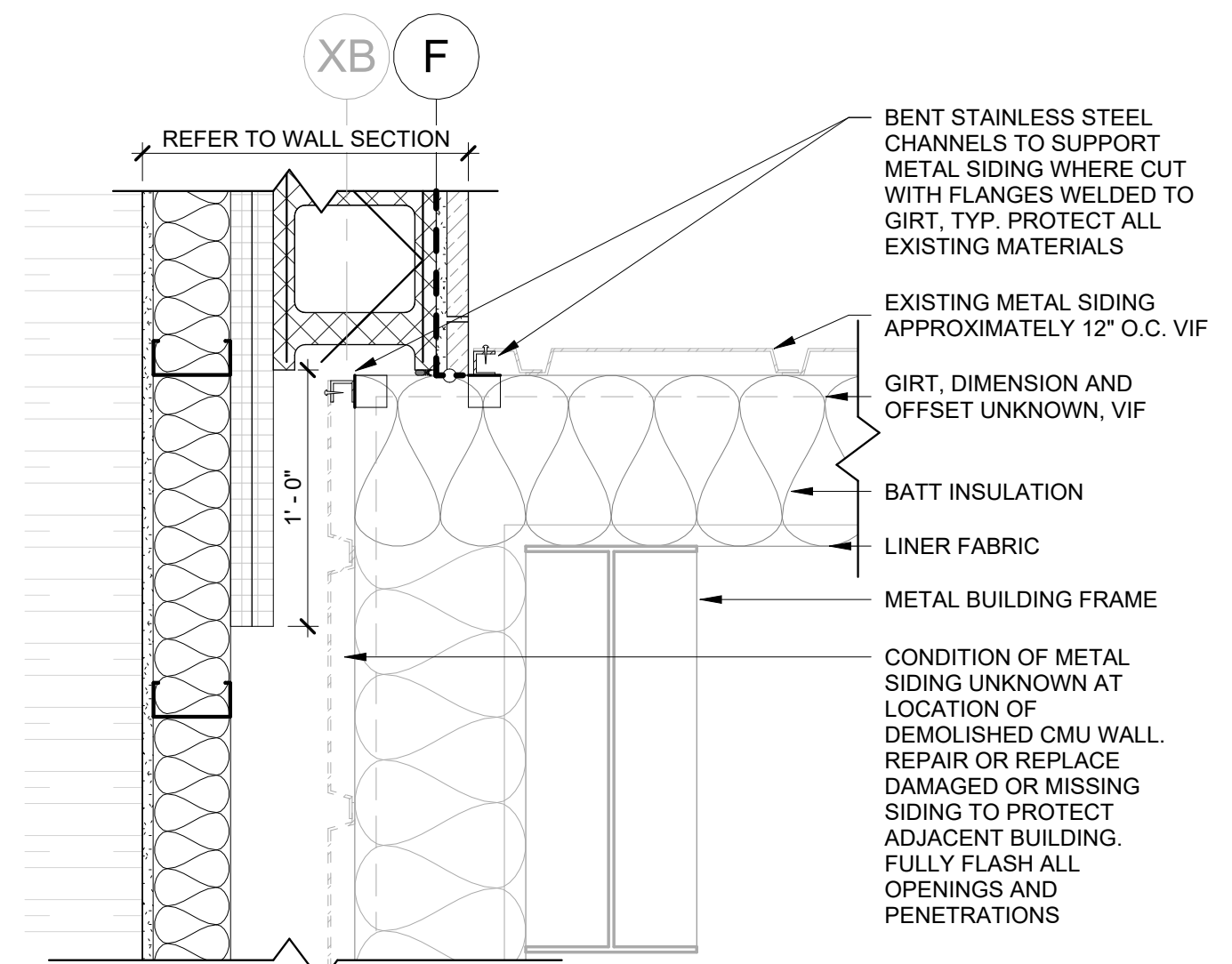
D2 EIFS CONTROL JOINT AT CMU CONTROL JOINT
3' = 1'-0"



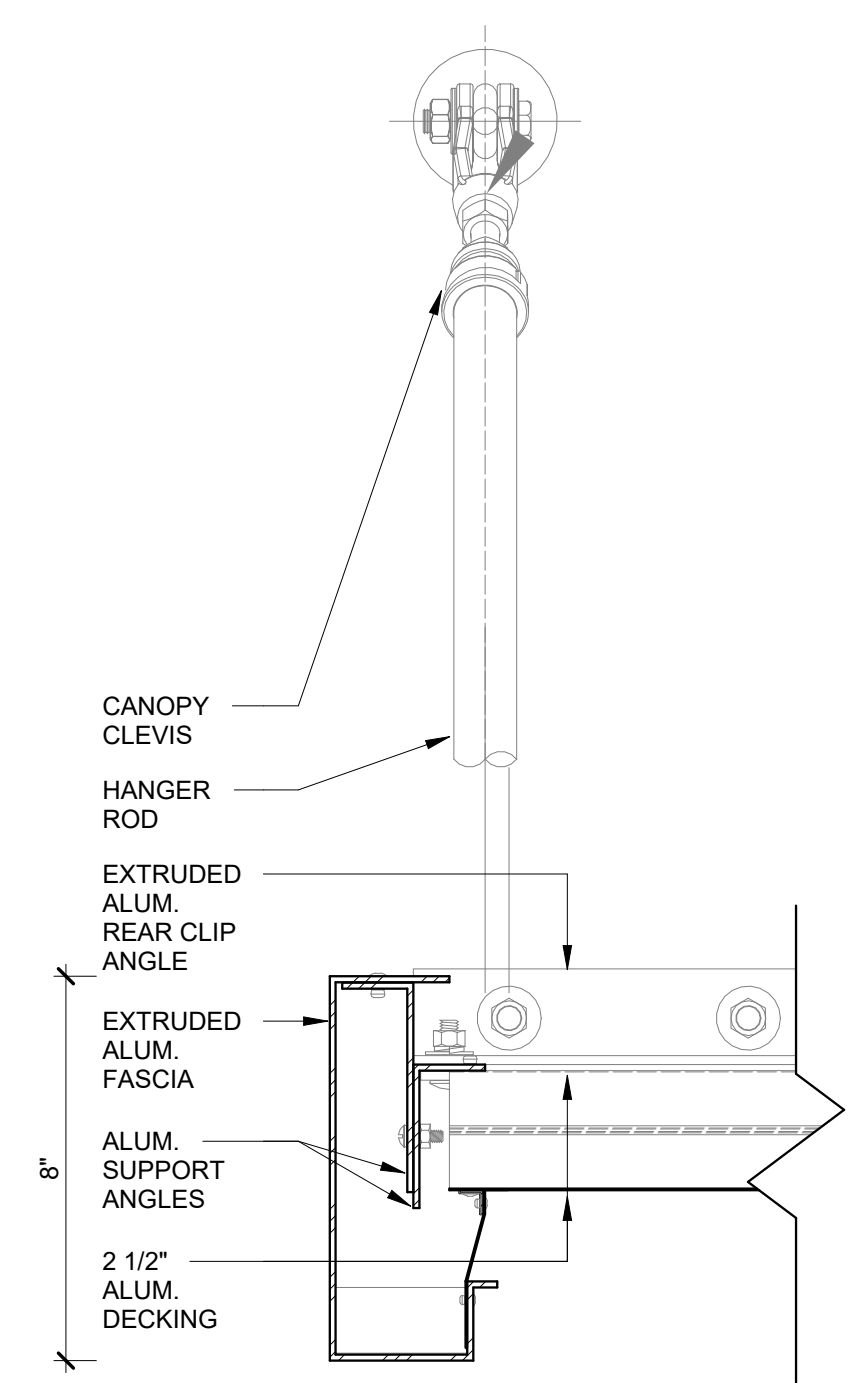
D4 CANOPY DETAIL AT FRONT FASCIA
3' = 1'-0"



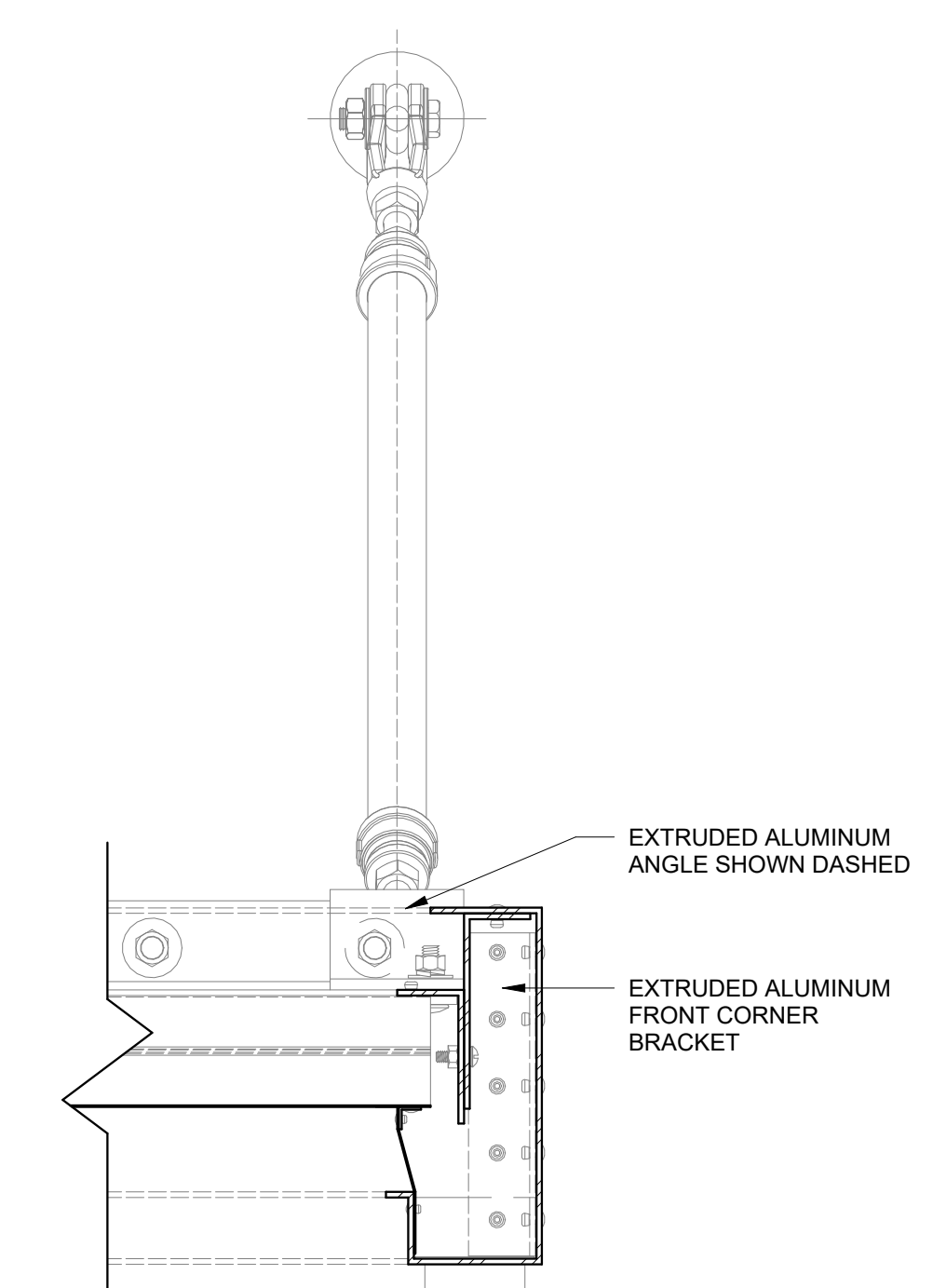
B1 PLAN DETAIL AT NORTHWEST CORNER - HIGH
1 1/2" = 1'-0"



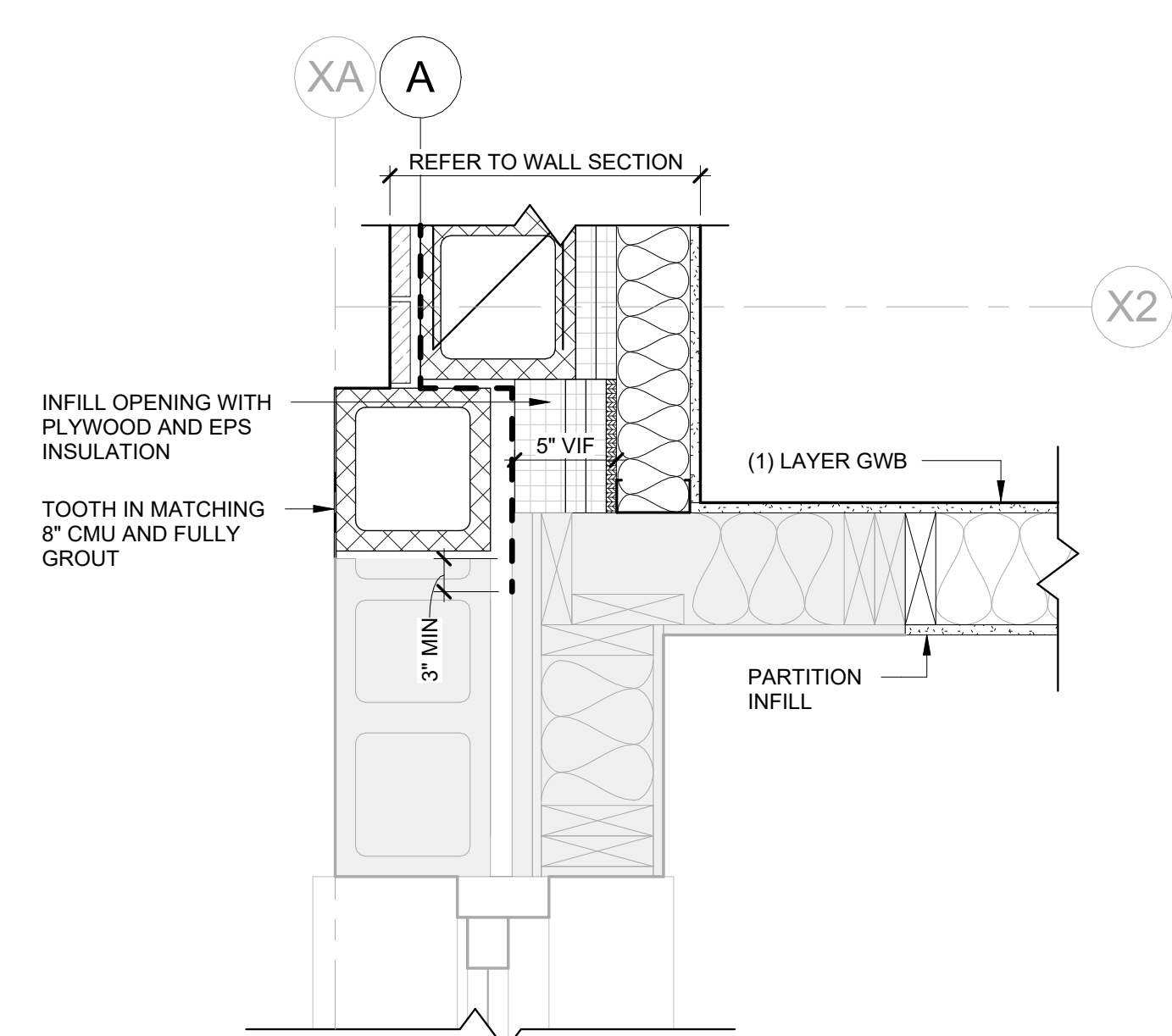
B2 PLAN DETAIL AT NORTHEAST CORNER
1 1/2" = 1'-0"



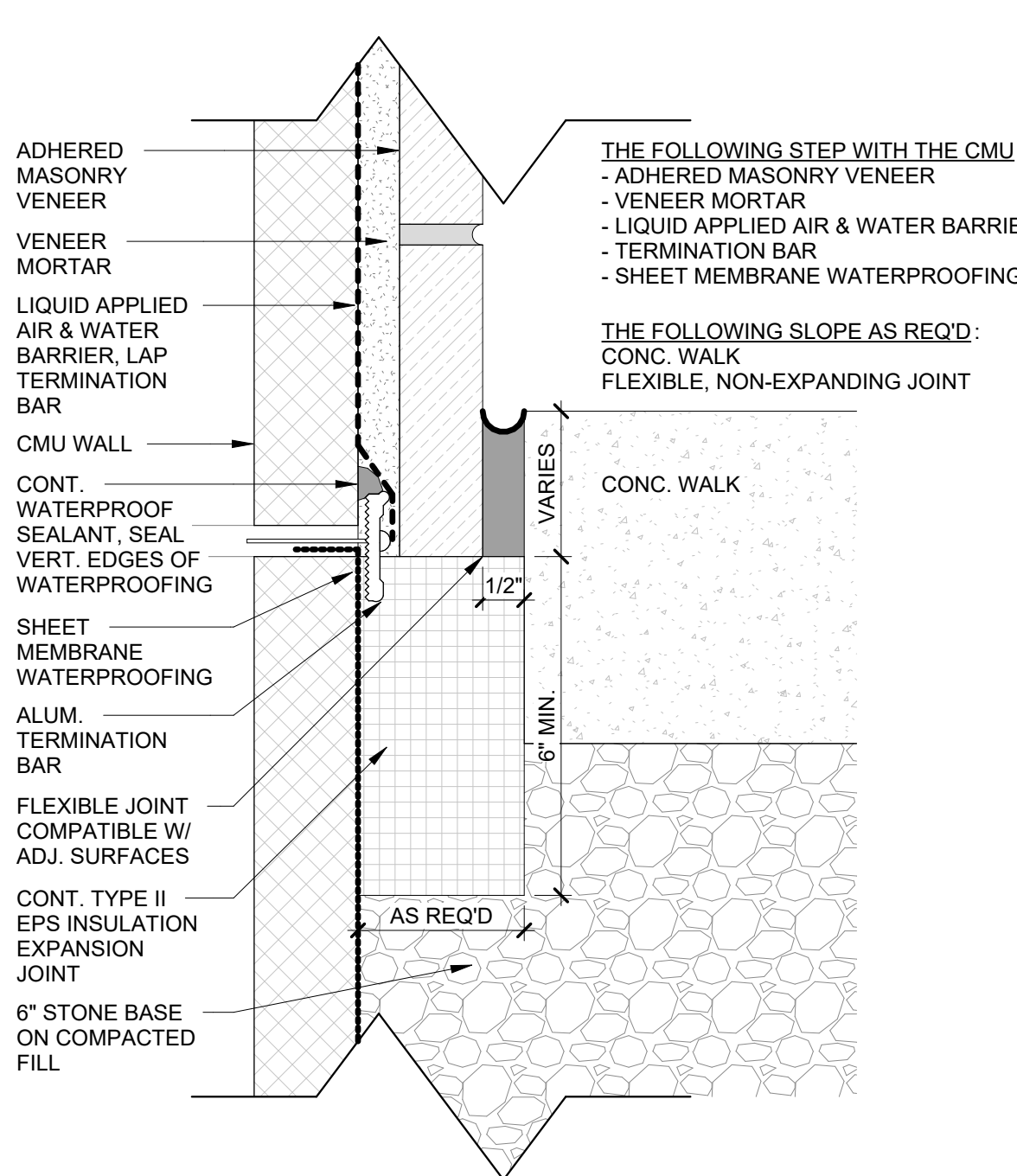
B4 CANOPY AT SIDE FASCIA - DETAIL 1
3' = 1'-0"



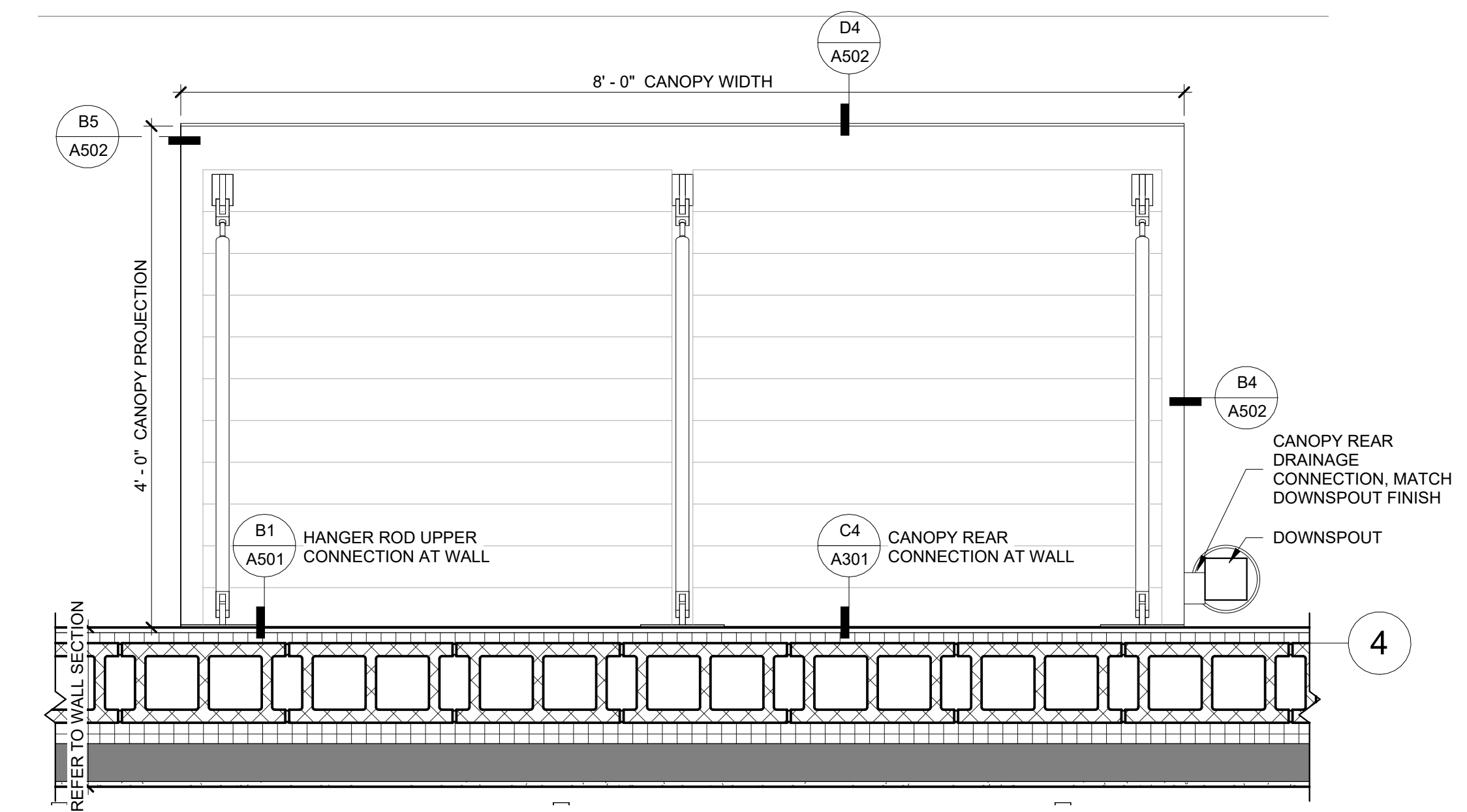
B5 CANOPY AT SIDE FASCIA - DETAIL 2
3' = 1'-0"



A1 PLAN DETAIL AT NORTHWEST CORNER - LOW
1 1/2" = 1'-0"



A2 WATERPROOFING TRANSITION AND CONT. CONC. WALK EXPANSION JOINT
6" = 1'-0"



A4 CANOPY ENLARGED PLAN
1" = 1'-0"

2/6/2024 2:14:55 PM
STAMP



SBA
ARCHITECTS
700 NORTH 4th STREET, SUITE A
SUNBURY, PA 17801

#	Description	Date
1	CONSTRUCTION DOCUMENTS	02.06.2024

EXTERIOR DETAILS
WASHINGTON TOWNSHIP MUNICIPAL BUILDING ADDITION
CONSTRUCTION DOCUMENTS
185 MANORS ROAD
ELIZABETHVILLE, PA 17023

A502

